

:

()

. :

—

—

—



:

:

. :

.....

:

-: . : .1
-: . : .2
-: . : .3

-

!

" "

" "

" "

.

.....:

.....:

/

:

:

.

:

NSW Department of)

.(2008 Health

6

. 2010 8 2009

(90)

%20

(300)

(200)

%30

(

)

(

)

)

(

SPSS

(t-test)

(one way anova)

(3.27)

(3.23)

(%70)

(3.38)

(3.30)

(67.4)

(%72)

(3.39)

.

:

Investigation of the role of the Palestinian Red Crescent Society in realizing health development from the perspective of workers and beneficiaries in the northern West Bank

Abstract

The purpose of this study was to investigate the role of the Palestinian Red Crescent Society in realizing health development from the perspective of workers and beneficiaries in the northern West Bank in the period between June 6, 2009 and August 8, 2010.

The justifications of this study are represented in highlighting the role of institutions in the Palestinian community, or focusing on the most important indicators of health development and knowing the role of NGOs in the conservation of development in Palestine.

The study community was represented in all beneficiaries and workers in the Palestinian Red Crescent Society in the northern West Bank, where the total community of workers was (300) , and a regular sample of (90) employees was randomly selected with a rate of 30% and a sample of beneficiaries was taken with a rate of 20% of the community.

The descriptive method was used and data was analyzed to extract the result, two questionnaire were developed; one for the workers and the other for the beneficiaries and the two questionnaires have enjoyed a degree of validity and reliability. The independent variables of the beneficiaries (age, sex, place of residence, level of living and type of service) and the variables of the workers (sex, educational qualification, career and years of experience) were distributed on a range of areas, namely, (services to contribute to health development , physical therapy services, ambulance and emergency services and services to people with special needs). Information has been collected and the hypotheses were examined and data analyzed using the statistical analysis, (SPSS) program. The percentages, the means and the standard deviations were found, and t-test) for independent samples and test analysis of variance (one way anova) for the indication of differences in the subjects' responses.

The results showed that the role of the Palestinian Red Crescent Society in realizing health development was in a moderate degree and the mean was (3.27) as perceived by the workers and (3.23) as perceived by the beneficiaries , physical therapy services was also in a moderate degree with an a mean of (3.38) as perceived by the workers and (70%) from the viewpoint of beneficiaries, ambulance services and emergency also received a moderate degree with a mean of (3.30) from the viewpoint of workers and (67.4) from the viewpoint of beneficiaries. The services for people with special needs received a mean of (3.39) and moderate degree from the viewpoint of workers and (72%) as seen by the beneficiaries. The study showed no statistically significant differences according to independent variables except for the sex variable of the beneficiaries in the scope of ambulance and emergency and realizing health development and the variable type of services of the beneficiaries in the scope of health development.

In the end, the researcher recommended a range of measures and recommendations to save the health of members of society from the fetal life, childhood and continue to do so in adolescence and adulthood, to strengthen the network of social relations in the family,

school, neighborhood and local community, to strengthen ties with God and commitment to religious teachings, to prevent harmful practices: smoking, drug abuse, alcohol and control of environmental pollution, to provide care and assistance in the Palestinian Red Crescent centers on all levels of health care, to adapt health services so that they can take into account the needs of patients, to train general physicians practitioners on the detection and treatment of psychiatric and physical symptoms which may be different types, and finally to ensure justice and equality in the provision of health services from the Palestinian Red Crescent Societies to the beneficiaries.

1.1

.(2008,Arslan) .

Arslan).

(2008

1994

.(2003)
()

()

:

:

(2002) .

(2009)

1968

()

(2007)

2.1

":

"

3.1

-
-
-

-

-

-
-
-

4.1

-

-

-
-
-

○

5.1

:

•

•

)

(

•

)

(

6.1

:

:

•

•

:

(0.05 = α)

○

(0.05 = α)

○

7.1

:

2000

(2009

-
-
-

1.2

(NGOs):

2.2

Non Governmental Organizations

.(2008,USAID)

(2003).

(2006).

(2006) .

:

.(2007) .

:

•

•

•

()

()

()

•

•

-
-
-
-
-

(2002).

(Committee of .

2006) Foreign Relations

3.2

)

.(2005

(Mazibuko, 2005) .

:

-
-
-
-
-
-

.()

(2002)).

:

•

•

•

•

•

).

(2006

(2008 Global Policy Forum).

(650)

(%8.5)

%56

(1)

:1.2

(UNDP, 2002)

	2000	1990	
%26.0	2733	2169	
%23.8	1839	1485	
%10.3	8467	7675	
%50.0	2036	1357	
%78.5	4215	2361	
%19.5	1170	979	
%0.3	9614	9582	
%42.5	3864	2712	
%32.8	1869	1407	
0.41-	234	244	
%2.7-	1240	1275	
19.3	37281	31246	

5.2

2002

(2006 -) .

:

:

•

:

○

○

○

○

○

○

(2005) .

:

•

.(2007).

.(2004 Oyugi) .

(1999 Asian Development Bank) .

(10)

750

%17

(2002).

(2007) .

:

:

o

.

:

✓

✓

✓

(2005•Dunnigan).

:

o

.(2006)

:

•

(1998).

6.2

7.2

•

•

•

•

(2006).

8.2

: **.1.8.2**

" " (2000)

(200)

(2001)

:

— :

(0.05 = α)

(2001)

"

"

دراسة البلوي (2002)،

:

(100)

•

% 73

•

%76

•

%71

%75

.
%74

) :

•

\.%100

%19

•

•

:

"

(2007)

"

:

:

165

:

.%87.9

"

(2009)

"

.2.8.2

:

(Martin,2002)

()

(2003·Pfeiffer)

"

:

(2004·Vivian)

"

Under developing countries

(2005·Fernando)

(762)

(2007·Duckett)

()

/

:

.9.2

1.3

1968/12/26

1969/9/1

•

•

•

•

•

•

•

•

•

•

-
-
-
-
-

: **.1.1.3**

: **.2.1.3**

:

: **.3.1.3**

:

-

•

•

•

•

•

:

.4.1.3

:

()

•

)

•

(

)

:

•

.(

•

:

.5.1.3

:

:

•

:

•

∴ •

∴ •

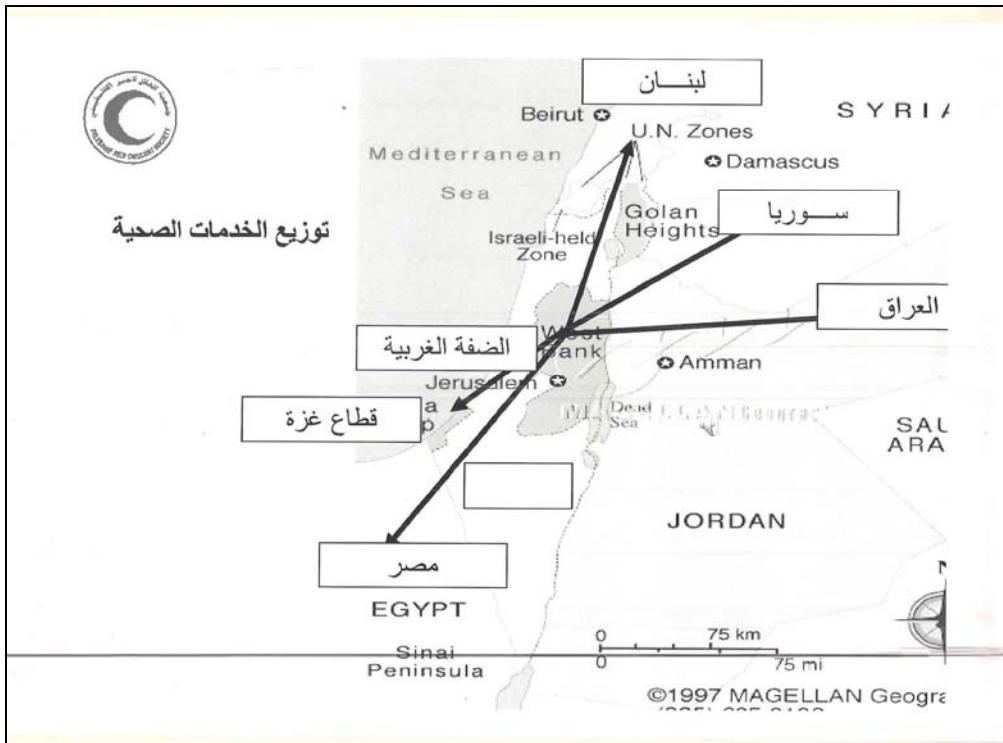
∴ •

∴ •

∴ •

∴

.6.1.3



:1.3

: 1.7.1.3

.

:

.1.1.7.1.3

.

:

.2.1.7.1.3

.

:

.

:

3.1.7.1.3

2006	1800	2008	2005	.2400	
		2467			
		.2008	675	2006	750

2006 221 2005 272
 2008 813 2007
 2005 . 654
 .2008

:

•

.2008

•

•

•

•

•

:1.3

.()

	1272853	2467	2005
750	1226637	2404	2006
	813475	1884	2007
675	653769	1801	2008

:

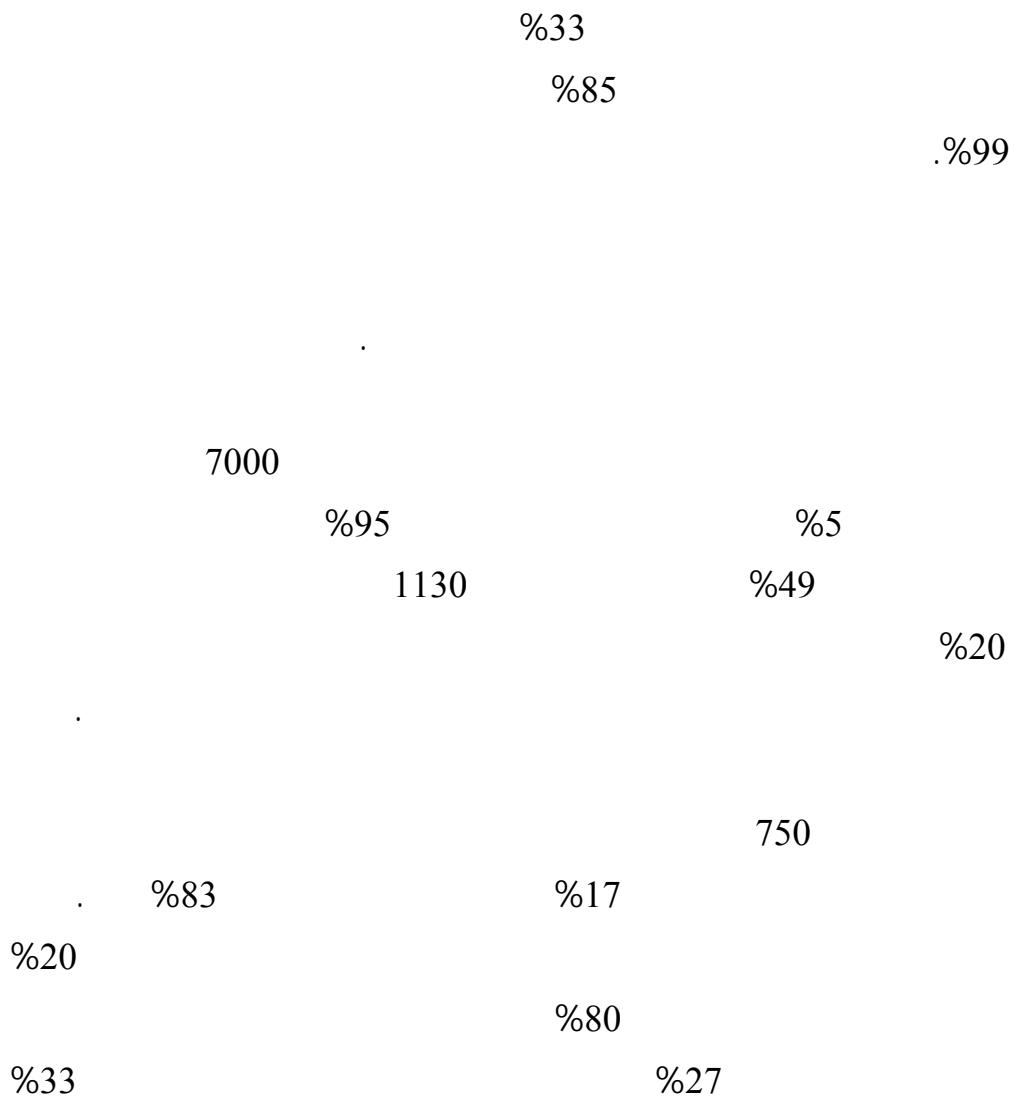
2006 20 14 . 40
2005 1100 2008
7000 2007 2006 1600
2500 2005

:() .4.1.7.1.3

68 2009
15 () :

21 500 27 •
327 •
2200 •
32 . 23

2008

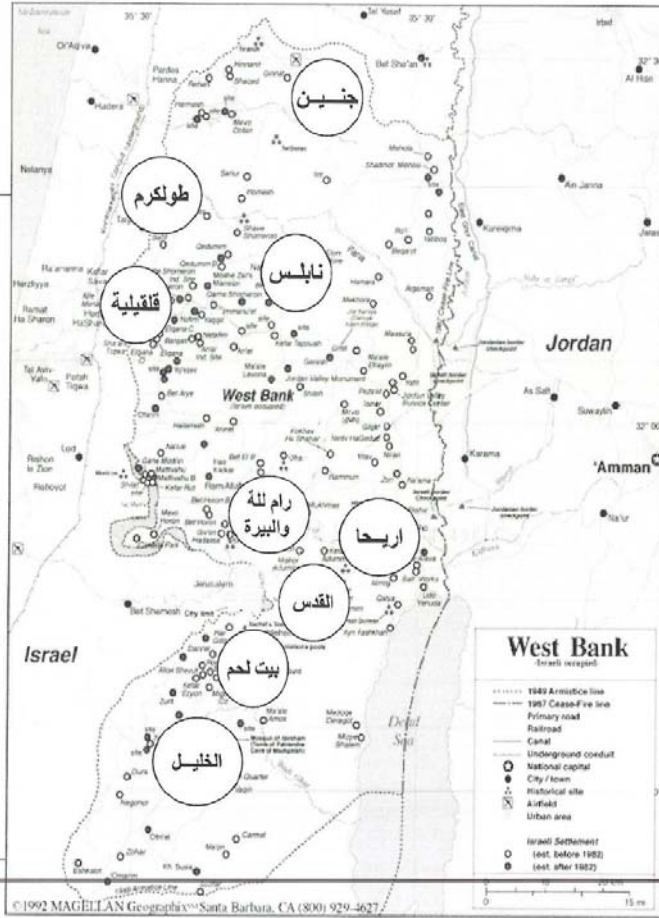


	%44	650	
		%50	
		20332	
		%42	%16
	1256		3540
			%35
2500			
	%31		
.%23		11750	
	2800		
		%11	
6800			
%31			
			%16
44300		68	
15172			23500
	%23		%34
		()
. 2009			
			.(1.2)



توزيع خدمات الإسعاف والطوارئ

الضفة الغربية
المراكز الرئيسية



:2.3

.1.4.1.7.1.3

:

32

9

(1)

500

296

90

30

29

13

33

: 4
 9
 ()
 .(2.3) . 8
 (3.3)

:2.3

5	5	2089	
5	50	4792	
5	5	5838	
5	510	8606	

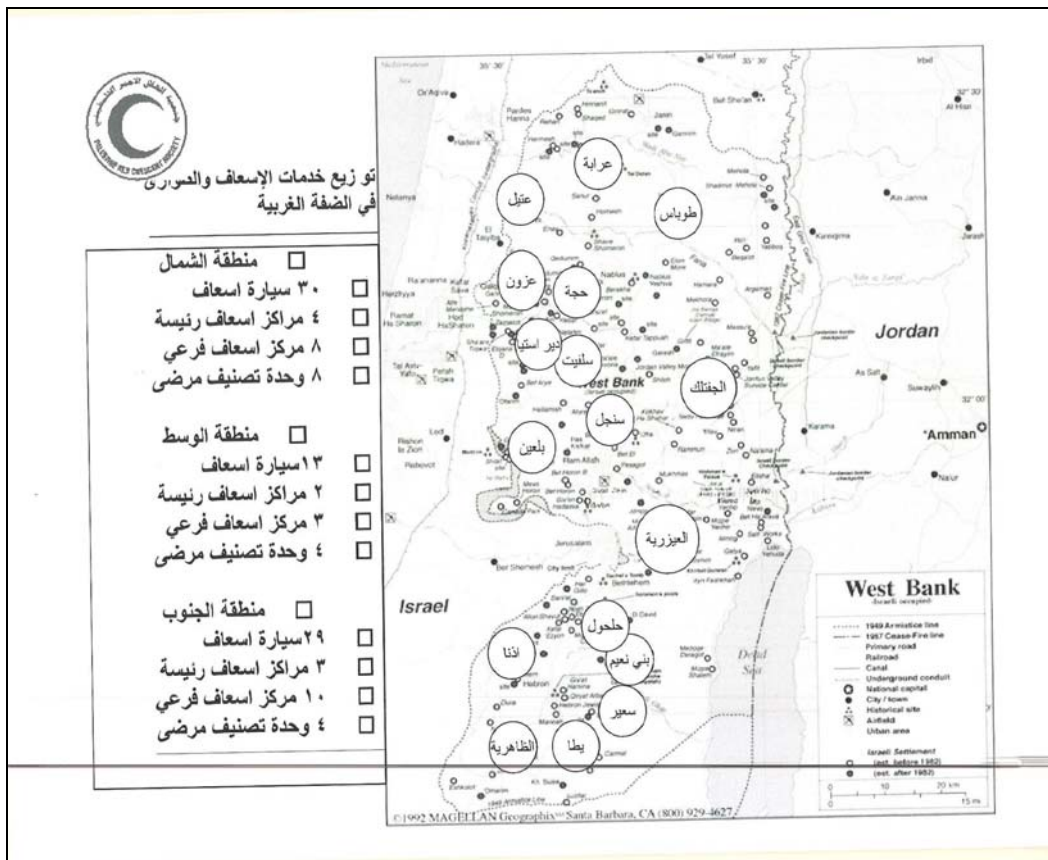
: *

: **.5.1.7.1.3**

14

2009
 600

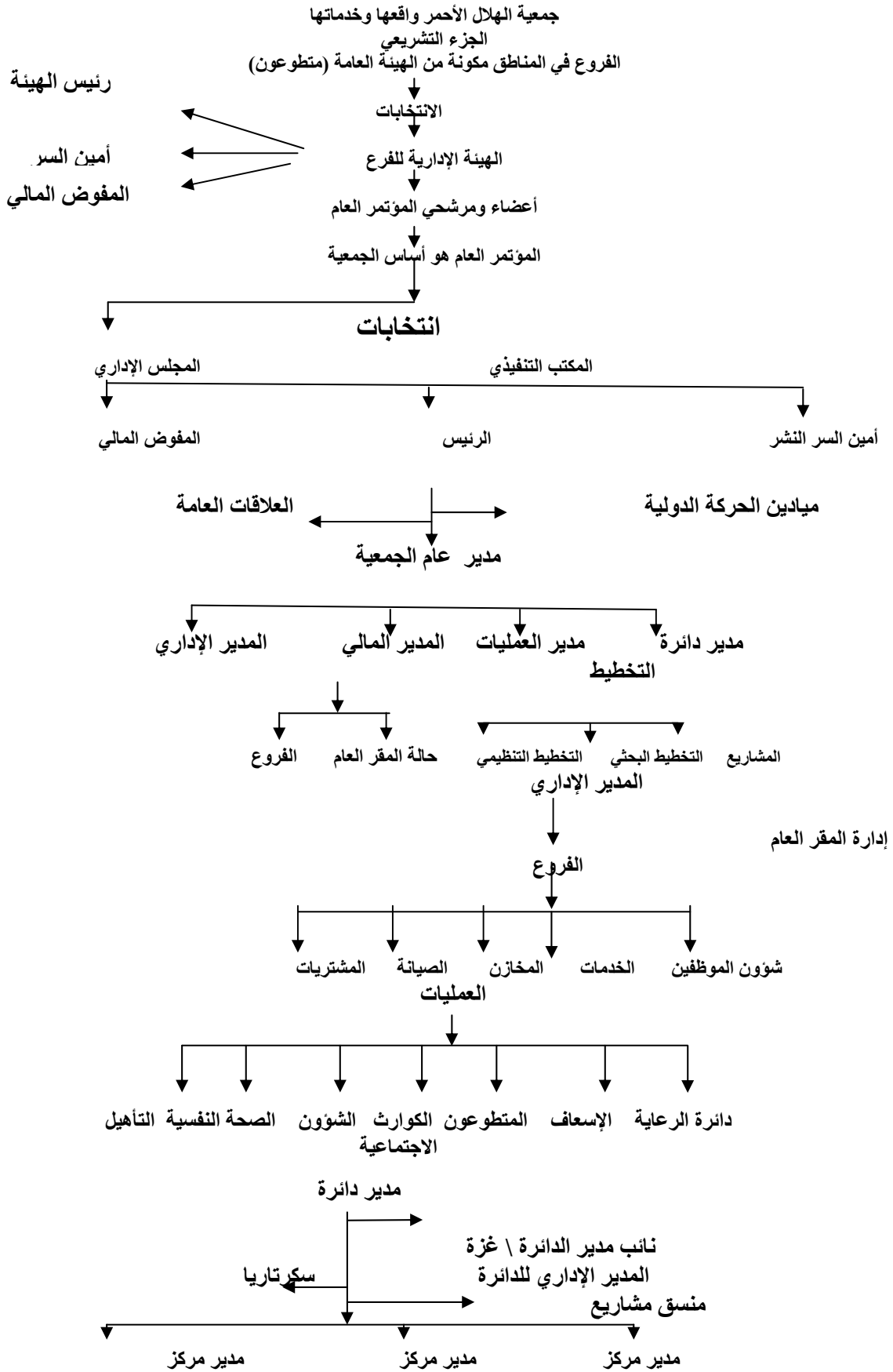
85
 44



:3.3

.6.1.7.1.3

31994
13780
116680
116670
3170
33460
426
56480
29220
26
180
4000
.2009
2930
340
975
312
2648
6800
1340
1300
23





1.4

2.4

3.4

2010 (1750)

2010

(300)

4.4

:

(90)

:

•

(%30)

:

•

()

(200)

(%20)

:

•

:1.4

%61.1	55	
%38.9	35	
%100	90	

%61.1 (1.4)

%38.9

:2.4

%71.1	64	
%16.7	15	
%12.2	11	
%100	90	

%71.1 (2.4)

%16.7

%12.2

:3.4

%22.2	20	
%68.9	62	
%8.9	8	
%100	90	

%22.2 (3.4)

%8.9

%68.9

:4.4

%25.6	23	5
%24.4	22	10-5
%50	45	10
%100	90	

10-5 . 10 %25.6 (4.4) %24.4 5 %50

: 5.4

%4.5	9	30
%20.5	41	40-31
%31	62	50-41
%44	88	50
%100	200	

(%20.5) %4.5 (5.4) 30
 (%31) (40-31)
 50 (50-41)
 .(%44)

:6.4

%64.5	129	
%35.5	71	
%100	200	

%64.5 (6.4)
 %35.5

:7.4

%19	38	
%45.5	91	
%35.5	71	
%100	200	

%19 (7.4)

%35.5

%45.5

:8.4

%5	10	(2500)
%62	124	(2500-1500)
%33	66	(1500-1000)
%100	200	

%5

%33

%62

:9.4

%4.5	9	
%40.5	81	
%55	110	
%100	200	

%4.5

%40.5

%55

5.4

()

)

:

(2004

•

•

•

:

.()

:

•

:

•

:

•

:

○

○

○

○

: **.1.5.4**

(2000)

)

(

:

-
-
-
-

: **.2.5.4**

(2000)

:

(49)

(60)

): - :

.() :

(Cronbach-Alpha) -

(Consistency)

(60)

(15)

(49)

:(%0.82)

(%0.89)

:10.4

%0.89		1
%0.82		2

(0.82)

(0.89)

(10.4)

6.4

:

:

-
-
-
-
-

(Spss)

7.4

:

.1.7.4

:

:

•

• وتشمل المتغيرات المستقلة للمستفيدين: العمر،

.2.7.4

:

:

8.4

(SPSS)

(ANOVA)

(t-test)

$(0.05 \leq \alpha)$

(0.05)

(0.05)

1.5

2.5

" :
"

5 - 4.21) :
(1.80 - 1.00 2.60 - 1.81 3.40 - 2.61 4.20 - 3.41

3-2.1 / 2-1.1 / 1 :

•

: -1.5

	0.87	3.43	.	1
	1.10	3.06	.	2
	0.66	3.58	.	3
	0.87	3.43	.	4
	1.07	2.96	.	5
	1.02	3.31	.	6
	0.73	3.24	.	7
	0.77	3.40	.	8
	0.72	3.45	.	9
	0.83	3.38	.	10
	1.03	3.06	.	11
	0.62	3.44	.	12
	0.72	3.36	.	13
	0.85	3.21	.	14
	0.91	3.28	.	15
	0.80	3.25	.	16
	1.01	2.96	.	17
	0.66	3.41	.	18
	0.85	3.28	.	19

: -1.5

	0.99	2.83	.	20
	1.00	3.23	.	21
	0.77	3.38	.	22
	0.22	3.27		

"

(1.5)

" "

"

"3.45" "3.58"

"

(1.5)

"2.96"

"

"

"

"2.96"

"

"

"

" "

"2.83"

"3.27"

:2.5

	0.74	3.26		1
	6909.	3.28		2
	1.16	2.96		3
	1.10	3.17		4
	0.94	2.85		5
	0.92	3.03		6
	0.73	4.27		7
	0.85	4.38		8
	1.25	3.17		
	0.42	3.38		

(2.5)

"4.38"

(2.85)

"

"2.96"

"3.38"

:3.5

	1.72	2.84		1
	1.58	3.08		2
	1.17	2.84		3
	1.08	3.44		4
	1.38	2.98		5
	1.56	2.68		6
	1.62	3.73		7
	1.38	3.72		8
	1.41	3.71		9
	0.91	4.01		10
	0.71	3.30		

(3.5)

"4.01"

" 3.44"

(3.5)

"..

"2.48"

"

"

"2.84"

"2.98 "

"

"

"

":

2.68

"3.30"

:4.5

	1.39	3.65	.	1
	1.47	3.46	.	2
	1.46	3.61	.	3
	1.56	3.21	.	4
	1.08	4.01	.	5
	1.15	3.26	.	6
	1.44	3.30	.	7
	1.45	2.61	.	8
	0.63	3.39	.	

"

(4.5)

"

"(4.01)

"3.65"

" "

"

"

"2.61"

"

"

"3.21"

"3.39"

•

: -5.5

	67.67	0.84	2.03		1
	65.17	0.60	1.95		2
	62.50	0.65	1.87		3
	80.50	0.65	2.41		4
	70.83	0.64	2.12		5
	79.17	0.74	2.37		6
	74.00	0.80	2.22		7
	85.00	0.59	2.55		8
	51.50	0.70	1.54		9
	62.33	0.77	1.87		10

: -5.5

	77.83	6746.	2.33		11
	88.83	0.54	2.66		12
	86.50	0.51	2.59		13
	86.67	0.57	2.60		14
	74.17	0.62	2.22		15
	62.17	0.85	1.86		16
	85.33	0.49	2.56		17
	80.17	0.74	2.40		18
	74.4	0.19	2.23		

"

(5.5)

"2.03"

"

"

"

"1.95"

"1.87"

"

"

"

"

"

"2.41

"

"

"2.12 "

"

"

"2.37

"

"

"2.22"

"2.55"

"

"

"

"

"1.54

"

"

"1.87"

.

"

"

"2.23"

.

"

"

(5.5)

"2.66 "

.

.

"

"

"2.59"

.

"

"

"2.60"

.

.

"

"

"2.22"

.

.

"

"

"1.86"

.

"

"

"2.56"

.

"

(5.5)

"2.40"

"

: -6.5

	51.17	0.70	1.53		1
	70.67	0.73	2.12		2
	55.17	0.69	1.65		3

: -6.5

	65.67	0.71	1.97	.	4
	67.17	0.69	2.01		5
	86.67	0.57	2.60	.	6
	81.50	0.74	2.44	.	7
	80.17	0.70	2.40	.	8
	75.67	0.64	2.27	.	9
	66.67	0.80	2.00		10
	70.0	0.30	2.10		

"

(6.5)

"

"1.53"

.

"

"2.12"

"

"

"

"1.65"

"

"1.97"

"

.

.

.

"

"2.01 "

"

"

"

"2.60

.

.

"

"

"2.44"

.

"

"

"2.40"

"

"2.27 "

"

.

"2.00"

"2.10"

:7.5

	84.83	0.70	2.54		1
	55.50	0.77	1.66		2
	78.33	0.83	2.35		3
	47.17	0.63	1.41		4
	58.67	0.78	1.76		5
	51.33	0.75	1.54		6
	78.50	0.72	2.35		7
	84.83	0.63	2.54		8
	67.4	0.25	2.02		

"

"

(7.5)

"2.54"

"

"

"1.66"

"

"

"2.35"

"

"

"1.41"

"

"

"1.76 "

"

"

"1.54

"2.35"

"

"

"2.54 "

"

"2.02"

:8.5

	75.50	0.76	2.26		1
	66.00	0.66	1.98		2
	67.17	0.71	2.01		3
	64.67	0.70	1.94		4
	76.50	0.66	2.29		
	78.83	0.62	2.36		
	76.33	0.61	2.29		
	75.33	0.79	2.26		
	70.00	0.86	2.10		
	72.2	0.29	2.16		

"

"

(8.5)

"2.26"

"

"

"1.98"

"

"

"2.01"

"1.94"

"

"

"2.29 "

"

"

"

"

"2.26"

"2.29"

"2.26 "

"2.10

3.49 -2.5 2.49 -1.50) :

(5 -3.5

: -9.5

:

	65.10	1.21	3.25		1
	56.70	1.36	2.83		2
	79.01	0.57	3.95		3
	66.00	0.88	3.30		4
	76.20	1.12	3.81		5

: -9.5

:

	73.80	1.01	3.69		6
	67.60	0.95	3.38		7
	63.59	0.68	3.17		8
	68.90	0.74	3.44		9
	68.70	0.83	3.43		10
	75.50	0.68	3.77		11
	65.10	1.21	3.25		12
	56.70	1.36	2.83		13
	79.01	0.57	3.95		14
	65.10	1.21	3.25		15
	68.4	0.37	3.42		

"

(9.5)

"3.25"

"

"

"2.83"

"

"

"

"3.95"

"

"3.30 "

"

"

"

"3.81 "

"

"

"3.69

"3.38"

"

"

"

"

"3.17"

.

"

"

"3.44

.

.

"

"

"3.43"

.

.

"

"3.77"

"

.

.

"

"3.25 "

"

.

"
"2.83"
"

"
"3.95"
"

"
"3.25"
"

"3.42

3.5

)
"
(0.05= α)
.(

T-

:

"test

:

(t-test)

:10.5

		" "				
0.003	88	3.04	0.18	3.32		
			0.25	3.18		
0.74	88	0.32	0.42	3.36		
			0.42	3.40		
0.14	88	1.45	0.70	3.39		
			0.71	3.17		
0.38	88	0.87	0.66	3.43		
			0.60	3.31		
0.14	88	1.46	0.35	3.38		
			0.36	3.26		

(10.5)

(0.05=α)

(0.003)

"0.74"

(0.05= α)

(0.14)

(0.05= α)

"0.38"

(0.05= α)

"0.14"

"ANOVA"

(0.05= α)

.(0.48)

"0.21"

(ANOVA)

:11.5

	F							
0.48	0.73	0.50	87	4.42	0.37	2	0.745	
0.21	1.56	0.17	87	15.47	0.27	2	0.55	
0.61	0.48	0.51	87	44.72	0.25	2	0.50	
0.43	0.83	0.41	87	35.72	0.34	2	0.68	
0.38	0.95	0.13	87	11.44	0.12	2	0.25	

(0.05= α)

(0.61)

(0.05= α)

"0.43"

(0.05= α)

"0.38"

"Anova"

(ANOVA)

:12.5

	F							
0.58	0.54	0.51	87	4.44	0.27	2	0.55	
0.94	0.05	0.18	87	16.00	0.10	2	0.12	
0.28	1.28	0.50	87	43.93	0.64	2	1.29	
0.16	1.83	0.40	87	34.93	0.73	2	1.47	
0.35	1.05	0.13	87	11.41	0.13	2	0.27	

(0.05= α)

(0.58)

("0.94")

(0.05= α)

(0.28)

(0.05= α)

"0.16"

(0.05= α)

"0.35"

"ANOVA"

(ANOVA)

:13.5

	F							
0.26	1.33	0.50	87	4.36	0.67	2	0.13	
0.84	0.17	0.18	87	15.96	0.31	2	0.62	
0.15	3.00	0.48	87	42.30	1.45	2	2.91	
0.07	2.68	0.39	87	34.29	1.05	2	2.11	
0.08	2.56	0.12	87	11.04	0.32	2	0.65	

"

(0.05= α)

(0.26)

"0.84"

(0.05= α)

(0.15)

(0.05= α)

"0.07"

(0.05= α)

"0.08"

" (0.05= α)

)

(

:

"Anova"

:

" (14.5)

(0.05= α)

(Anova)

:14.5

	F							
0.64	0.55	0.36	196	7.15	0.20	3	0.60	
0.23	2.98	0.87	196	17.14	0.26	3	0.78	
0.25	1.36	0.64	196	12.65	0.88	3	0.26	
0.11	2.03	0.87	196	17.12	0.17	3	0.53	
0.83	0.28	0.14	196	27.87	0.40	3	0.12	

(0.64)

"0.23"

(0.05= α)

(0.25)

(0.05= α)

"0.11"

(0.05= α)

"0.83"

T-

:

"test •

:

" (15.5)

(0.05= α)

(0.003)

"0.02"

(t-test)

:15.5

		" "				
0.03	198	2.17	0.19	2.25		
			0.17	2.19		
0.02	198	2.23	0.30	2.06		
			0.27	2.16		
0.79	198	0.25	0.25	2.01		
			0.25	2.02		
0.04	198	2.06	0.30	2.19		
			0.27	2.10		
0.60	198	0.52	0.37	3.43		
			0.37	3.40		

(0.05= α)

(0.79)

(0.05= α)

"0.04"

(0.05= α)

"0.60"

:

"ANOVA"

:

(ANOVA)

: -16.5

	F							
0.63	0.45	0.36	197	7.18	0.16	2	0.33	
0.15	1.89	0.89	197	17.59	0.16	2	0.33	
0.15	1.90	0.64	197	12.67	0.12	2	0.24	
0.64	0.44	0.89	197	17.57	0.39	2	0.79	
0.13	3.42	0.13	197	27.05	0.47	2	0.94	

"

(0.05= α)

(0.63)

"0.15"

(0.05= α)

(0.15)

(0.05= α)

."0.64"

(0.05= α)

."0.13"

:

"Anova"

:

(ANOVA)

:17.5

	F							
0.31	0.92	0.34	197	6.80	0.20	2	0.40	
0.42	0.85	0.90	197	17.77	0.77	2	0.15	
0.76	0.11	0.62	197	12.28	0.31	2	0.63	
0.43	0.17	0.86	197	17.10	0.27	2	0.55	
0.13	0.55	0.13	197	27.02	0.48	2	0.97	

"

(0.05= α)

(0.31)

"0.42"

(0.05= α)

(0.76)

(0.05= α)

."0.43"

(0.05= α)

."0.13"

"ANOVA"

" (18.5)
(0.05= α)

.(0.15)

"0.23"

(ANOVA)

:18.5

	F							
0.15	1.909	0.35	197	7.07	0.68	2	0.13	
0.23	14.621	0.79	197	15.61	1.15	2	2.31	
0.55	0.592	0.65	197	12.84	0.38	2	0.77	
0.46	0.778	0.88	197	17.51	0.69	2	0.13	
0.30	3.494	0.13	197	27.03	0.48	2	0.95	

(0.05= α)

(0.55)

(0.05= α)

"0.46"

(0.05= α)

"0.3"

: (19.5)

(Scheffe)

:19.5

(3.477)	(3.33)	(3.511)	
0.0333	0.171	----	(3.511)
-0.1378*	----	----	(3.333)
----	----	----	(3.477)



1.6

•

•

(0.05= α)

•

(0.05= α)

•

(0.05= α)

•

$(0.05=\alpha)$

"

•

$(0.05=\alpha)$

•

$(0.05=\alpha)$

"

•

2.6

:

•

•

•

•

•

•

•

•

•

•

•

3.6

•

•

•

:

- . (2006) •
- . (2001) •
- . ()
- . (2005) •
- . (2006) •
- . (2007) •
- . (2006) •
- . (2000) •
- . (2002) •
- . (2006) •
- . (2006) •
- . **1999** •
- . (2006) •
- . (2006) •

.2000 •

.(1998) •

.(2000) •

.(2009) •

.(2002). •

.(2001) •

.104-47

.(2002) •

.(2003) •

.(2005) •

:(1976) •

.(2007) •

.(2002) •

.(2009) •

:(1987) •

- **Martin G (2002). A comparative Analysis of the Financing of HIV/AIDS Programmes in Tanzania and Uganda Human Sciences Research Council, South Africa.**

- Arslan, Hakan (2008). **The Role Of Ngo's in the context Of Post Disaster Housing in Turkey**. Istanbul Technical University.
- Asian Development Bank (1999). **Special Evaluation Study of the Role of Non Government Organizations and Community Based Organizations**. Asian Development Bank
- Committee on Foreign Relations (2006). **The Role of Non-Governmental Organizations in the Development of Democracy**. United States Senate. Washington.
- Duckett, J., (2007). **NGOs and Health Policy in China**. BICC Launch Conference Academic Workshop Development, the Environment and Public Health Panel. University of Oxford
- Dunnigan, J., (2005). **The NGO Problem**. Dirty Little Secrets Discussion Board. Strategy World.
- Fernando, A., (2005). **Doing Good and Being Good: Development NGO Governance in the Philippines**. Philippine Institute for Development Studies.
- Global Policy Forum (2008). **Why We Need to Look Hard at the NGOs' Flaws**. Global Policy Forum. New York.
- Mazibuko, N., (2005). **Role of NGOs in Social Welfare in South Africa: Are We Winning?**. The 6th Forum General Assembly. ESKOM Conference Center. Maryland.
- New South Wales (2008). Health Care Advisory Council (HCAC) Newsletter. Department of Health. Australia.
- Oyugi, W., (2004). The Role of NGOs in Fostering Development & Good Governance at the Local Level in Africa with a Focus on Kenya. **Africa Development**. Vol (16). No.4. pp 19-54.
- Pfeiffer, J., (2003). International NGOs and primary health care in Mozambique: the need for a new model of collaboration. **Social Science & Medicine**. Vol 56. pp 725–738.
- UNDP (2002). **Human Development Report**. Oxford University Press.
- USAID, (2008). **2007 NGO Sustainability Index for Central and Eastern Europe and Eurasia**. Counterpart International Turkmenistan.
- Vivian, J., (2004). **NGOs and sustainable development in Zimbabwe: no magic bullets**. Development and Change. UNRISD, Geneva.

ملحق 1.4: استبانة المستفيدين

:

:

(x) :

.....			<input type="checkbox"/>	1
	(2)	(1)	<input type="checkbox"/>	2
(3)	(2)	(1)	<input type="checkbox"/>	3
(3)	(2)	(1)	<input type="checkbox"/>	4
(3)	(2)	(1)	<input type="checkbox"/>	5

: (v) :

				1
				2
				3
				4
				5
				6
				7
				8
				9
				10
				11
				12
				13
				14
				15
				16
				17
				18

: .2

				1
				2
				3
				4
				5
				6

				7
				8
				9
				10

.3

				1
				2
				3
				4
				5
				6
				7
				8

.4

				1
				2
				3
				4
				5
				6
				7
				8
				9

						1
						2
						3
						4
						5
						6
						7
						8
						9
						10
						11
						12
						13
						14
						15

:

..... .1

..... .2

..... .3

..... .4

:

..... .1

..... .2

..... .3

..... .4

:2.4

:

.

.



:

: (x)

		(2		(1	<input type="checkbox"/>	:	1
	(3		(2	(1	<input type="checkbox"/>		2
	(3		(2	(1	<input type="checkbox"/>		3
(3		10	5 (2	5	(1	<input type="checkbox"/>	4
				10			

:

:

						1
						2
						3
						4
						5
						6
						7
						8
						9
						10
						11
						12
						13
						14
						15
						16
						17
						18

						19
						20
						21
						22

: .2

						1
						2
						3
						4
						5
						6
						7
						8
						9

: .3

						1
						2
						3
						4
						5
						6
						7
						8
						9
						10

: : .4

						1
						2
						3
						4

						5
						6
						7
						8

:

..... .1

..... .2

..... .3

..... .4

:

..... .1

..... .2

..... .3

..... .4

93	1.4
97	2.4

27	1.3
33		2.3
35	3.3

12	1.2
29 ()	1.3
34	2.3
39	1.4
40	2.4
40	3.4
40	4.4
41	5.4
41	6.4
42	7.4
42	8.4
42	9.4
45 -	10.4
48	1.5
50	2.5
52	3.5
54		4.5

55		5.5
59	...		6.5
62		7.5
64		8.5
66	..		9.5
71	(t-test)	10.5
73	(ANOVA)	11.5
74	(ANOVA)	12.5
76	(ANOVA)	13.5
78	(Anova)	14.5
80	(t-test)	15.5
81	(ANOVA)	16.5
83	(ANOVA)	17.5
85	(ANOVA)	18.5
86	(Scheffe)	19.5

.....

	
	
	
	
	
1	:
1	1.1
3	2.1
3	3.1
4	4.1
5	5.1
5	6.1
6	7.1
7	:
7	1.2
7 (NGOs):	2.2
9	3.2
11	4.2
12	5.2
16	6.2
16	7.2

17	8.2
17	1.8.2
20	2.8.2
21	9.2
22 :	
22	1.3
242.1.3
24	..	.3.1.3
254.1.3
255.1.3
		.6.1.3
26	
27		.7.1.3
271.7.1.3
281.1.7.1.3
282.1.7.1.3
		3.1.7.1.3
28	
30 ()	.4.1.7.1.3
33	1.4.1.7.1.3
		.
345.1.7.1.3
356.1.7.1.3
38 :	
38	1.4
38	2.4

39	3.4
39	4.4
43	5.4
441.5.4
442.5.4
45	6.4
46	7.4
461.7.4
462.7.4
46	8.4
47 :	
47	1.5
47	2.5
70	3.5
87 :	
87	1.6
88	2.6
89	3.6
90	
102	
103	
104	
107	