

:

-

2010 / 1431

:

:

-

-

. :

-

-



:

:

20610059 :

. :

2010-09-08

:

-: . : .1
-: . : .2
-: . : .3

-

:

:)"

.

.....(24

..

.

.

:

.

.....:

.....:

:

.(FAO,2003)

:

.(2007)

:

)

:

(

.(FAO,2003)

:

.(1997)

:

)

.(1987

:

(FAO,2003)

:

.(FAO,2003)

)

:

(
.(FAO,2003)

.

:

.(2009)

:

.(2010)

:

.(2007)

:

:

.(FAO,2003)

:

.(2007)

:

)
.(2005

FAO : Food and Agriculture :
Organization of the United
Nations

ESCWA : Economic and Social :
Commission for Western
Asia

SPSS : Statistical Package for Social :
Sciences

ANOVA : Analysis of Variance :

CRS : Creative Research System :

	2010	2009	
()
.		(%2.2)	.
.		.	.
.		.	.
:			
	(3.56)	(3.57)	(3.78)
		(3.50)	(3.56)
	(4.30)		:
		(4.32)	
-			(4.24)
.	(4.18)		(3.93)
	(4.50)		(4.52)
	(3.91)		
.	(3.90)		(4.20)
			(4.22)

3.36

. 3.28 3.30

Development needs of the rural population in the western province of Bethlehem: reality and challenges

Abstract

This study was implemented during the period May 2009 and June 2010 which represented the inhabitants of the western villages in Bethlehem Directorate (Battir, Husan, Nahaleen, Wadi Foukin). The sample included 2.2% of the whole population and it was chosen randomly. The study probes the development needs of the inhabitants of the western villages in the areas of health, education, infrastructure, agriculture, social services and the available resources and the sources that could fulfill and achieve those needs.

The study focused on the descriptive and qualitative approach which depends on collecting data which is suitable for the study as the researcher. Did many literature review as well as conducting interviews with people concerned from local councils whom which the questionnaire was developed accordingly. The questionnaire was distributed among five areas and it depended on Likert scale of answers and the data was analyzed through SPSS and Excel programs.

The results have shown that the most important areas were in the agricultural area which represented (3.78), then comes the infrastructure which represented (3.57), education (3.56), then came the social services (3.56), and the last area of importance is the health sector which represented (3.50). However, the most important level for each sector were: the need to make roads to reach the lands in the agricultural sector with a rate of (4.30) , the need to construct sewage networks in the sector of infrastructure with a rate of (4.32), the need to add supporting facilities in the educational sector with a rate of 4.24 and the need to construct socio cultural centers (3.93), and the last is the need for Ambulances (4.18), in the health sector.

The most important obstacles that impede the fulfillment of development needs in these villages are: the apartheid wall (4.52), Israeli confiscation of lands (4.50), the lack of official interest in financing the projects in the area (3.91).

The results also show that most important resources available, which can help to meet the development needs, are: the community desire for change (4.22) and the presence well educated youth (4.20), and the community possession of expertise with an average of (3.90).

The most important actors, which is expected to have a role in helping to meet the development need in area, according to the respondents are: foreign donations from donor countries and international institutions, humanitarian and non-governmental organizations, and United Nations organizations, with averages of 3.36, 3.30, and 3.28, respectively.

In the light of the results mentioned above, the study recommends that the agricultural sector should be activated as most of the areas are lands suitable for agriculture, as well as constructing roads to reach those lands and work in cultivating them, as well as defend the lands which are endangered from the Israelis, it is also essential that work should be done to improve the level of health services through improving the status of health centers according to the inhabitants needs, as well as enhancing the level of schools to be compatible

with the increase in the number of students to enhance the level of education, it is also important to improve the infrastructure by constructing sewage networks as well as enhancing the role of local institutions to work to fulfill the needs of the inhabitants, and to achieve this there should be campaigns to raise awareness of the importance of elections so that people are more capable to choose candidates who are able to implement development programs according to their needs.



1.1

'()

2.1

3.1

:

•

.(2007)

-
-

4.1

:

-
-
-
-

5.1

:

)

)

(

.(

)

.(

-
-

()

-
-

6.1

:

()

-

()

-

-

-

7.1

:

(...)

-

-

-

-

-

$\geq \alpha$

()

:

0.05

-
-
-
-
-

8.1

:

:

:

:

:

:

:

1.2

2.2

: 1.2.2

)
(
" " "
" " " "
. (1993) "
" :
. (1993) "

(1.2)

" "

,

.(2010)

.

:

()

•

.(

)

•

)

(

•

)

(

•

.

•

.

:

.

: .1.1.2.2

:
:
:

.(2010) .

"

)

.(1999) (

.(1999)

.
.

)

.(1999)

"

(FAO,2003)

:

.2.2.2

:

" : (1993) Wayne A.Kimmel •

" : (1993) Bowers and Associates •

"

" : (1993) Human service institute •

"

: (1993) Center for Social research and Development •

"

: (1993) INC •

:

.3.2.2

: (1993)

•

•

•
•

)
(

•
•
•
•

:

.4.2.2

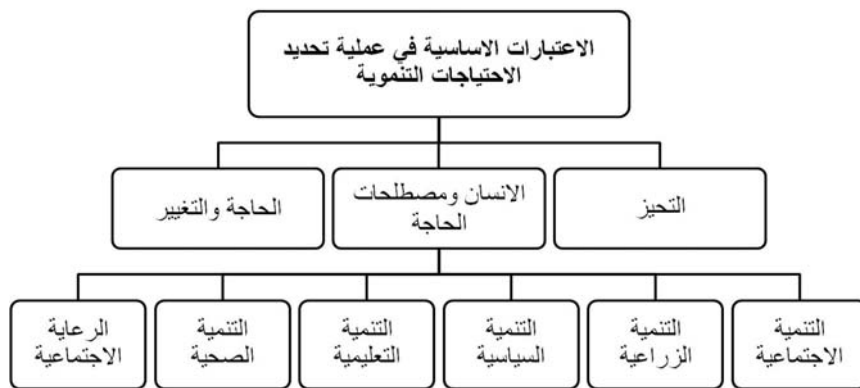
)

:(1993

•
•
•
•

:
•
•
•
•
•

(1.2)



(1993)

:1.2

:

.5.2.2

:(FAO, 2003)

•
•
•

•

:

.6.2.2

:(2009)

•

•

•

•

•

•

•

:

.7.2.2

(2007)

)

()

:

.8.2.2

:(2009)

:

•

•

•

•

•

•

•

:

:

.9.2.2

:(2010)

•

•

•

:

:(2010)

○

○

○

-
-
-

-
-
-
-
-

:

.10.2.2

.(2009)

(2002)

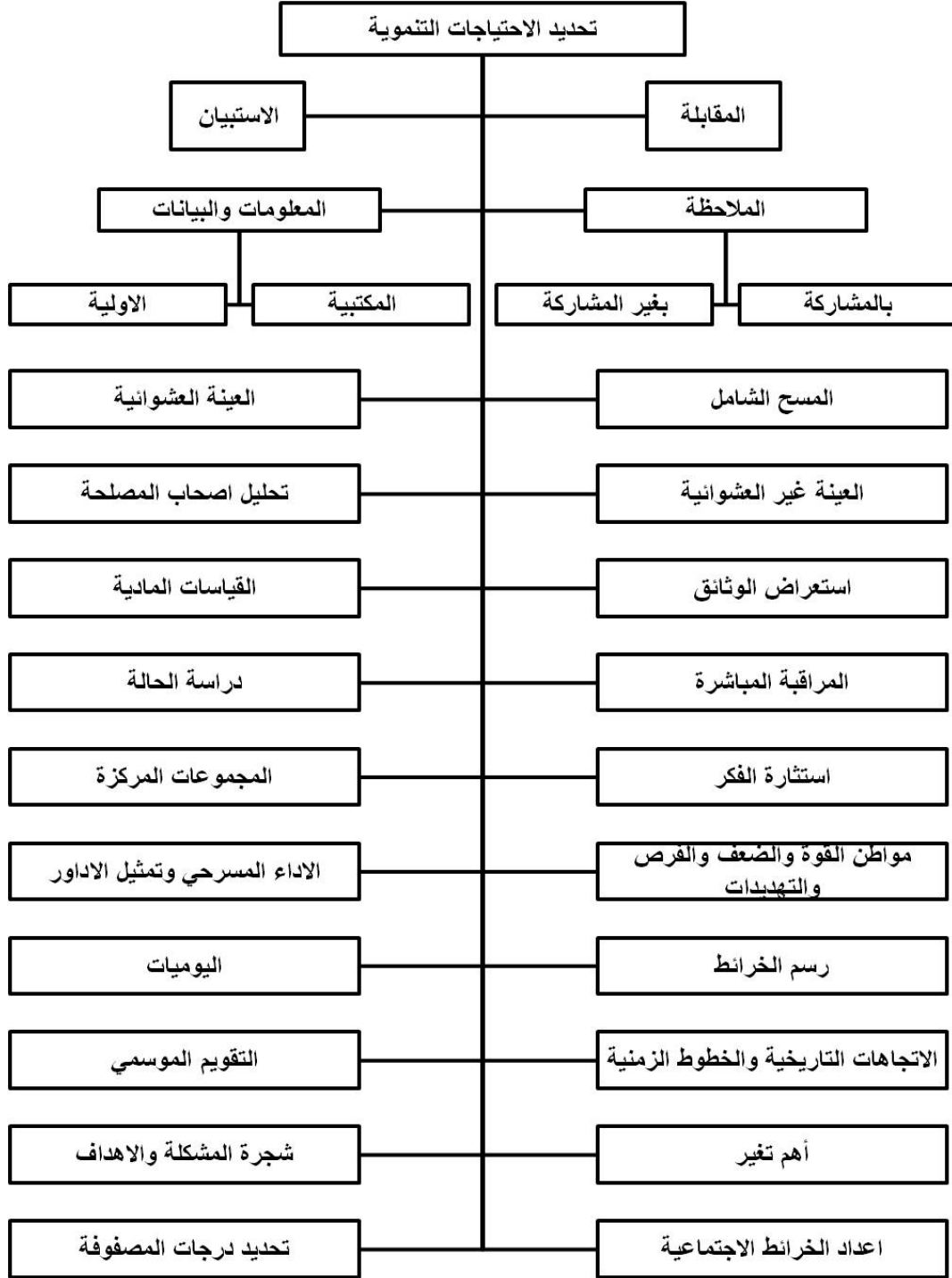
:

(2.2)

:

.1.10.2.2

.(2009) "



:2.2

)

.(

:

.2.10.2.2

:

:

•

:

•

:

○

: ○

"

.(2009) "

○

" : ○

.(2009) "

:

●

:

●

:

●

.(2009)

:

.11.2.2

:(2009)

: •

: •

: •

: •

•

"

"

.(2009)

.

.(2009)

: .12.2.2

:(2009)

-
-
-
-
-
-
-
-
-

: .13.2.2

:(2009)

- : •
- : •
- : •
- : •

-
-

: **.16.2.2**

" "

" " "

.(1989) "

: **.17.2.2**

()

)

)

.(1989) (

:

.1.17.2.2

:(1989 2009)

:

-
-
-
-
-
-

:

.2.17.2.2

:(1989)

:

-

•

•

•

: **.18.2.2**

()

:(1981)

•

•

•

()

•

•

)

(

•

)

(

: **.19.2.2**

(Ellis1965)

:

Row

1971

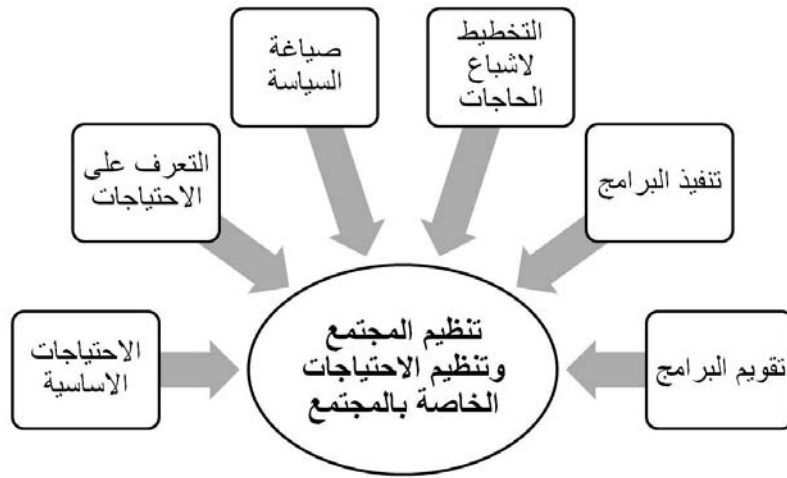
(Ramas Pandy & John E.J.1981)

." (2007)

(2007)

-
-

(3.2)



(2007)

:3.2

(3.2)

.20.2.2

UNESCO (2006)

(2006)

(2006)

(2009)

:

(2005)

:

.1.20.2.2

:

()

()

:

()

.()

()

()

() ()

: **.2.20.2.2**

:

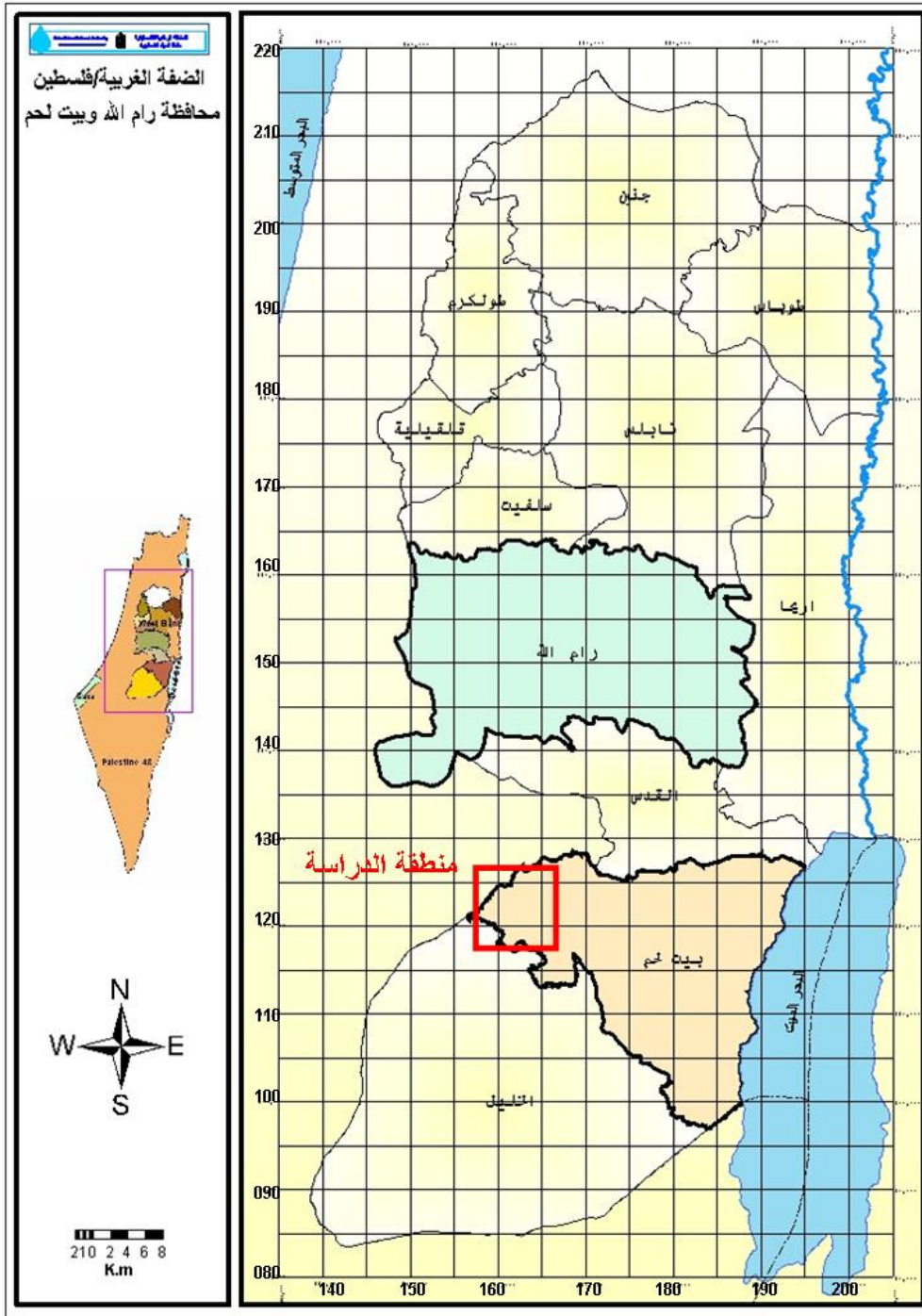
()

.21.2.2

()

170 160 130 120

:(5.2) (4.2)



(2009) :4.2

500

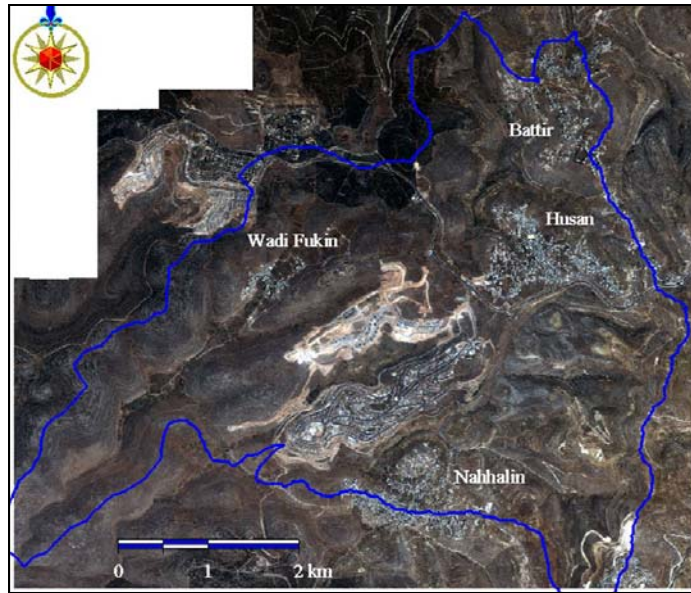
31

14

. / 500

.(PWA, 2002) .

900 200



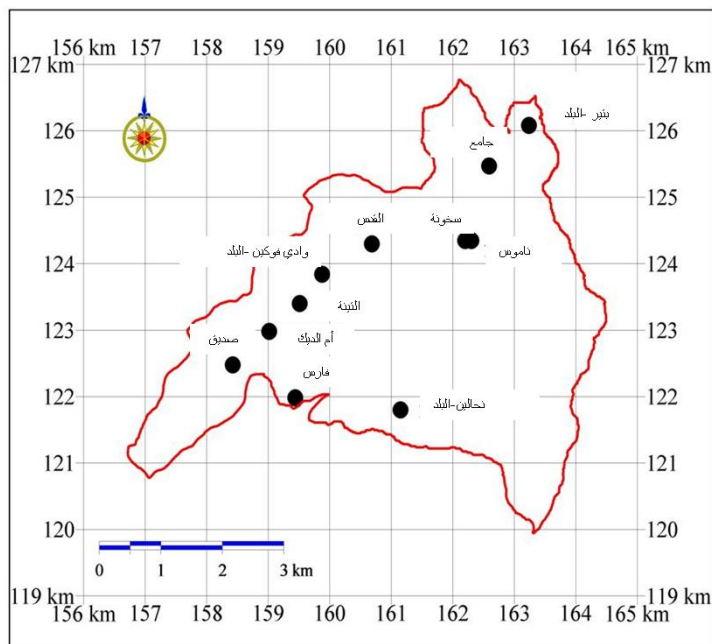
.(Rabe, 2007)

:5.2

(6.2)

(Rabe,

.2007)



.(Rabe, 2007)

:6.2

%20

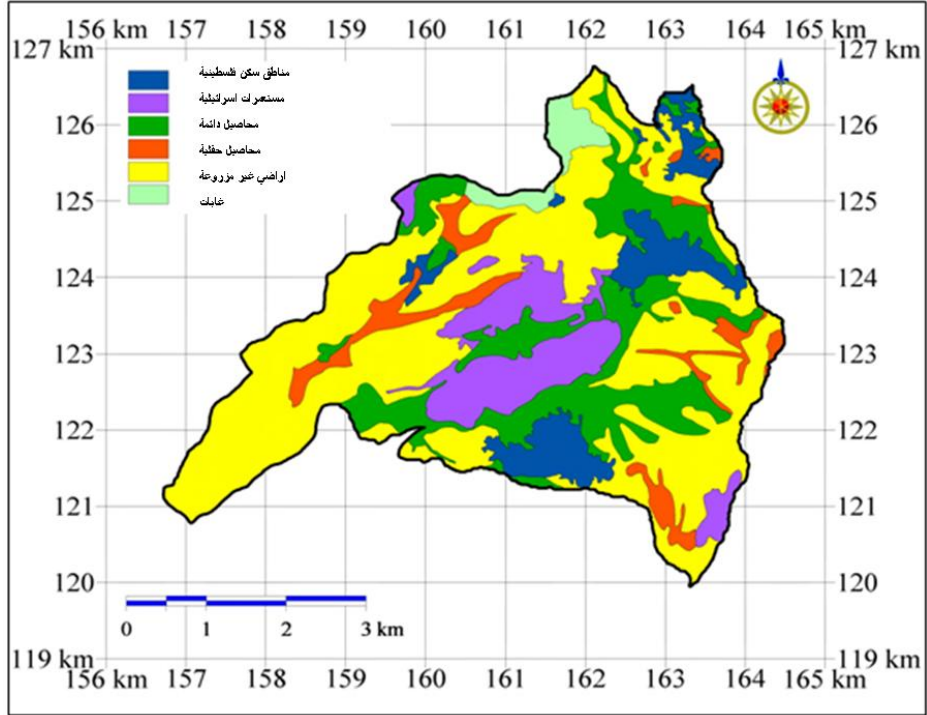
%50

12

%10

%2.0

:(7.2)



.(Rabe, 2007)

:7.2

:

:

1.21.2.2

620

14

6000

.(2010)

1945 (620) (316) 1922
1996 1987 (2700) (1100) 1967
) .(6827) 2007 . (3634)
. (2007

" "

.(2009)

.(2009)

:

.2.21.2.2

(800)

9

7200

31

(396) 1922 .
(1150) 1967 1945 (770)
(2010) (3470) 1996 1978 (2600)
(2007) (5.551) 2007

(2009)

:

()

: **.3.21.2.2**

10

()

9900

()

. 1954

1945 (208) (149) 1922
2007 (2010) (687) 1996
. (2007)) . (1.168)

()

.1982 ()

1948

1972

1954

1967

1954

5

. 1972

%80

1948

1948

.(2009)

:

"world vision"

: **.4.21.2.2**

8

420

800

5

.22.2.2

:

(8.2)

)

(
2003

:

)

(
()

20

) .

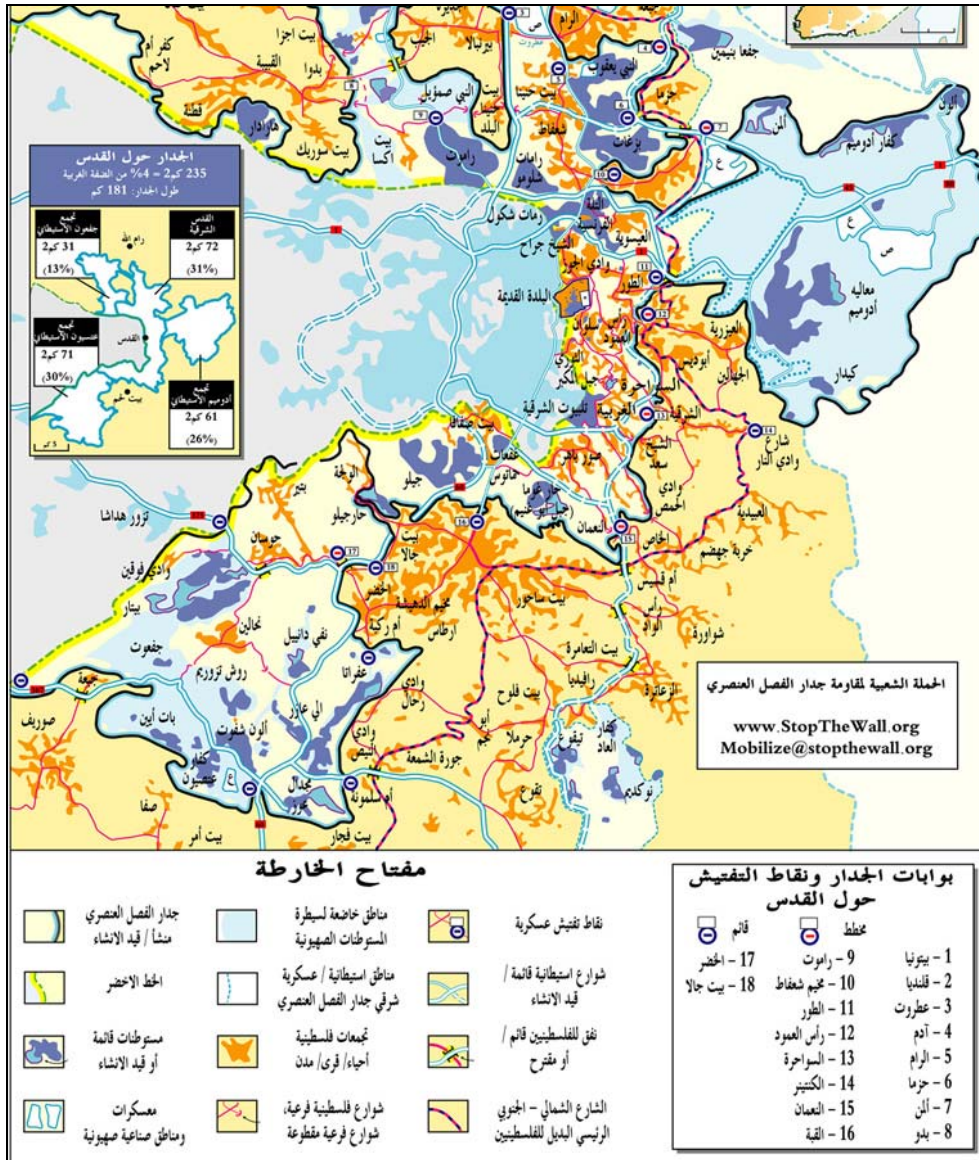
(2005

•

•

•

•



—) :8.2

.(2009

3.2

" (2009)

.(:

1948

.(2005) "

) "

(

()

.SPSS .1051

" : (2004)

" ()

:

"

"

: (2002)

(

)

...

:

:(2002)

.(

)

)

:

(

)

)

(

.(

:(1993)

.(2000 – 1994)

)

300

:

"

"

"

"

"

"

:

"

"

:(1993)

1993

)

.(

()

"

:(1996)

"

()

91/90

(Quantitative framework)

(Scenarios)

:

4.2

()

" "

:

•

•

:

•

•

•

•

:

•

•

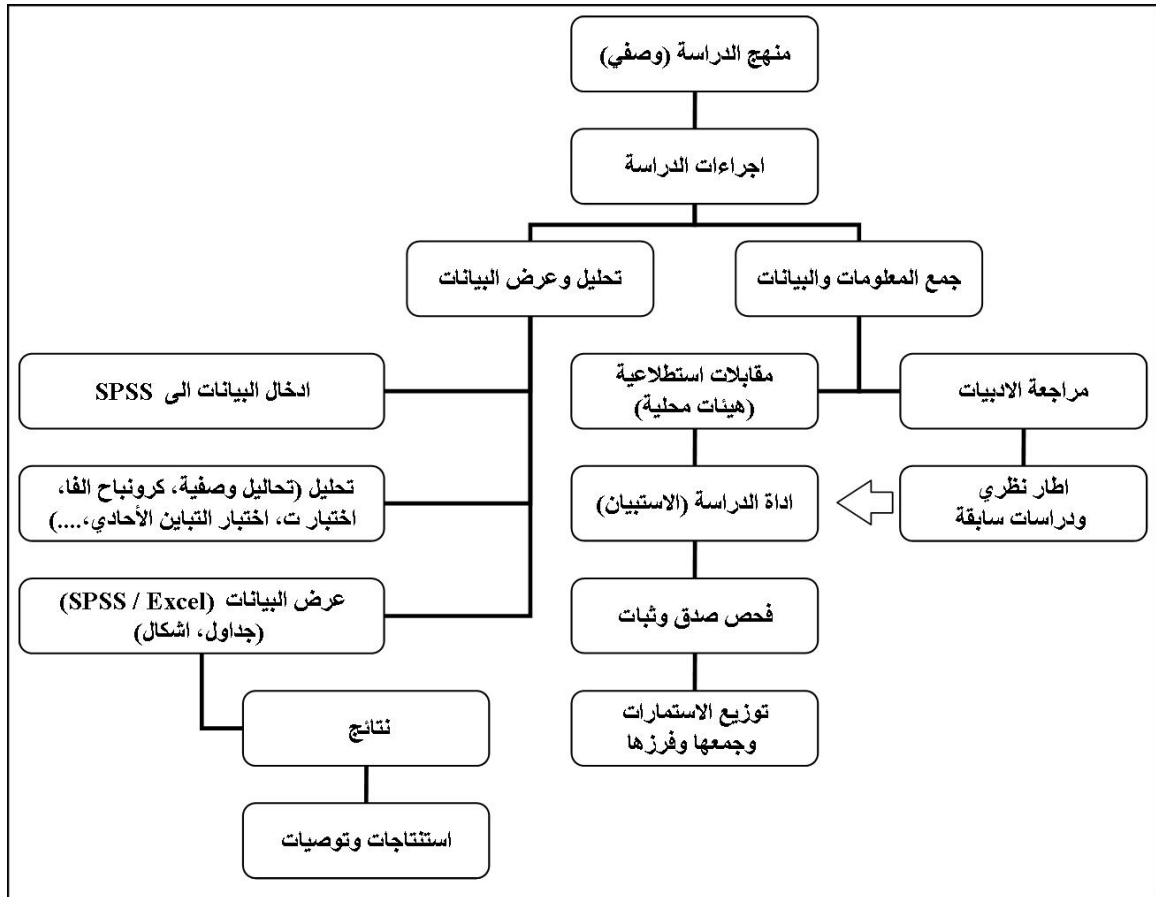


1.3

1.3

2.3

(1.3)



:1.3

3.3

(1.3)

(2.3)

(3.3)

(.1.3)

):

.(

:1.3

5	
57)
	.(
12	
9	
5	

4.3

(4.3)

5.3

(3.3) (2.3)

(Pearson correlation)

:2.3

0.00	0.769		1
0.00	0.848		2
0.00	0.876		3
0.00	0.581		4
0.00	0.818		5
0.00	0.523		6
0.00	0.324		7
0.00	0.322		8
0.00	0.769		

(0.769)

(2.3)

0.876)

(0.000)

.(0.000)

(0.3.22

0.05

:3.3

0.914		1
0.878		2
0.871		3
0.857		4
0.855		5
0.797		6
0.793		7
0.730		8
0.95		

(3.3)

0.95

87.8

91.4

. 79.3

73.0

6.3

(SPSS)

)

t-test

(ANOVA)

7.3

:

:

:

.

(

)

:

.2010

2009

8.3

:

):

•

.(

(2.3):



:2.3

10.3

%2.2

11.3

(5.3)

()

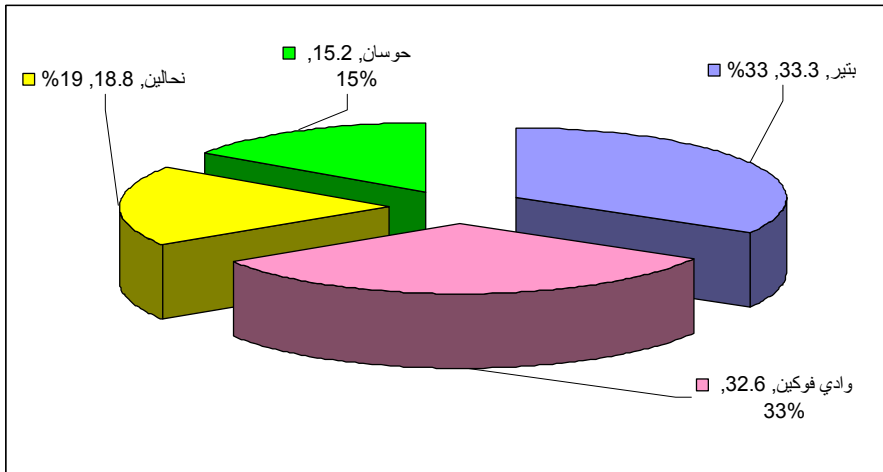
%18.8

%32.6

%33.3

%15.2

:3.3

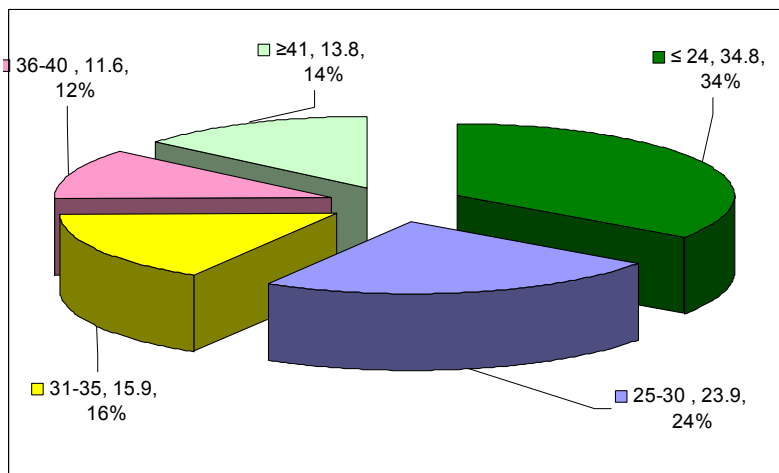


:3.3

4.3

30-25	(%34.8)	24	(%23.9)
41	(%15.9)	35-31	(%13.8)
%11.6	40-36		

.4.3



:4.3

80

.%42

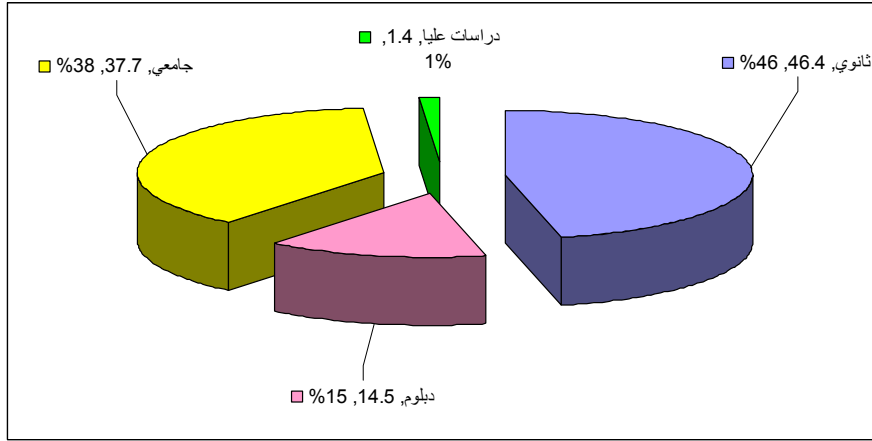
58

%58

51

5.3

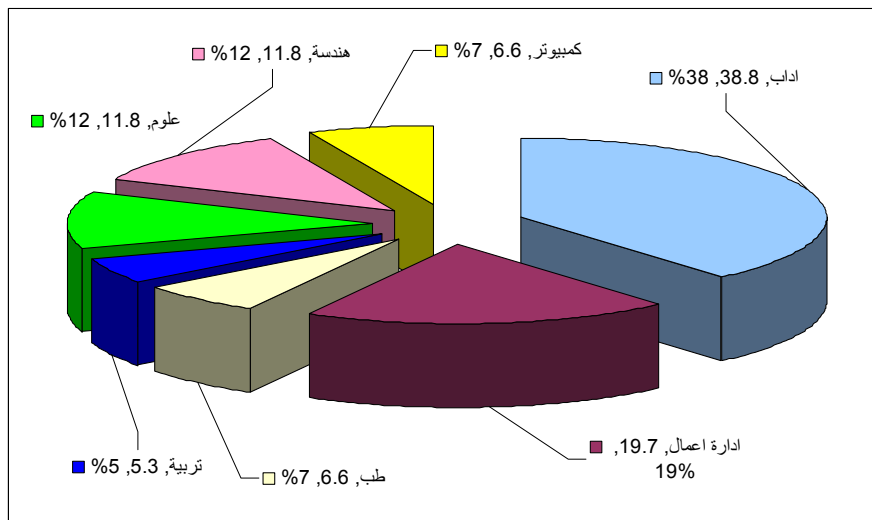
ثانوي, 46.4%
جامعي, 37.7%
دبلوم, 14.5%
دراسات عليا, 1.4%
1%



:5.3

6.3

ادارة اعمال, 19.7%
اداب, 38.8%
هندسة, 11.8%
طب, 6.6%
كمبيوتر, 6.6%
علوم, 11.8%
تربية, 5.3%
19%



:6.3

1.4

1.4

400

0.01

5

1.4

(2009)

9

: -1.4

.(2009)

	↑ ↑	2		5.00 – 4.51
		1		4.50 – 4.01
		2		4.00 – 3.51

: -1.4

.(2009)

	↓ ↓ ↓		3.00
		1	2.99 – 2.51
		2	2.50 – 2.01
		1	2.00 – 1.51
		2	1.50 – 1.00

2.4

"

"

"

:(2.4)

:2.4

0.69	3.78		4
0.86	3.57		3
0.71	3.56		2
0.65	3.56		5
0.59	3.50		1
0.54	4.31		

(4.31)

(1.4)

)

(
3.78-3.5

: .1.2.4

:
: .1.1.2.4

:(3.4)

: -3.4

(%)								
							:	
4.3	4.3	13.8	23.9	53.6	1.10	4.18		B16
0.7	5.8	21.0	39.9	32.6	0.92	3.98		B2
2.2	5.1	21.7	37.0	34.1	0.98	3.96	(....)	B5
1.4	7.2	23.9	30.4	37.0	1.02	3.94		B12
5.1	12.3	26.1	23.2	33.3	1.20	3.67		B1
0.7	13.0	30.4	31.9	23.9	1.01	3.65		B4
2.2	10.9	29.0	41.3	16.7	0.96	3.59	- - -	B15
4.3	10.1	38.4	21.0	26.1	1.11	3.54		B7
7.2	13.0	26.1	27.5	26.1	1.22	3.52	()	B3
5.1	11.6	36.2	31.2	15.9	1.05	3.41		B6

: -3.4

(%)								
							:	
5.8	18.1	32.6	23.9	19.6	1.15	3.33		B10
4.3	17.4	35.5	29.0	13.8	1.05	3.30		B8
3.6	15.2	44.9	27.5	8.7	0.94	3.22		B13
3.6	21.0	43.5	23.2	8.7	0.96	3.12		B14
8.7	31.9	31.9	19.6	8.0	1.08	2.86		B11
13.0	27.5	35.5	17.4	6.5	1.09	2.77		B9
					0.60	3.50		

(3.50)

(3.4)

2.77

.4.18

(9)

(5)

:

(4.18)

(3.98)

.(3.96)

(/)

(2.77)

.(2.86)

:

.2.1.2.4

:

:4.4

(%)								
							:	
	2.2	11.6	46.4	39.9	0.74	4.24)	C2
							(...)	
0.7	4.3	17.4	33.3	44.2	0.91	4.16	(....)	C8
	3.6	26.8	31.2	38.4	0.89	4.04		C1
3.6	11.6	20.3	31.9	32.6	1.13	3.78		C3
4.3	10.1	28.3	31.9	25.4	1.10	3.64		C10
8.0	8.7	29.7	31.2	22.5	1.17	3.51	/	C7
8.7	19.6	27.5	27.5	16.7	1.20	3.24		C5
8.7	11.6	40.6	25.4	13.8	1.10	3.24		C6
16.7	18.8	15.2	26.8	22.5	1.41	3.20		C4
13.0	20.3	24.6	29.0	13.0	1.24	3.09	(/ /)	C9
17.4	15.2	26.8	26.8	13.8	1.29	3.04		C11
					0.72	3.56		

(4.4)

(3.56)

.(4.24)

(3.04)

:

(4.24)

(...)

(4.16)

(/)

.(4.04)

.(3.04)

(3.78)

(...)

.(4.23)

: **.2.2.4.2**

) / . ()
(

: **.3.2.2.4**

/ . ()
)
(
/

:

.3.2.4

:

: .1.3.2.4

:(5.4

:

: -5.4

(%)								
1.4	2.2	15.2	25.4	55.8	0.91	4.32		D1
2.2	2.9	18.1	23.2	53.6	0.99	4.23		D5
6.5	6.5	23.2	20.3	43.5	1.23	3.88		D3
4.3	4.3	36.2	32.6	22.5	1.02	3.64		D6
10.1	10.9	24.6	25.4	29.0	1.29	3.52		D2
10.1	10.9	26.1	24.6	28.3	1.29	3.50		D4
6.5	15.2	30.4	26.1	21.7	1.18	3.41		D7
4.3	16.7	34.1	24.6	20.3	1.12	3.40		D8
15.9	12.3	26.1	23.2	22.5	1.36	3.24		D11
17.4	16.7	23.2	23.2	19.6	1.37	3.11		D10
8.7	26.8	29.7	22.5	12.3	1.16	3.03		D9
					0.87	3.57		

(3.57)

(5.4)

(3.03)

(6)

(4.32)

(5)

:

.(4.23)

(4.32)

•

•

()

(3.03) (3.11) (3.24) (3.88)

:

.2.3.2.4

:

.3.3.2.4

: **.4.2.4**

:

: **.1.4.2.4**

(6.4)

: -6.4

(%)							
0.7		13.8	39.9	45.7	0.759	4.30	E1
2.2	2.2	14.5	31.9	49.3	0.932	4.24	E5

:

: -6.4

(%)								
0.7	0.7	19.6	37.7	41.3	0.822	4.18		E2
1.4	3.6	15.9	36.2	42.8	0.919	4.15		E3
0.7	2.2	19.6	39.9	37.7	0.846	4.12		E4
5.1	13.0	31.9	26.1	23.9	1.141	3.51		E9
3.6	10.9	36.2	33.3	15.9	1.005	3.47	(.... /)	E6
4.3	12.3	36.2	28.3	18.8	1.068	3.45		E7
3.6	15.9	34.1	26.8	19.6	1.087	3.43		E8
22.5	15.2	26.8	17.4	18.1	1.400	2.93		E10
					0.699	3.78		

(3.78)

(6.4)

(6)

(3)

(2.93)

:

.(4.30)

(4.24)

(4.30)

.(4.18)

.(2.93)

.(3.51)

•

•

: **.2.4.2.4**

()

)

(

: **.3.4.2.4**

)

(

)

(

:

.5.2.4

:

:

.1.5.2.4

(7.4)

:

:7.4

(%)								
0.7	6.5	25.4	33.3	34.1	0.961	3.93	(/)	F1
1.4	6.5	31.9	29.0	31.2	0.998	3.82		F2
2.2	7.2	31.9	31.2	27.5	1.011	3.75		F5
2.9	8.7	35.5	22.5	30.4	1.086	3.69	/) (F4
2.9	13.8	27.5	38.4	17.4	1.026	3.54	(/ /)	F6
4.3	14.5	32.6	30.4	18.1	1.080	3.43		F8
2.9	16.7	29.0	39.9	11.6	0.994	3.41	(... /)	F7
4.3	24.6	29.0	27.5	14.5	1.109	3.23		F9
9.4	21.0	24.6	29.0	15.9	1.217	3.21		F3
					0.652	3.56		

(3.56)

(7.4)

(4)

(5)

(3.21)

(3.93)

(/)

:

(3.82)

(3.93)

" (3.21)

(3.75)

."

: **.2.5.2.4**

/

)

(

: **.3.5.2.4**

()

:

.6.2.4

"

"

:

:

.1.6.2.4

(8.4)

:8.4

.(2009)

	↑	2		5.00 – 4.51
		1		4.50 – 4.01
	↑	2		4.00 – 3.51
		1		3.50 – 3.01
	↑			3.00
	↓	1		2.99 – 2.51
		2		2.50 – 2.01
	↓	1		2.00 – 1.51
		2		1.50 – 1.00

.(9.4)

(3.77)

(9.4)

(6)

(3)

(4.52)

.(2.40)

: -9.4

(%)								
0.7	0.7	8.7	25.4	64.5	0.747	4.52		G1
0.7		7.2	32.6	59.4	0.697	4.50) (G2
2.9	5.8	26.8	26.1	38.4	1.070	3.91		G4
2.9	5.8	33.3	30.4	27.5	1.020	3.74		G5
2.2	10.9	28.3	29.0	29.7	1.071	3.73		G6
1.4	12.3	33.3	26.1	26.8	1.052	3.64		G9
3.6	11.6	31.2	28.3	25.4	1.098	3.60		G7
3.6	12.3	35.5	27.5	21.0	1.069	3.50		G8
15.2	13.8	18.8	26.1	26.1	1.396	3.34		G12
8.7	18.1	30.4	24.6	18.1	1.203	3.25		G10

: -9.4

(%)							
10.1	18.1	24.6	31.2	15.9	1.219	3.25	G11
4.3	4.3	12.3	24.6	54.3	1.095	2.40	G3
					0.693	3.77	

:

(4.52)

.(4.50)

()

.(3.91)

.(2.40)

-
-
-

: **.2.6.2.4**

)

)

(

(

.

:

.3.6.2.4

)

.

(

.7.2.4

"

"

.1.7.2.4

(10.4)

:10.4

.(2009)

		2		5.00 – 4.51
		1		4.50 – 4.01
	↑ ↑ ↑	2		4.00 – 3.51
		1		3.50 – 3.01
				3.00
	↓ ↓	1		2.99 – 2.51
		2		2.50 – 2.01
		1		2.00 – 1.51
		2		1.50-1.00

.(11.4)

(3.74)

(12.4)

(8)

(4.22)

.(3.43)

:11.4

(%)							
	2.9	18.1	33.3	45.7	0.844	4.22	H3
	1.4	20.3	35.5	42.8	0.809	4.20	H1
0.7	3.6	29.7	37.0	29.0	0.890	3.90	H2
2.2	9.4	29.7	37.7	21.0	0.985	3.66	H6
4.3	6.5	31.2	37.7	20.3	1.019	3.63	H7
8.0	10.1	23.9	29.7	28.3	1.223	3.60	H9
6.5	13.0	26.8	29.0	24.6	1.185	3.52	H4
1.4	13.0	39.1	25.4	21.0	1.013	3.51	H8
6.5	9.4	39.1	24.6	20.3	1.113	3.43	H5
					0.625	3.74	

:

.(4.20)

(4.22)

.(3.43)

(3.90)

: **.2.7.2.4**

)

(

: **.3.7.2.4**

)

(

: **.8.2.4**

"

:

"

: **.1.8.2.4**

(12.4)

:12.4

.(2009)

	↑ ↑ ↓ ↓	2		5.00 – 4.51
		1		4.50 – 4.01
		2		4.00 – 3.51
		1		3.50 – 3.01
				3.00
		1		2.99 – 2.51
		2		2.50 – 2.01
		1		2.00 – 1.51

.(13.4)

(2009)

:13.4

(%)								
6.5	13.8	37.7	21.7	20.3	1.145	3.36)	I3
6.5	21.0	26.1	28.3	18.1	1.181	3.30	(I2
7.2	19.6	31.2	22.5	19.6	1.195	3.28		I5
29.7	18.1	23.9	8.7	19.6	1.472	2.70		I1
21.7	30.4	28.3	12.3	7.2	1.173	2.53		I4
					0.859	3.03		

(3.03)

(13.4)

(3)

.

.

.(2.53)

(3.35)

:

)

•

(3.36)

(

.(3.28)

(3.30)

•

.(2.53)

(2.70)

)

(

:

.2.8.2.4

()

()

:

.3.8.2.4

()

()

.

.

:

3.4

$0.05 \geq \alpha$

"

:

(14.4)

(14.4)

:

.0.05

:

. 0.05

3.79

3.36

3.55

3.62

.

:14.4

Sig		F / T		Sig		F / T		Sig		F / T		Sig		F / T	
0.014	3.801	0.792	0.346	0.068	2.481	0.06	2.586	0.373	1.057	0.006	4.354				
0.563	0.747	0.952	0.172	0.299	1.247	0.426	0.977	0.373	1.079	0.285	1.27				
0.221	1.381	0.221	1.577	0.517	1.11	0.155	1.444	0.025	0.684	0.006	0.647				
0.058	2.612	0.622	0.593	0.378	1.046	0.068	2.483	0.613	0.606	0.76	0.391				
0.515	0.879	0.867	0.414	0.805	0.502	0.506	0.892	0.4	1.052	0.733	0.595				

:

0.05

0.05

3.51

3.49

0.05

.3.66 3.77

4.4

:

(3.77)

(4.30)

(3.57)

(4.32)

•

•

(... (3.56)) •

(4.24)

(3.56) •

(/)

(3.93)

(3.50) •

(4.18)

(3.77) •

(4.52)

(3.74) •

(4.22)

) (3.03) •

(

(3.36) •



1.5

•

•

•

•

•

•

•

•

:

•

•

•

•

•

•

•

:

•

•

•

- :
- " : (2002) . •
 - (home.birzeit.edu/dsp/arabic/research/publications/2002/tulkarem.pdf, 1.11.2008)
" .
 - : (2009) •
 - : (2004) - •
 - " "
 - (http://home.birzeit.edu/cds/arabic/research/publications.pdf.1.11.2008)
: (2007) •
 - (http://www.palestineremembered.com/Bethlehem/ar/index.html.7.3.2010)
 - : (2006) - •
 - (http://pal-monitor.org/Portal/modules.1.5.2010)
.(2007) •
 - (http://www.pcbs.gov.ps/Portals/_PCBS/Downloads/book1487.pdf.5.10.2008)
: (1993) . •
 - : (2005) •
 - (http://www.stophewall.org/arabic/cgi-bin/arabic/publish/article_17.shtm, 2/5/2009)
: (2007) . •
 - (http://www.youth22.com/forum/showthread, 20/3/2010)
: (2010) . •
 - " "
 - (http://afsc.ps/wordpress/?p=304. 3/5/2010)
() : (2009) •
 - " .: (2002) . •
 - "

(<http://home.birzeit.edu/cds/arabic/research/publications/2002/bethlahem.pdf>, 1/11/2008)

: (2002) •

(http://www.ifad.org/evaluation/guide_a/toc.htm, 10.3.2009)

: (1995) •

: (2006) •

: (2006). •

. () " •

: (2007) •

: (1989) •

: (1999) •

: (2006) •

. () •

: (2009) •

. () •

(<http://jeninnet.net/vb/showthread.php?t=16813882>, 10/5/2010)

: (2009) •

: (2009). •

: (1997) •

: (2005) •

: (2005) (UNSCO) •

: (2003) " " •

(<http://www.fao.org> .5.10.2008)

• (2003) .

• (2005)

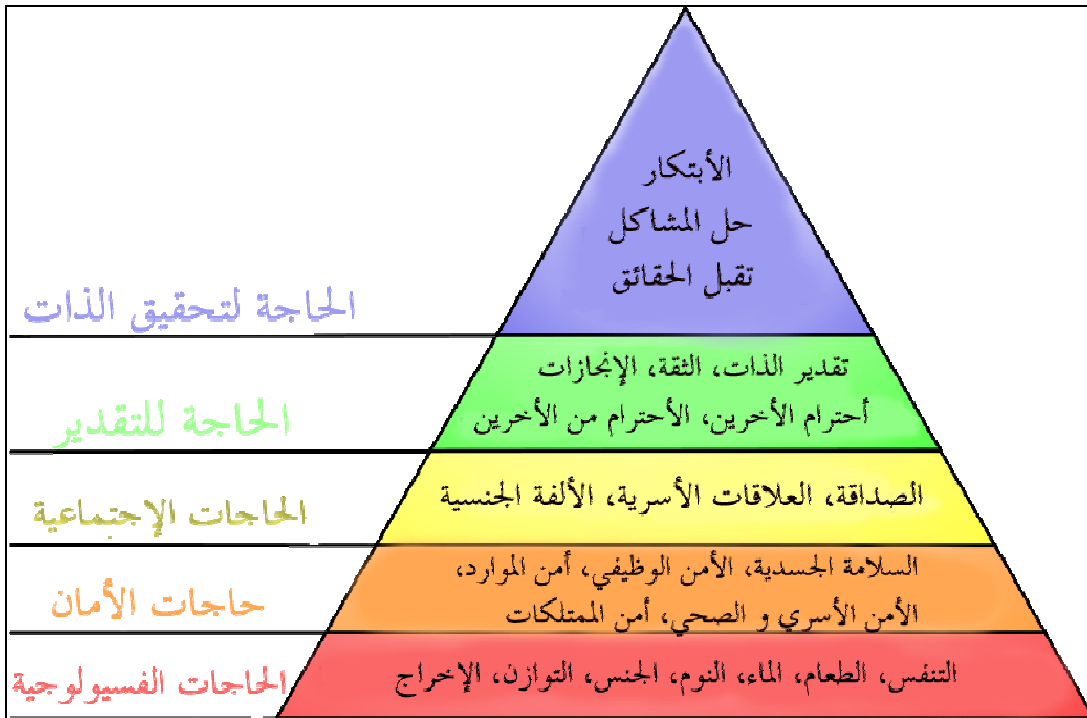
• (2007)

(http://qd-association.org/data/Social_Development_Vision_in_Palestine.pdf.2008/11/25)

• (2010) -

(<http://ar.wikipedia.org/wiki.10.5.2010>).

- Creative Research System (2004): Sample Size Calculator. Petaluma, USA.
(<http://www.surveysystem.com/sscalc.htm>,12-902008)
- Ellis and Buchnam (1965): Aproaches to Economic Development. N.Y. Free Press.
- PWA-Palestinian Water Authority (2002): Sustainable management of the West Bank and Gaza aquifers. University of Newcastle, Palestine
- Rabe, M. (2007): Hydrochemical and Hydrogeological investigations of the water resources of Serar Al-Janoubi catchment area – Palestine. Al Quds University, Palestine. M.Sc. Thesis (unpublished).
- Pandey,R. John,E. (1981): Social Development, Conceptual, Methodological, Policigissues. N.Y., ST. Martin’s Press, Inc.



:1.3



:

:

:

. :

-

2009/2008

:

.....:	.1
.....: /	.2
.....:	.3
.....:	.4
.....:	.5
.....:	.6

:

:

.....:	•
.....:	•
.....:	•
.....:	•
.....:	•
.....	

.....

.....

.....

.....

()

.....

.....

.....

.....

:

:2.3

		.	.1
/		.	.2
.			
		.	.3
		.	.4
		.	.5
		.	.6
		.	.7
		.	.8
		.	.9
		.	.10

:3.3

: /

:

:

.

—

.

”

”

:

.

:

: / :

..... •
..... •

						:
						C1
)	C2
					(...	
						C3
						C4
						C5
						C6
					/	C7
					(/)	C8
					(/ /)	C9
						C10
						C11

: / :

..... •
..... •

						D1
						D2
						D3

						D4
						D5
						D6
						D7
						D8
						D9
					()	D10
						D11

: / :

- •
- •

						E1
						E2
						E3
						E4
						E5
					(... /)	E6
						E7
						E8
						E9
						E10

: / :

- •
- •

					(/)	F1
						F2
						F3
					(/)	F4
						F5
					(/ /)	F6
					(... /)	F7
						F8
						F9

: / :

- •
- •

:

:

						G1
)	G2
					(G3
						G4
						G5
						G6

						G7
						G8
						G9
						G10
						G11
						G12

: / :

- •
- •

: :

						H1
						H2
						H3
						H4
						H5
						H6
						H7
						H8
						H9

: / :

- •
- •

:

:

						I1
						I2
) (I3
						I4
						I5

: / :

..... •

..... •

:4.3

	:	.	1
	:	.	2
	:	.	3
	:	.	4
	:	.	5
	:	.	6

:5.3

18.8	26		
32.6	136		
15.2	111		
33.3	79		
34.8	169	24	
23.9	116	30-25	
15.9	78	35 -31	
11.6	57	40- 36	
13.8	67	41	
58.0	282		
42.0	205		
46.4	226		
14.5	71		
37.7	184		
0	0		
1.4	7	/	
38.8	102		
11.8	32		
5.3	14		
11.8	32		
6.6	18		
6.6	18		
19.7	53		

85	1.2
86	1.3
89	2.3
90	3.3
97	4.3
98	5.3

11)	1.2
(1993	
15	2.2
25)	3.2
(2007	
28(2009)	4.2
29(Rabe, 2007)	5.2
29(Rabe, 2007)	6.2
30(Rabe, 2007)	7.2
36)	8.2
(2009 -	
45	1.3
50		2.3
	
51	3.3
51	4.3
52	5.3
52	6.3

46	1.3
47	(Pearson correlation)	2.3
	
46	3.3
49	4.3
53		1.4
(2009)	
54	..	2.4
55	3.4
58	4.4
60	5.4
62	6.4
65	7.4
67		8.4
(2009)	
68		9.4
	
71		10.4
(2009)	
72		11.4
	
74		12.4
(2009)	

74		13.4
(2009)	
77	14.4

.....
.....
.....
.....
.....
.....

1	:
1	1.1
2	2.1
2	3.1
3	4.1
3	5.1
4	6.1
4	7.1
5	8.1
7	:
7	1.2
7	2.2
7	1.2.2
9	1.1.2.2

9	2.2.2
9	3.2.2
10	4.2.2
11	5.2.2
12	6.2.2
12	7.2.2
12	8.2.2
13	9.2.2
14	10.2.2
14	1.10.2.2
16	2.10.2.2
17	11.2.2
19	12.2.2
19	13.2.2
20	14.2.2
20	15.2.2
21	16.2.2
21	17.2.2
22	1.17.2.2
22	2.17.2.2
23	18.2.2
24	19.2.2
26	20.2.2
261.21.2.2
27	2.21.2.2
27	21.2.2
30	1.21.2.2
31	2.21.2.2
32	3.21.2.2
33	4.21.2.2

35	21.2.2
36	3.2
42	4.2
44	:
44	1.3
44	2.3
45	3.3
46()	4.3
46	5.3
48	6.3
48	7.3
48	8.3
49	9.3
50	10.3
50	11.3
53	:
53	1.4
54	2.4
55	1.2.4
55	1.1.2.4
56	2.1.2.4
57	3.1.2.4
57	2.2.4
57	1.2.2.4

59	2.2.2.4
59	3.2.2.4
60	3.2.4
60	1.3.2.4
61	2.3.2.4
61	3.3.2.4
62	4.2.4
62	1.4.2.4
64	2.4.2.4
64	3.4.2.4
65	5.2.4
65	1.5.2.4
66	2.5.2.4
66	3.5.2.4
67	6.2.4
67	1.6.2.4
70	2.6.2.4
70	3.6.2.4
71	7.2.4
	
71	1.7.2.4
73	2.7.2.4
73	3.7.2.4
73	8.2.4
74	1.8.2.4
75	2.8.2.4
76	3.8.2.4
76	3.4
	
78	4.4

80	:	
80		1.5
81		2.5
82		
99		
100		
101		
103		