

-

-

**2006 - 1427**

:

-

:

. :

(

)

-



.....:

.....:



1967

.(2005 )

" "

20 :

.( 2005 ) . (j1 )

)

.(2005

)

.(2005

.(2005 )

.(2005 )

. 2000 :

2000

) (j1)

.(2005

2000 :

)

.( 2005

:

.

.(2005 )

:

)

( )

.(2005

:

.( )

.(2005

)

:

(

)

.(2005

)

:

.(2004 ) .

:

.(1996 ) .

:

) .

.(1996

:

.(2003 )

:

.(2003 )

:

.(2001 ) .

"

"

.(1977 )

:

)

.(1994

1973      1974

.(1988 , )

.(2002      )

:

.(2002      ) .

:

.(2002      )

:

.(2002      )

:

-

:

.(2002      )      (      )

:

2006 2005  
( )

SPSS



# **The National Committee Strategies for Confronting the Settlements and its Role in Resisting the Israeli Attacks in the Jericho Governorate and the Jordan Valley (Al- Ghour)**

## **Abstract**

This study was conducted between January 2005 and May 2006. Study population consisted of the Palestinian inhabitants of the Jordan Valley (Jericho and Tubas Governorates), who have been suffering from land loss due to the Israeli attacks for a long time. This very reason encouraged the researcher to carry out this study so as to try to uncover, objectively and by using scientific methods, the fact that settlements in the Jordan Valley aim at confiscating the Palestinian land and water, evacuating the Palestinian population and destroying the Palestinian economy. In addition, the study aimed generally at introducing the role of the National Committee for Confronting the Settlements in repelling against the Israeli settling attacks and the negative effects of the settling activities in the research's target area.

The researcher used the descriptive analytical methodology in collecting data and testing hypotheses by developing a questionnaire and reviewing related literature. The data was analyzed statistically by using SPSS.

Study results showed that the majority of the surveyed emphasized the existence of relationship between the committee and the inhabitants in the target area through real communications and contact. This communication can be vividly seen through the different kinds of aid and support received from the committee like financial, legal, supplies and community support. As part of the committee's community support, the committee used to organize sit-ins in the threatened areas as well as to provide legal advice and follow up in the courts when needed.

In addition, the majority of the surveyed were satisfied with the services offered by the committee such as assigning lawyers. This particular service contributed to the temporary suspension of Israeli resolutions and annulling some of them in some cases. The committee also helped in mobilizing popular support and assistance, besides the committee's role in enhancing solidarity with the citizens, providing raising awareness and guidance programs and fostering cooperation between the governmental and non-governmental organizations for providing support for those who suffer from land loss.

Moreover, the majority of the surveyed highlighted the active public role of the committee through exposing of the Israeli practices in the media, repelling against Israeli settlement attacks by organizing popular sit-ins and marches in the endangered areas, as well as the significant legal role that the committee plays in seeking assistance from the 1948 Arab and Israeli lawyers. The majority also stressed the active role played by some governmental organizations that supported the committee on top of which are the Legislative Council Office, National Organizations' Office, Ministry of Local Government, Civil Liaisons, Ministry of Agriculture and Ministry of Finance. These bodies provided financial assistance, legal follow up, agricultural aids, consultation and guidance.

The majority of the surveyed also emphasized the absence of some governmental organizations including the Radio and Television Stations, Ministry of Public Works and Survey Department. These organizations did not play the role assigned to them so as to

cover and show the events taking place in the Jordan Valley, such as controlling the land and evacuating the population. Neither did the Survey Department see the necessity of surveying all the pieces of land owned and registering them for the sake of protection.

Concerning the impact of the settling activities in the Jordan Valley, the majority of the surveyed stressed the negative impacts on the various sectors. Such effects on agriculture were proved by the confiscation of the arable land and the declaration of it as closed military zones, impeding the access of the farmers to their farms, preventing farmers from expanding their cultivated land, limiting the areas of grazing and hampering shepherd's and cattle owners' movement. As a result, the agricultural production decreased, many inhabitants were forced to change movement's tracks as well as the increase in the environment pollution resulted from waste water and debris from the settlements.

---

1.1

67  
5.8  
420  
( , ) 700 150 1980-1968  
500 , 144  
7 , 15  
) 30 175  
( 2005  
1995  
:

2002

2.1

" "

:

•

•

•

3.1

:

•

•

•

4.1

:

•

•

•

•

•

•

5.1

:

•  
•  
•  
•  
•  
•

6.1

:

:

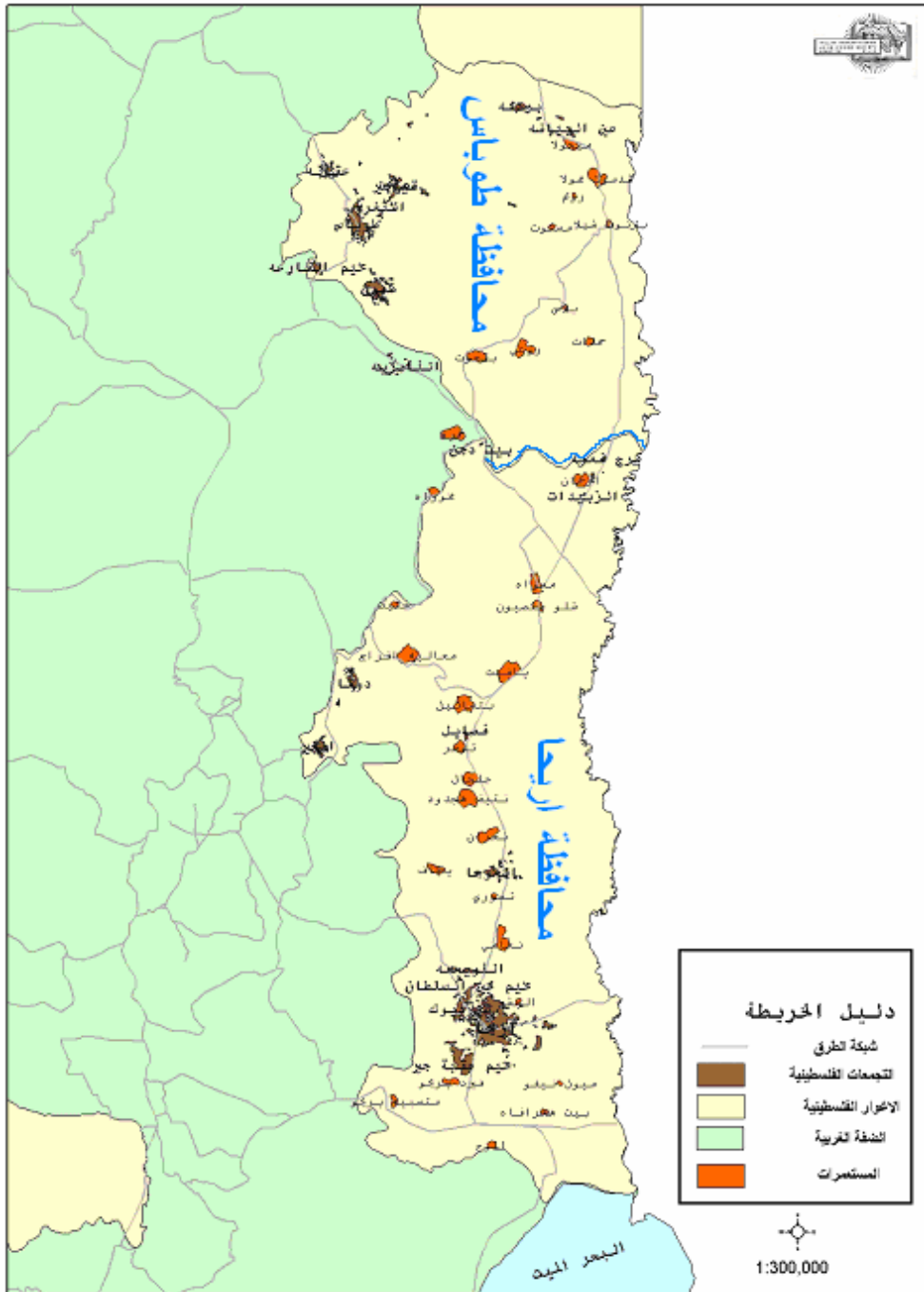
•  
•  
•  
•  
•  
•

:

:

$(0.05=\alpha)$





-2005 )

:1.1

.(

: .1.7.1

12 42764 .<sup>2</sup> 609

.  
) 23 47360 .<sup>2</sup> 365  
(2004

: .2.7.1

:

•

•

•

•

34

:

•

-12

.(2004

) .

%15

40

1967

)

11

(2000

.(1.1 )

(2000

) 1967

:1.1

	( )				
		67	67		
	1,5	0	600		1
	1,5	0	400		2
	1	0	2000		3
	0.2	0	4000	+	4
				+	
				+	+
	3,5	250	500		5
	6	6000	60,000		6
	7,5	0	18,000		7
	6	1700	20,000		8

.(2004 ) .

35 90.124

.(2.1) (1.1)

**8.1**

.( )

:(1998 )

•

...

•

•

**9.1**

5200

35 :  
)

) .

.( 2005

( )

: •

) . 3

.( 2005

**10.1**

. 3 3 28

- ) (2006 - ) 520 51  
.(2006

**11.1**

54

36

10 ) (2006 ) 6  
.(2006

**12.1**

.(2002 ) . 1000

13.1

1967

(2000 ) %40

14.1

1967

2 47130  
60

34

2 30606

.( -2004 )

40

26

35

75

33

250

50

.(2005 ) 50

1967

.(2000 )

5-2

( )

97

2005/6/25

.( -2005 ) .

.(4.1) (3.1)

:

**.1.14.1**

:

· : ●  
· : ●  
· : ●  
· : ○  
· : ○  
· : ○

.(2004 )

( )

2005

90

· : ●  
· : ●  
· : ○  
· : ○  
· : ○  
· : ○

: DCO

. 24

○

•

/

.( )

•

25

•

.

•

.( )

•

•

3/16

•

•

4

•

:

( )

○

.DCO

○

.( )

○

•

: **.2.14.1**

280000

722000

50000 48000

72000

. 5-3

.(2005 ) .

162000

150000

312

.(2005 ) .  
99

.(2005 ) .

**15.1**

.( )

: **.1.15.1**

( )  
. (3.1) (2.1)

( -2006 ) :2.1

<b>3 /</b>			
6.000.000			1
3.500.000			2
4.000.000			3
3.000.000			4
0.600.000			5
7.000.000			6
0.600.000			7
5.300.000			8
30.000.000			

.( -2006 )

:3.1

<b>3 /</b>			
55.000			.1
88.000			.2
110.000	/		.3
88.000			.4
260.000			.5
44.000			.6
175.000	/	(1)	.7
88.000		(2)	.8
88.000		(2)	.9
35.000			.10
88.000			.11
43.000			.12
43.000			.13
43.000			.14
2.000.000			.15
400.000			
43.000.000			

: **.2.15.1**

165

100 50

20

102

(5.1) (4.1) .(- 2006 )

.( )

.(2006 )

:4.1

<b>3 /</b>				
6.000.000	46	34		-1
150.000	1	-		2
1.200.000	8	2		3
-----	-	1		4
3.212.000	22	10		5
1.620.000	9	3		6
<b>12.182.000</b>	<b>86</b>	<b>50</b>		

.(2006 )

:5.1

<b>2 /</b>				
6.508.000	13	5		-1
540.000	1	1		2
702.000	1	2		3
216.000	1	0		4
-----	0	1		5
-----	0	4		6
7.966.000	16	13		

(2005 )

.(2006 ) (2006 )

73 : •  
 148 20 : •  
 148 93 : •

:(2005)

:(2005)

:(2005)

:(2004)

:(2001)

:( 2001)  
( )

:

:(2001)

:(2001)

:(2001)

:(2001)

:(1999)

:(1999)

:(1998)

1967

:(1998)

:(1998 )

:(1998)

( ) :(1998)

.( - , )

:(1998 )

:

:(1998)

:(1998)

3

1953 -48

1967

:(1997)

57-56

1958-67

1967

:(1990)

---

1.2

1897

(2004 )"

50

(2004 ) "

" :1967

420

700

1979

1967

500

.

.

.

2.4

( -2004)

432,275

666

108

40

306

187,092

(1.2)

378

.

<sup>2</sup>

12

1967

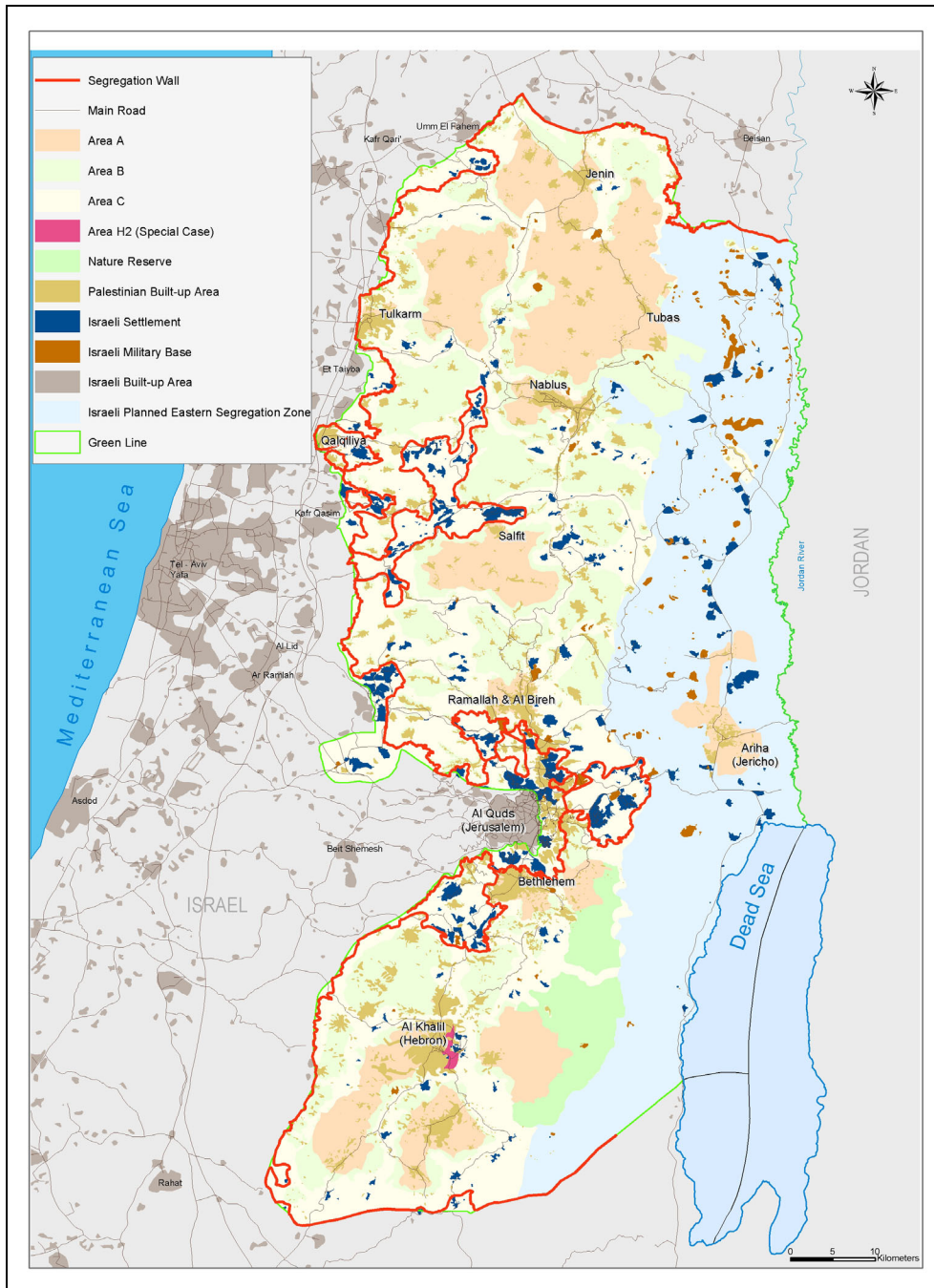
(1998 ) .

**2.2**

<sup>2</sup> 5661

) 2.4

.( -2004



.( -2006 ).

:1.2

1993

( )

:(-2005 )

:

1993

-

1995

.( -2006 ).

(2.2)

: **.1.2.2**

. H2 H1

500

H2

( )

1995

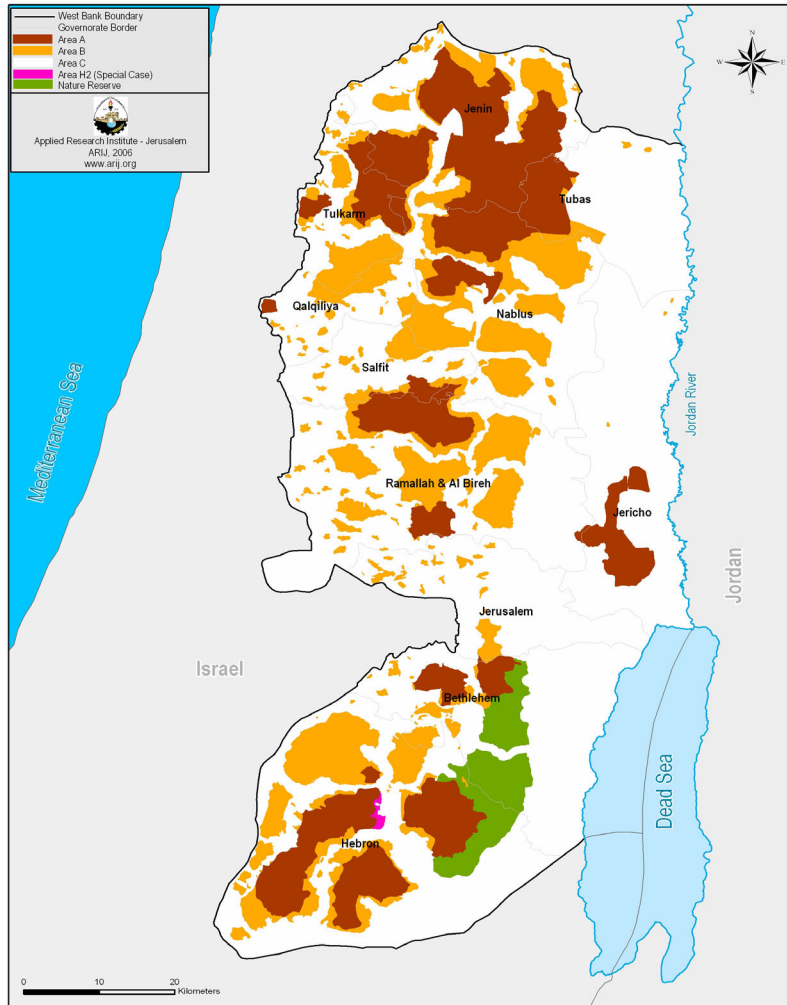
H1

.(2005 ).

: **.2.2.2**

%22 ( )

.(2005 )



.( -2006 ) 1993

:2.2

: 3.2.2

2000

.(2005 )

%60 ( )

3.2

(1985 ) .

: .1.3.2

:

: .1.1.3.2

(1985 )

: **.2.1.3.2**

) "

"

(1985

:

- : •
- : •

(1985 ) .

: **.3.1.3.2**

1967

( )

.( 2001 )

: **.4.1.3.2**

.

.( 2001 )

: **.2.3.2**

:

: **.1.2.3.2**

( ) ( )

.(1998 )

: **.2.2.3.2**

.(1998 )

: **.3.2.3.2**

: **.3.3.2**

: **.1.3.3.2**

1967

•  
•  
•  
•  
• عدم ضم السكان العرب إلى هذه المنطقة (تفكجي، 2002-أ).

:

•  
•  
•  
•  
( 2002 - )

(1977-67)

:

)  
( 20-15 ) ( 2002 - )

( 2002 - ) 1970/9/15

: **.2.3.3.2**

1978

:

.( 15 6

. (1984 )

•  
•  
:

.3.3.3.2

( 120.000)

. (1984 )

:

.4.3.3.2

1976

•  
.(1990 ) .

:

.4.3.2

:

•  
.(1998 )

.(1998 )

4.2

306  
) (44) (38) (53)  
. ( -2004  
40 41  
2004  
%85,1  
. ( -2004 )  
124  
. ( -2004 )

(-2004)

:

:1976 1967 :

•

35

/ 6-1

:1984 1977 :

•

:

: ○

120.000

: ○

50

: ○

93

:1990 1985 :

•

17

/ 5-1

:2003 1991 :

•

2003-99 95 -92

/ 3-0

10

5.2

( )

(1.2)

(2005)

( -2004

)

:1.2

	65.887	38		1
	4.565	19		2
	108.266	31		3
	770	5		4
	42.973	16		5
	11.861	14		6

**6.2**

(1998 )

)

.(1998

( )

:

**.1.6.2**

"

"

: (1998 )

- 
- 
-

1904

( ) ( )

1907

.(1998 , )

1917

1927

.(1998 ) 1929

120

.(1998 )

1931 ( )

1000

1939

:

**.2.6.2**

( )

1967

(1977)

.(2.2)

.(1998 )

. (1998 )

:2.2

		1
		2
		3
		4
		5

1967

150

1.8

45

15000

.(1998 )

:

**.3.6.2**

1979

.(1990 )

( )

( )  
4000 1981  
(1996 ) 4015 1992  
( ) 7.2

( -2002 ). 20 1967

1967

26

( -2005 , ).

1904

( )

11) ) 19 34 ( 6081 ( ) ( 23) ( )  
 (-2005 ) ( 3

(1.2) (1996 ) 1978- 1967

1967

12

.(1998 )

**1.7.2. محافظة أريحا:**

12 42.764 <sup>2</sup> 545 )  
 .(-2004 )

5000 2000

%1.7

%10.4 <sup>2</sup> 15.1 2000

1995 2000 - 1995

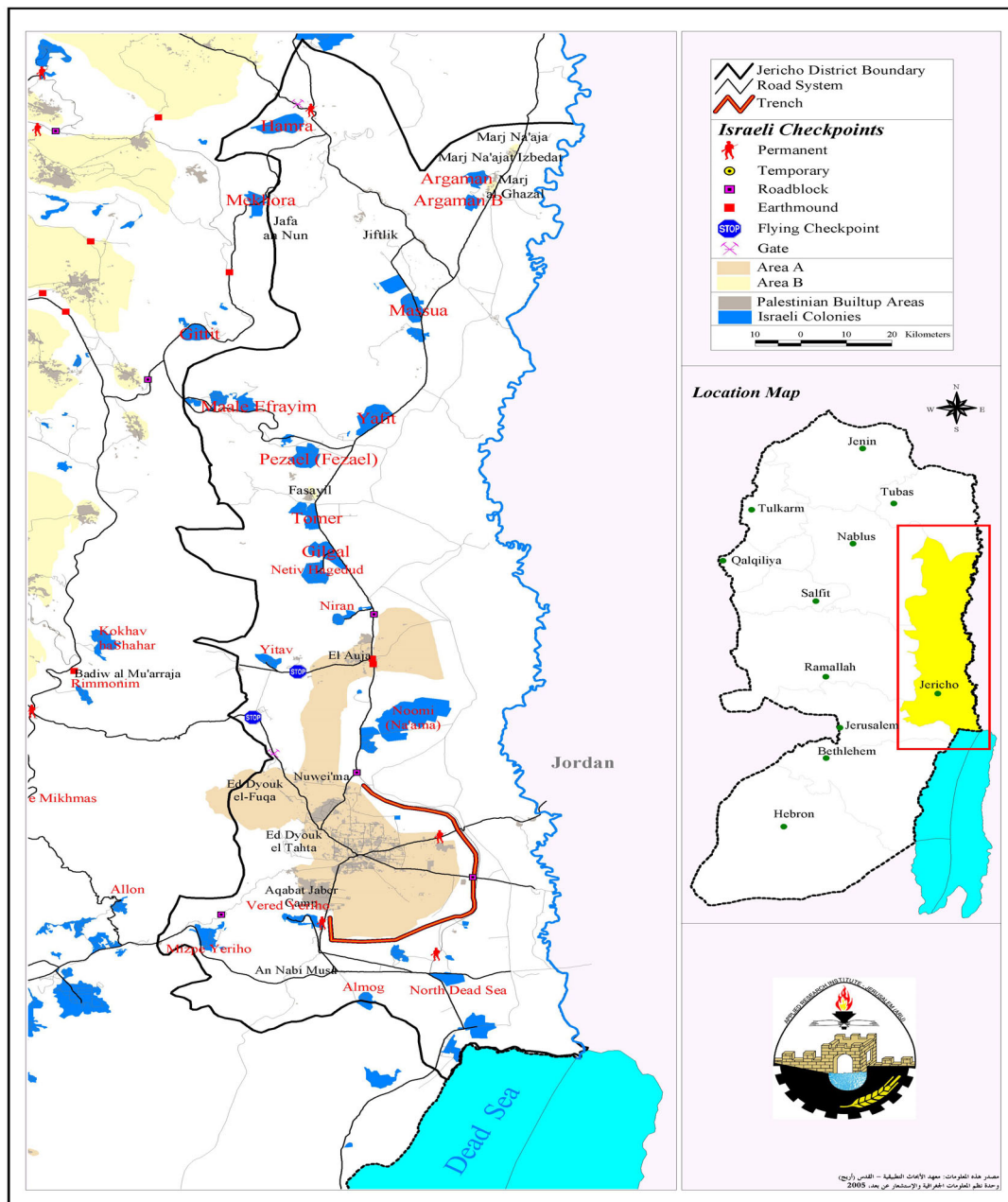
1995 %6 11  
<sup>2</sup> 3.6  
 ( )  
 %44 25 11  
 ) ( )  
 7  
 6 ( )  
 .(2004 )

1970  
 ( 1976- 1967)  
 11  
 19 23 (2004 ) .  
<sup>2</sup> 22,899 4,898  
 1989 % 2.6 <sup>2</sup> 63.114  
 % 3.6 2003-1997  
 ( -2004 ) 2003

%11.6  
 ) .  
 .(2002

)  
 ( ) (

(3.2) .(2.2)



.( -2005 )

:3.2



( -2006 ) :4.2

( -2005 ) :3.2

	( )	
0.12	73623	
9.365	57	-
2.471	1504	
1.125	685	
0.016	10057	
0.036	22114	
3.77	23	
0.58	358051	
0.01	8437	
0.07	42831	
0.04	25374	
2.04	1244	
0.1	64626	
19.743	608626	

: .2.7.2

23 47.360  
 .(-2004 )<sup>2</sup> 661  
 1.183 11 15  
<sup>2</sup> 11.016 2 7,707  
 ( -2004 ). 2004

. %77

( 1976– 1967)

%2.1 %0.7 2003  
 .(5.2) .(2004 ) 2003 1989

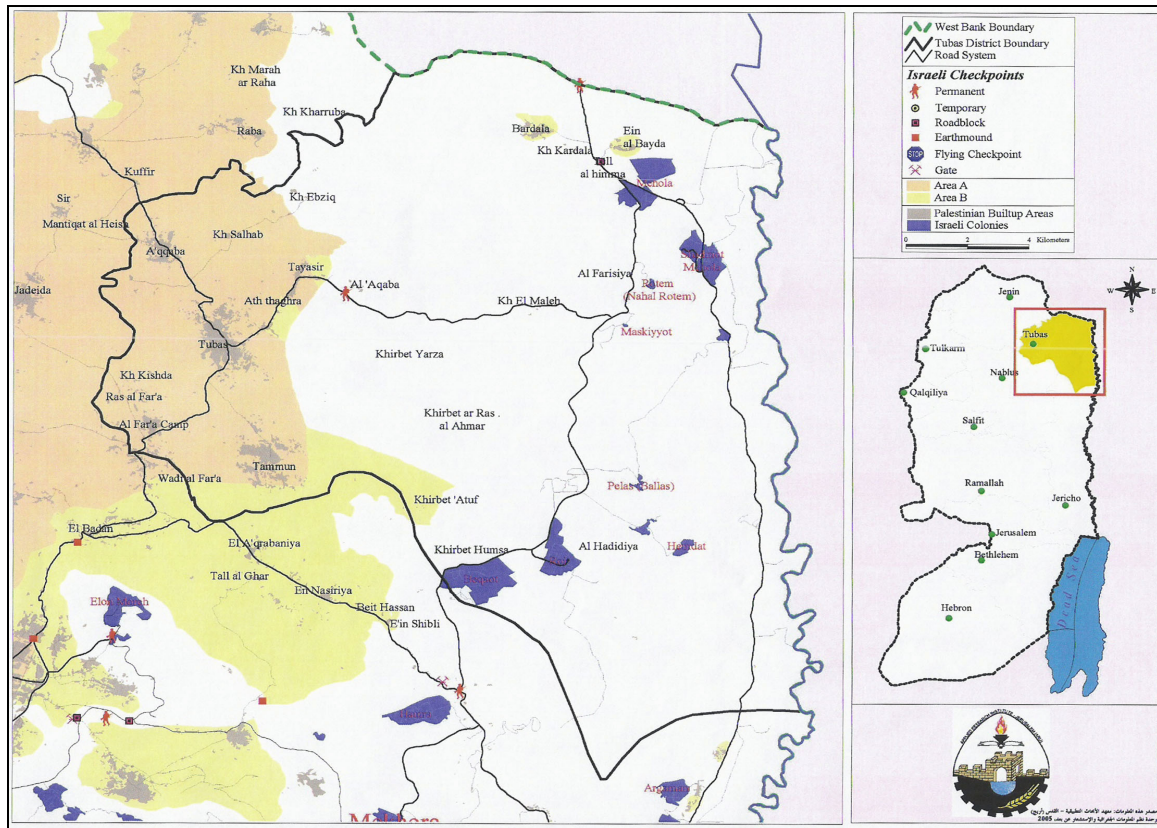
200  
 (4.2) ..  
 (3.2)



.( -2006 ) :5.2

.( -2005 ) :4.2

	( )	
0.271	99246	
0.006	2397	
0.005	1859	
0.043	15754	
0.020	7385	
0.0001	49	
0.082	30232	
0.017	6246	
0.327	119804	
0.192	70364	
0.0002	94	
0.034	12451	
0.965	365881	

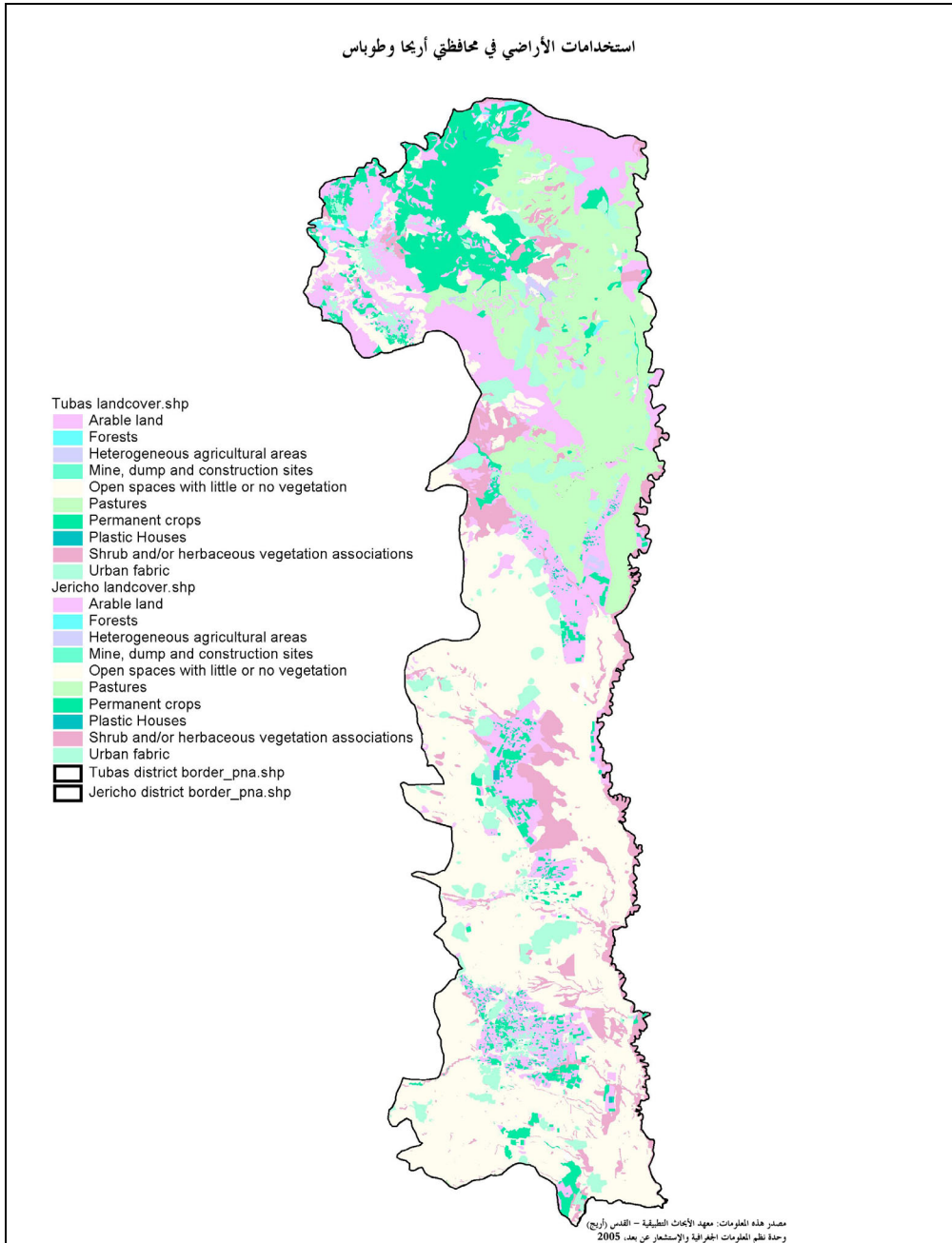


.( -2005 )

:6.2

(7.2)

استخدامات الأراضي في محافظتي أريحا وطوباس



.( -2006 ) .

:7.2

---

1.3

1995

1/15

.(1997 )

1995

.(1997 )

2.3

- 
- 
- 
- 
- 
- 

3.3

:(1997 )

- 
- 
-

•

•

4.3

30

(1997 )

5.3

(1996 )

:

•

:

•



: .2.7.3

(1997 ) :

•

•

.(2.3)



(1997)

:1.3

( -2006 )

: .3.7.3

(1997 ) :



) (1999)

:2.3

.( -2006

8.3

: 1.8.3

.(3.3)

: 2.8.3

1997/11/6

.(4.3)



:3.3

.( -2006 ) 1998

)

(

(5.3)



) (2001)

:4.3

.( -2006



1.4

,2006 2005

2.4

(1.4 ) , 9

( : : 3 : )

: 1.4

7		1
7		2
8		3
11		4
16		5
8		6
11		7
24		8
10		9
102		

**3.4**

**4.4**

0.80

5.4

SPSS

T .( )  
(One Way Analysis Valiance)

Scheffe

6.4

2005

( )

2006

: ( )

: .1.6.4

( ) (4233 )  
(556)

(1200)

(700)

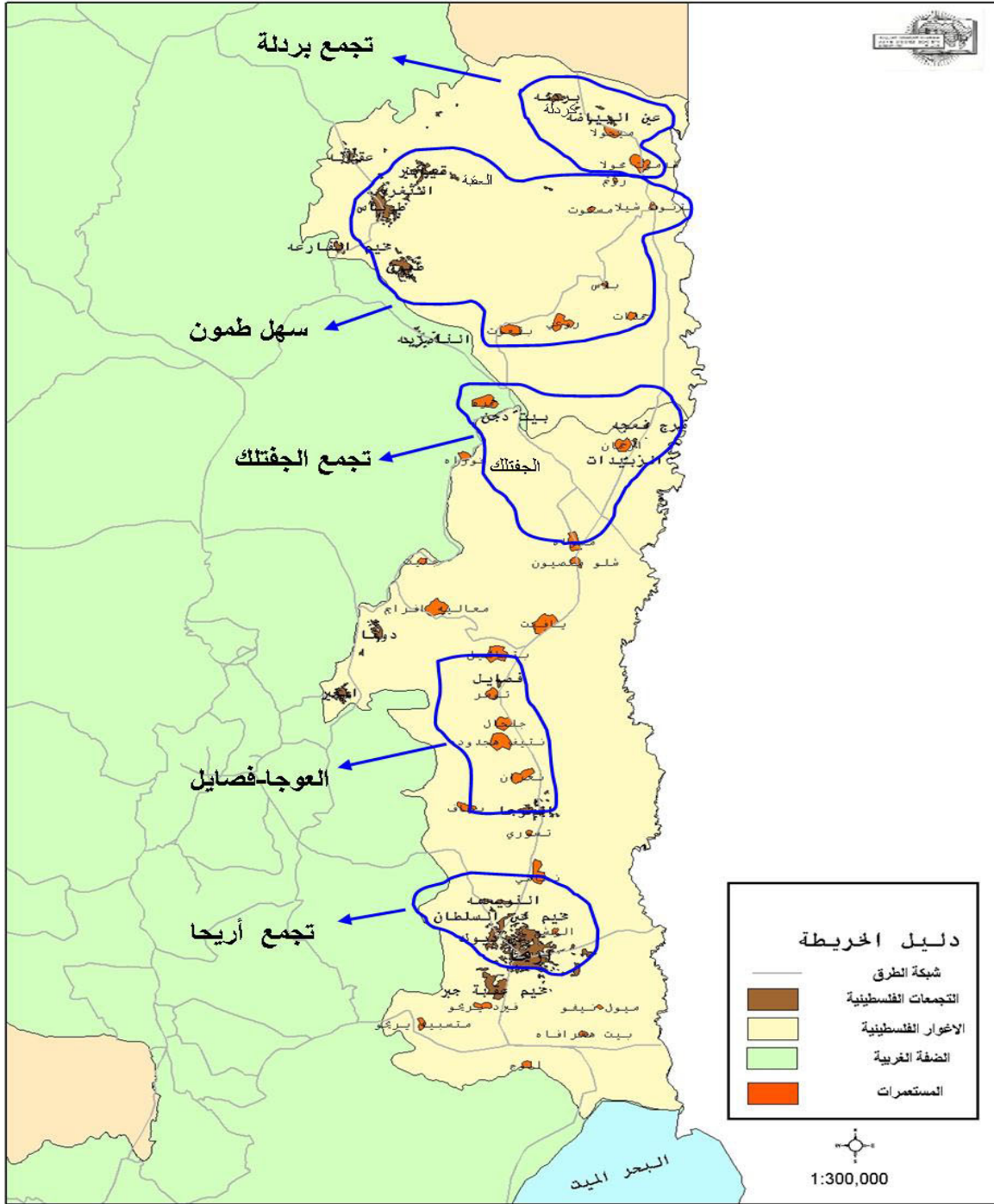
(276)

(1.4) .(1500)

: .2.6.4

(300)

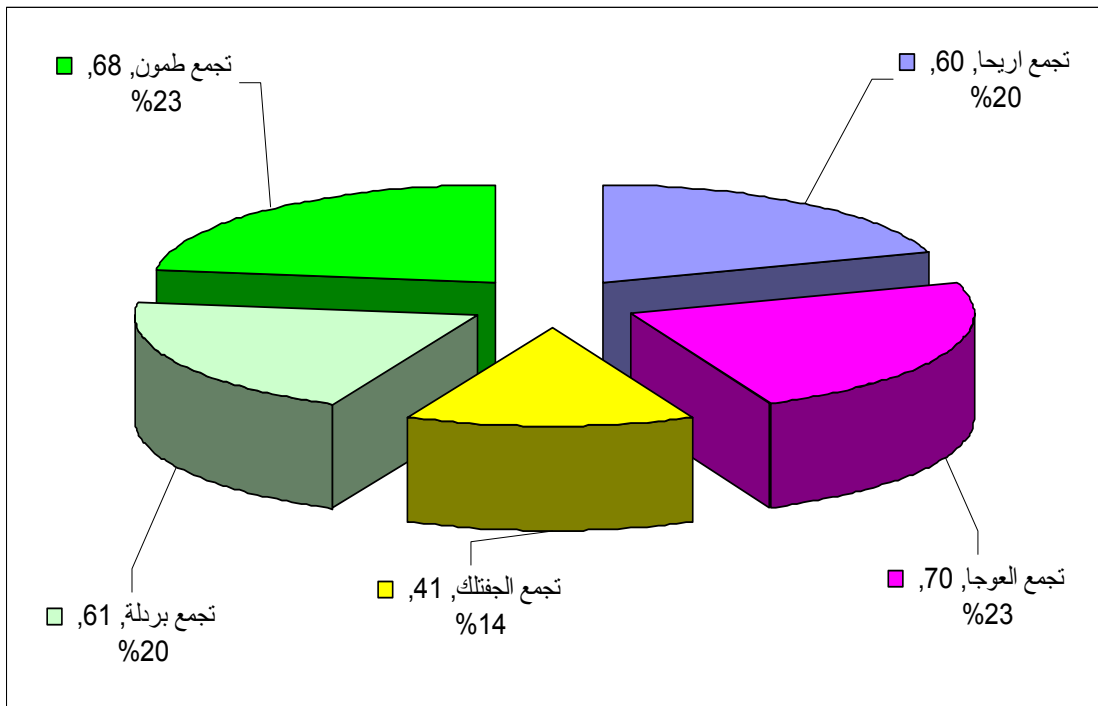
7.4



:1.4

( , 2005).

(2.4)



:2.4

(%7.7)

(%92.3)

(%88.7)

(%11.3)

(3.4)

(50-41)

(40-31)

(30-21)

%10

(%34,3)

(%21,7)

9-7

(%27,7)

6-4

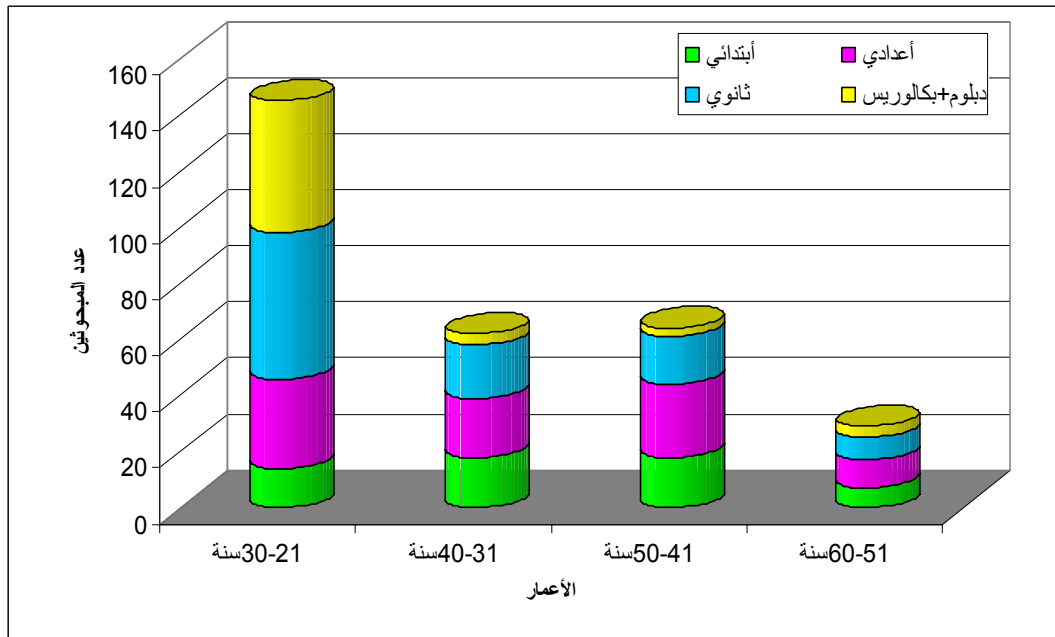
(%5,3)

15-13

(%11)

12-10

4



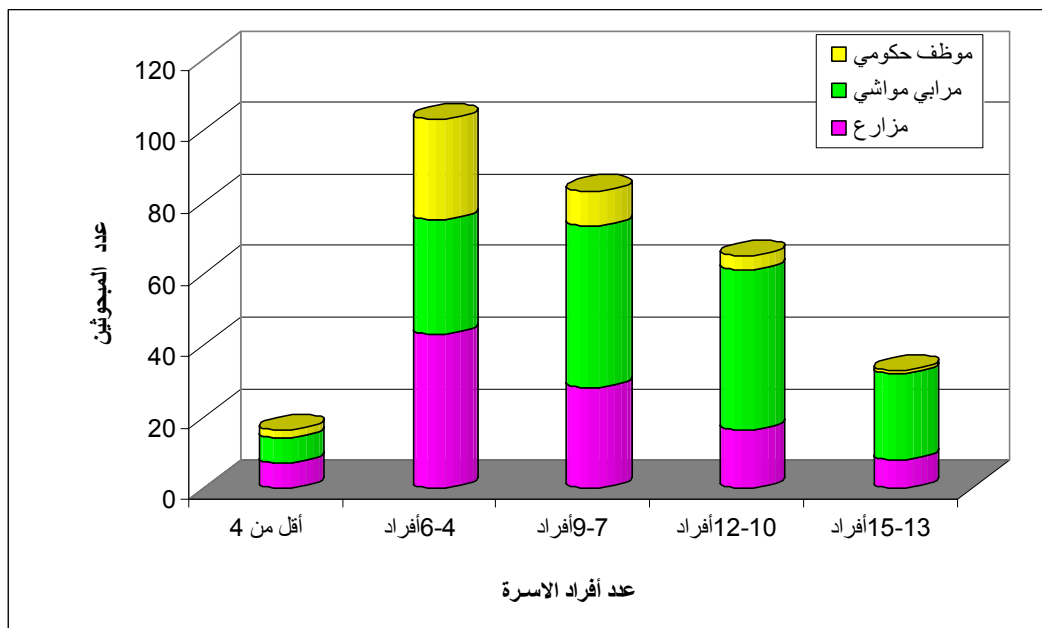
: 3.4

%51

%15

%34

.(4.4)



:4.4

(6-4)

(12-10)

( 15-13)

%22

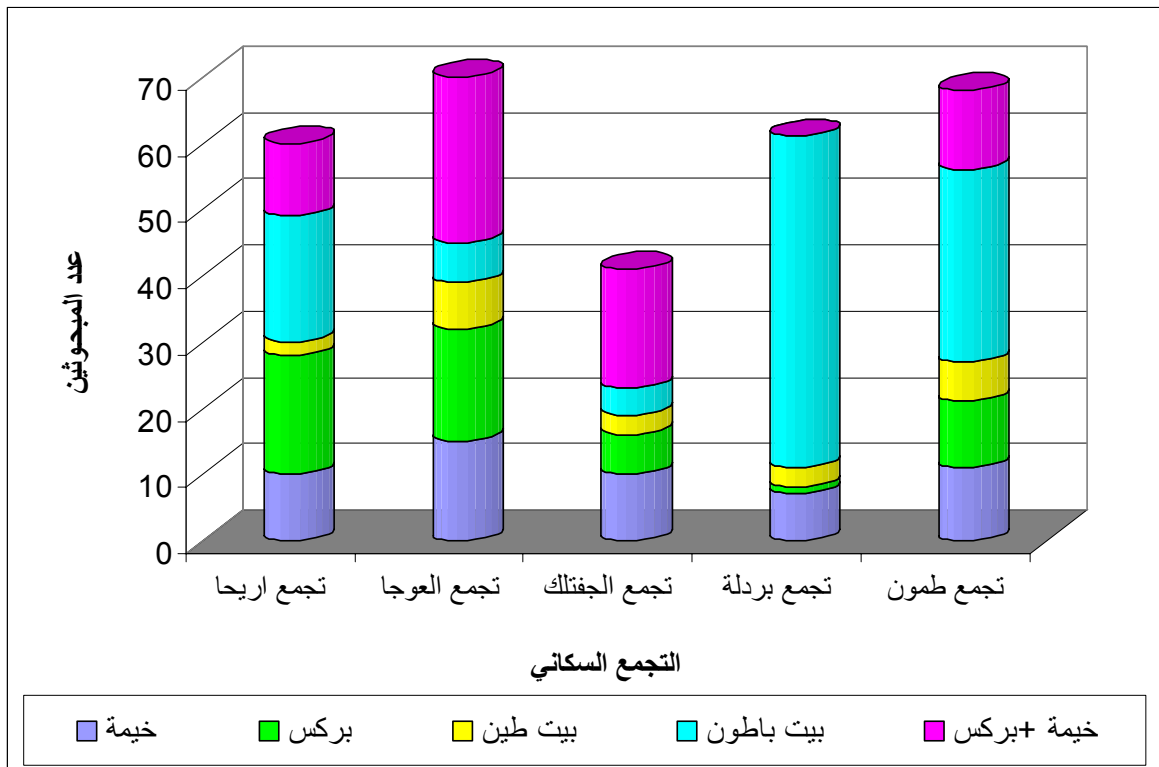
%17.3

%36

%17.7

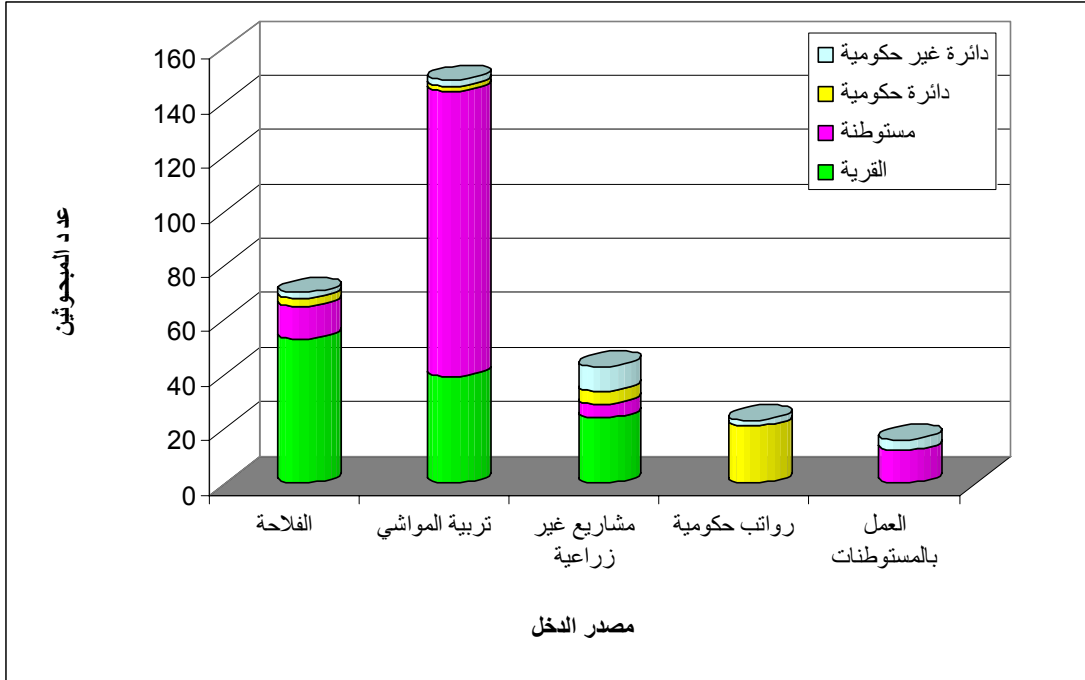
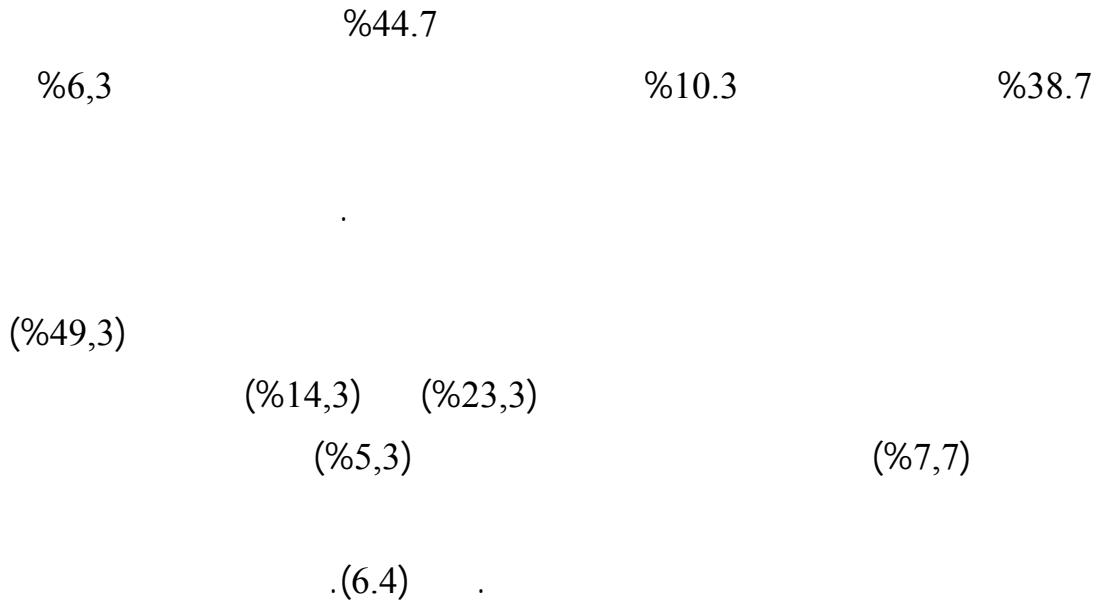
.(5.4)

%7



:5.4

.C



:6.4

%43

)

(

%16.3

%22.7

%3.7

%4

%7.3

%3

.(2.4 )

:2.4

<b>129</b>	26	12	30	38	23	
<b>68</b>	9	27	5	11	16	
<b>9</b>	6	2	0	0	1	
<b>11</b>	6	5	0	0	0	
<b>12</b>	3	4	2	1	2	
<b>22</b>	5	0	0	10	7	
<b>49</b>	13	11	4	10	11	
<b>300</b>	<b>68</b>	<b>61</b>	<b>41</b>	<b>70</b>	<b>60</b>	

( )

(%24.3)  
 -1501) ( 1000-500) (%23.3) 2000  
 1500-1001 (%19.7) 500 (%21.3) ( 2000  
 . (%11.3)

1000-500 (%22.3) 500 (%32.3)  
 (%9.3) 2000 (%17) 2000-1501 (%19)  
 .(3.4) . 1500-1001

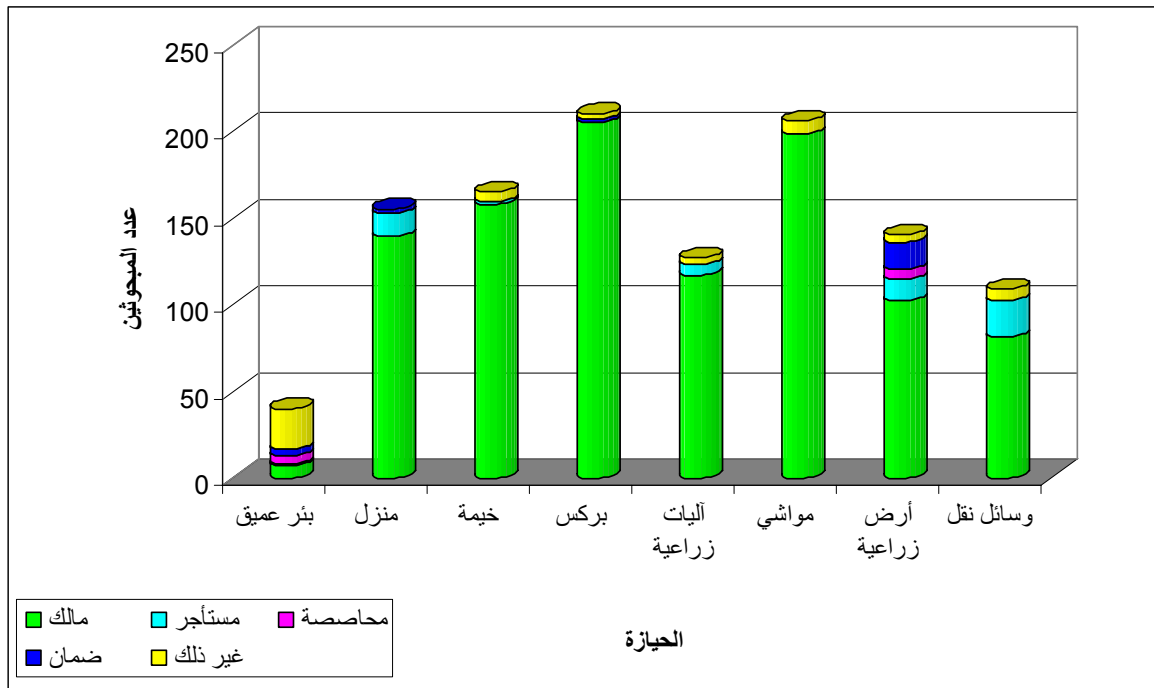
:3.4

	( )					( )
	2001	2000-1501	1500-1001	500-1000	500	
<b>59</b>	2	0	0	9	48	500
<b>70</b>	7	5	1	43	14	500-1000
<b>34</b>	1	2	25	2	4	1500-1001
<b>64</b>	7	47	0	3	7	2000-1501
<b>73</b>	34	3	2	10	24	2001
<b>300</b>	<b>51</b>	<b>57</b>	<b>28</b>	<b>67</b>	<b>97</b>	

500

8.4

(7.4).



:7.4

(%5.6)

:

.	(%1.3)	(%1.7)	(%0.3)	(%2.3)
.				
	(%51.7)			
(%46.3)				
			(%4.7)	
	(%55)			
(%52.7)				
			(%2.3)	
			(%70)	
	(%1.7)		(%68.3)	
				(%42.3)
	(%39)			
				(%3.3)
(%68.7)				
		(%2.7)		(%66)
(%45.3)				

(%5.3)

(%4.3)

(%34)

(%1.7)

(%35)

(%7)

(%27)

(%1)

**9.4**

:

•

•

•

•

•

90



1.5

:

(%16)

(%75)

•

(%75)

•

(%46)

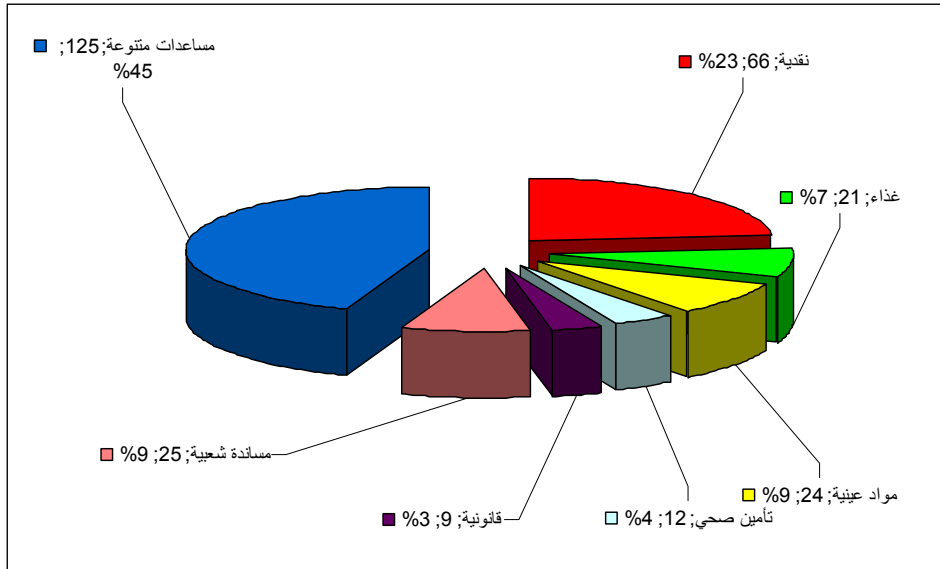
•

(%75)

•

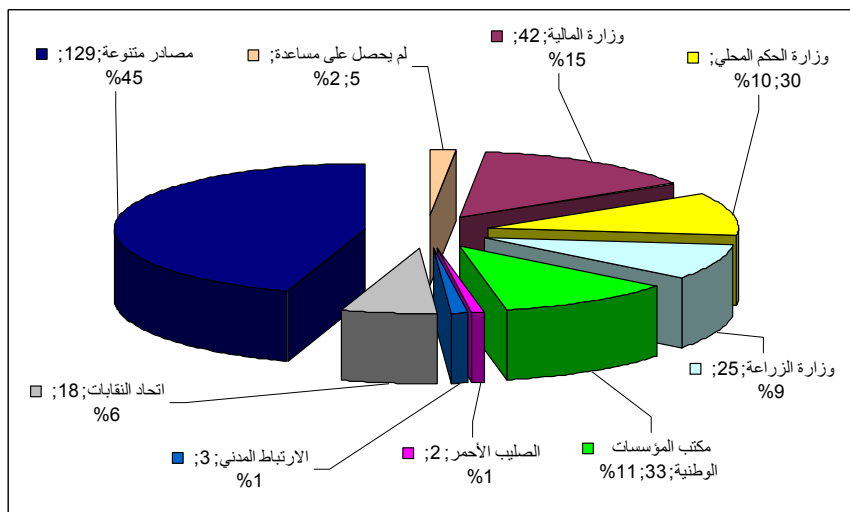
•

(1.5).



:1.5

( 2.5 )



: 2.5

(%45)

•

(%79)

•

(%84)

•

(%82)

•

(%68)

•

:

•

•

•

•

•

•

•

:

.1.1.5

.(1.5)

T/F :1.5

	<b>T/F</b>		
0.000	8.258		<u>1</u>
0.291	3.607		2
0.120	2.436		3
0.002	5.239		4
0.016	3.087		5
0.079	2.117		6
0.210	1.570		7
0.004	3.897		8
0.002	5.111		9
0.045	2.465		10
0.034	2.309		11
0.000	7.762		12
0.010	3.364		13

:

0.05

(0.000) :  
(0.002) (0.004) (0.016) (0.002)  
(0.034) (0.045)  
. (0.010) (0.000)

.05

1000-500

. 2000-1501

500

1000-500

2001

. 2000-1501

:

**.2.1.5**

/

.(2.5)

:

0.05

T/F :2.5

	<b>T/F</b>		
0.000	7.367		1
0.052	3.793		2
0.004	1.630		3
0.010	3.878		4
0.014	3.182		5
0.967	0.141		6
0.210	1.150		7
0.219	1.446		8
0.054	2.541		9
0.228	1.418		10
0.466	0.940		11
0.000	9.738		12
0.439	0.944		13

:

(0.014)

(0.010)

(0.004)

(0.000)

(0.000)

. 0.05

:

**.3.1.5**

.(3.5)

:

0.05

(0.000)

:

(0.000)

(0.020)

(0.001)

(0.011)

(0.001)

(0.000)

(0.001)

:3.5

	<b>T/F</b>		
0.000	6.675		<u>1</u>
0.244	1.711		2
0.203	0.245		3
0.395	0.996		4
0.011	3.307		5
0.256	1.337		6
0.001	6.684		7
0.020	2.969		8
0.000	7.611		9
0.000	7.070		10
0.001	3.707		11
0.072	2.170		12
0.001	4.658		13

-1501 1000-501 500

1500-1001

. 2000

:

**.4.1.5**

.(4.5)

:

0.05

T/F :4.5

	<b>T/F</b>		
0.002	4.425		<u>1</u>
0.046	0.049		2
0.862	0.968-		3
0.656	0.538		4
0.000	6.184		5
0.541	0.777		6
0.002	6.190		7
0.000	9.671		8
0.000	8.481		9
0.140	1.744		10
0.000	6.335		11
0.000	5.816		12
0.000	8.897		13

(0.002) (0.000) (0.046) (0.002)  
(0.000) (0.000) (0.000) (0.000)  
(0.000) (0.000)

2000-1501

. 1500 -1001 500

2000-1501

. 2001 1500-1001 1000-500 500

. 2000-1501

:

.5.1.5

.(5.5)

:

0.05

T/F :5.5

	<b>T/F</b>		
0.000	5.229		<u>1</u>
0.000	1.981-		2
0.229	0.609-		3
0.071	2.367		4
0.078	2.128		5
0.028	2.757		6
0.732	0.312		7
0.148	1.708		8
0.280	1.284		9
0.614	0.669		10
0.001	4.094		11
0.029	2.743		12
0.028	2.755		13

(0.001)

(0.028)

(0.000)

(0.000)

(0.028)

(0.029)

2000-1501

1500 -1001

500

2000-1501

2001 1500-1001 1000-501

:

**.6.1.5**

.(6.5)

, , :  
0.05

:  
,(0.000) (0.033) (0.004) (0.000)  
,(0.000 ) ,(0.001 ) (0.021 )  
,(0.000) ,(0.000)

T/F :6.5

	<b>T/F</b>		
0.000	8.089		<u>1</u>
0.947	1.118		2
0.004	0.956		3
0.137	1.857		4
0.033	2.654		5
0.937	0.203		6
0.000	8.695		7
0.021	2.947		8
0.001	5.589		9
0.000	5.188		10
0.087	1.862		11
0.000	6.322		12
0.000	5.428		13

, 1000- 500

2000-1501

1500-1001

. 2000-1501

2000-1501

. 500

:

.7.1.5

.(7.5 )

T/F :7.5

	<b>T/F</b>		
0.000	7.482		<u>1</u>
0.056	1.288-		2
0.065	0.743		3
0.616	0.599		4
0.135	1.769		5
0.502	0.838		6
0.162	1.832		7
0.261	1.325		8
0.043	2.742		9
0.002	4.360		10
0.215	1.400		11
0.120	1.847		12
0.130	1.793		13

,0.05

:

,0.05

(0.002)

(0.000)

.

,

,

,

,

.

,

.

.

:

**.8.1.5**

.(8.5)

:

0.05

:

(0.031)  
(0.000)

(0.009)

(0.026)  
(0.003)  
(0.003)

(0.027)

(0.010)

(0.000)

.

T/F :8.5

	<b>T/F</b>		
0.000	9.419		<u>1</u>
0.027	3.128-		2
0.169	3.081		3
0.026	3.124		4
0.009	3.423		5
0.145	1.724		6
0.031	3.515		7
0.010	3.415		8
0.003	4.639		9
0.088	2.047		10
0.093	1.829		11
0.000	10.644		12
0.003	4.102		13

-1501 500 1000-500 . 2000  
-1501 1000-500 2000  
2000 2000  
. 2000-1501  
:  
**.9.1.5**

. (9.5)

T/F :9.5

	<b>T/F</b>		
0.000	9.090		1
0.992	2.014-		2
0.547	1.972		3
0.010	3.888		4
0.002	4.255		5
0.264	1.315		6
0.202	1.606		7
0.008	3.551		8
0.000	6.828		9
0.060	2.290		10
0.439	0.980		11
0.000	7.122		12
0.000	6.715		13

:

0.05

:

(0.000)

(0.008)

(0.002)

(0.010)

(0.000)

(0.000)

(0.000)

0.05

(50-41)

( 40-31)

40-31

1000-501

2000-1501

500

1000-501

2000-1501

1000-501

**2.5**

(10.5)

:

(2.44)

(10.5)

(1.5)

:10.5

:

0.59	2.69		B1
0.58	2.68		B2
0.61	2.65		B3
0.65	2.56		B4
0.61	2.55		B5
0.75	2.54		B6
0.64	2.54		B7
0.64	2.53		B8
0.63	2.53		B9
0.63	2.53		B10
0.59	2.34		B11
0.63	2.31		B12
0.63	2.30		B13
0.77	2.10		B14
0.75	1.92		B15
0.79	1.63		B16
<b>0.57</b>	<b>2.44</b>		

.(11.5)

0.05

T

T

:11.5

0.072		8	0.061		1
0.576		9	0.634		2
0.479		10	0.482		3
0.012		11	0.569		4
0.011		12	0.776		5
0.015		13	0.337		6
			0.927		7

(0.011)

(0.012)

(0.015)

500

1000-500

2.648

2.328

0.05

**3.5**

.(12.5)

:12.5

		:	
0.509	2.780		C1
0.580	2.720		C2
0.671	2.536		C3
0.733	2.273		C4
0.718	2.229		C5
0.542	2.118		C6
0.649	1.793		C7
0.684	1.728		C8
<b>0.377</b>	<b>2.313</b>		

(2.313)

:

.

•

.

•

.

.

.

•

•

.

.

.

.(13.5)

:

0.05



$$0.05 = \alpha$$

$$0.05 = \alpha$$

**4.5**

.(14.5)

(2.045)

)

) ( ) (

:14.5

			:
0.72	2.55		R1
0.84	2.34		R2
0.79	2.34		R3
0.78	2.29		R4
0.90	2.13		R5
0.85	2.13		R6
0.73	2.00		R7
0.69	1.89		R8
0.66	1.78		R9
0.69	1.76		R10
0.71	1.74		R11
<b>0.55</b>	<b>2.04</b>		

: •

: •

- :
- :
- :
- :

(15.5).

:

0.05

تأثير لتلك المتغيرات على إجابات

(0.001)

:

(0.002)

(0.014)

(0.016)

(0.003)

(0.031)

(0.001)

T :15.5

0.014		0.000	
0.002		0.198	
0.001		0.003	
0.188		0.442	
0.107		0.395	
0.031		0.077	
0.014		0.016	

2.095

1.917

1.9515

2.381

0.05  $\alpha$

2.347

1.830

2.347

.1.830

5.5

.(16.5)

(2.928)

:

•

•

•

•

)

•

.(

•

)

•

.(

:16.5

0.173	2.983		T1
0.182	2.979		T2
0.251	2.962		T3
0.228	2.959		T4
0.257	2.952		T5
0.234	2.949		T6
0.261	2.949		T7
0.286	2.949		T8
0.284	2.942		T9
0.306	2.936		T10
0.316	2.912		T11
0.359	2.902		T12
0.366	2.895		T13
0.382	2.862		T14
0.405	2.856		T15
0.422	2.855		T16
0.414	2.845		T17
0.435	2.796		T18
0.492	2.774		T19
0.482	2.767		T20
0.598	2.666		T21
0.696	2.601		T22
0.690	2.599		T23
0.909	2.402		T24
<b>0.283</b>	<b>2.928</b>		

.(17.5)

:

.0.05

T :17.5

0.624		8	0.155		1
0.605		9	0.001		2
0.409		10	0.492		3
0.249		11	0.49		4
0.357		12	0.356		5
0.111		13	0.181		6
			0.756		7

:

(%57.3)

(%18.7)

(%31) :

(%1.3)

(%20.7)

.

(%6.7)

(%5)

(%1.7)

(%29.3)

(%56)

(%9)

(%12.3)

(%24)

(%3.7)

(%3.7)

(%9.7) :

(%4)

(%3.3)

(%24)

(%3.4)

(%3.3)

(%16)

(%17.3)

(%3.3)

(%5.7)

(.2.5)

(%20.7)

(%1)

(%14.6)

(%54.7)

(%16.7)

(%23) :

(%3)

(%5)

(%5.3)

(%62.3)

(%31.3) :

(%3)

(%4.3)

(%19)

(%5)

(%47.7)

:

(%9.3)

(%21.7)

(%2)

(%2)

(%8.7)

**7.5**

( )

120

15-12





1.6

:

•

:

○

○

○

○

○

○

○

•

( )

:

( )

:

( )

:

:

•

•

•

•

•

•

•

## 2.6

•

○

○

○

○

•

)

(

- 
- 
- 
- 
- 
-

.( ) : (1985) . •  
 . 1984-1977  
 . : (1994) . •  
 . : (1998) . •  
 .1998/05/21  
 . : (2002) •  
 . : (2004) •  
 . : (-2005) •  
 . : (-2005) •  
 . : (-2005) •  
 . : (-2006) •  
 . : (-2006) •  
 . : (-2006) •  
 . : (-2006) •  
 . : (-2006) •  
 . : (-2006) •  
 . : (-2006) •  
 . : (2004) . •  
 .( ) 1967  
 . : (-2002) . •  
 . : (-2002) . •  
 -11-17 ( )  
 . 2001  
 . 36-28  
 ( ) : (-2005) . •  
 - : (-2005) . •

: . : (2002) . •  
 2001/11/12 ( )  
 -21 .  
 .22  
 ( -2004) •  
 2004  
 ( -2004) •  
 2004  
 : (2004) . •  
 : (2004) •  
 : (2005) •  
 : (1998) . •  
 .1998/03/19  
 : (1999) . •  
 : (1998) . •  
 .1998/03/19 :  
 " " : (2005) •  
 : ( -2006) •  
 : ( -2006) •  
 " " " : (1990) . •  
 : (1998) . •  
 .1998 19  
 : (1988) . •  
 1984- 1977



. : (2005) - •  
 . : (2006) - •  
 . : (2006) - •  
 . : (2005) •  
 . : (2004) •  
 . : (2006) •  
 . : (2006) •  
 . : (2002) •  
 " : (1996) •  
 : (1998) •  
 " : (2004) •  
 - : (1997) •  
 . 1996-1949  
 2000-1967 - : (2001) •  
 (2000-1967) : (2001) •  
 . ( )  
 : (1990) •  
 : (2004) •  
 -  
 : (1998) •  
 . 1998/03/19  
 : (2005) •  
 . 1967 : (2000) •  
 : (2002) •  
 " : (2005) •  
 -

(2005 )

: 1.1

-		
753		1
378		2
1316		3
4322		4
884		5
3938		6
1144		7
1999		8
800		9
949		10
20051		11
6230		12
<b>42764</b>		

(2005 )

:2.1

-		
320		1
210		2
180		3
203		4
5967		5
254		6
1550		7
163		8
1062		9
43		10
29		11
62		12
76		13
17		14
91		15
23		16
53		17
15809		18
2356		19
10261		20
689		21
5650		22
2301		23
<b>47360</b>		24

.(1996 ) ( )

:3.1

1996/12/6

1997

( )

.(1997 )

4.1

:

1997/3/7

.

(2002

)

:1.2

			/			
		142	472	1977		1
		179	587	1969		2
		767	403	1971		3
		0	478			4
		50	68	1980		5
		75	53	1983		6
		0	75	1983		7
		124	1071	1973		8
		0		1970		9
		1245	959	1978		10
		128	636	1979		11
		0	639			12
		140	460	1969		13
		136	4820	1979		14
		61	460	1977		15
		183	1004	1975		16
		276	1330	1972		17
		150	1450	1980		18
		176	2147	1969		19
		321	990	1978		20
		0	38			21
		0	400	1977		22
		50	470	1976		23

)

:2.2

( 2002

			/			
		168	2337	1972		1
		50	130	1975		2
		292	90	1982		3
		507	50	1986		4
	+	345	1756	1969		5
		102	100	1975		6
		153	1511	1978		7
		100	73	1984		8
		459	1318	1983		9

:3.2

(1997 )

•

:

○

.

:

○

.( )

○

:

•

○

○

○

:

:

•

○

○

○

○

○

+

○

.

•

.

•

.

•

. + +

•

- 
- 
- 
- 
-

)

:1.3  
(2002)

2002 (7)

(1)

"

"

.1

.

.2

.

.3

.

.4

(2)

(3)

.

(4)

(5)

2002/6/5:

(2005 ) : 2.3

.1

.2

.3

.4

- 
- 
- 

.5

.6

.7

.8

.9

.10

.11

.(2006 ) 2002-1996 :3.3

: 1996/5/20 .1

: 1996/12/26 .2

:1997/5/13 .3

:1997/5/15 .4

:1997/6/13 .5

97/7/25 .6

:1997/7/21 .7

:97/8/31 .8

:97/9/29 .9

:97/12/22 .10

:98/3/20 .11

2500

:1998/5/27 .12

:98/6/2 .13

:1998/6/6 .14

:99/5/22 .15

:2000/1/13 .16

:2003/8/7 .17

: :4.3

- . 1995/1/9 .1
- .2
- . 1996/12/22 .3
- . 1998/5/21 .4
- .1998/2/28 ( ) .4
- ( ) .5
- .2002/12 .6
- ( ) .6
- . 1996/4/15 .7
- ( ) .7
- . 1999/6/5 .8
- .(1997 ) .8
- .2000 - ( ) .9

- (2002-1995)

: 5.3

- -1997

•

•

•

•

•

( )

-



25

( )

.1998/5/21

250

1998

1997

: 1.4

:

...

- :

استراتيجيات اللجنة الوطنية لمواجهة الاستيطان و دورها في التصدي للاعتداءات  
الإسرائيلية في محافظة أريحا و الأغوار

-

,

,

.

:

/

"

"

تعتبر البيانات التي تشملها هذه الاستمارة غاية في السرية، ولا يتم استخدامها إلا لإغراض البحث العلمي

:						
<input type="checkbox"/>	<input type="checkbox"/>					.IDN
<input type="checkbox"/>	<input type="checkbox"/>	.5	.4	.3	.2	.1
		.9	.8	.7	.6	.5
		.13	.12	.11	.10	.9
		.16	.15	.14	.13	.12
<input type="checkbox"/>		.2				.1
<input type="checkbox"/>		.5	.4	.3	.2	.1
<input type="checkbox"/>		40-31	.3	30 -21	.2	20
		60 -51	.5	50	41	.4
<input type="checkbox"/>		-3	.4	.3	.2	.1
				-5	-4	
	<input type="checkbox"/>	(15-13)	.4	(12-10)	.3	(9-7)
				(6-4)	.1	(18-16)
				.5		

:						
<input type="checkbox"/>		.4	.3	.2	.1	W1 . نوع العمل
				/	.5	
<input type="checkbox"/>		.3	.2	.1	.4	W2 . نوع السكن
		.6	.5	.4	.3	
		. غير ذلك/ حدد.....				
<input type="checkbox"/>		.3	.2	.1	.4	W3
		/	.5	.4	.3	
		/ .....				.6
<input type="checkbox"/>		.3	.2	.1	.4	W4
			.5	.4	.3	
		.7	.6	.5	.4	
		.....				
<input type="checkbox"/>		.3	.2	.1	.4	W5
		.6	.5	.4	.3	:
		(.....)				.7

<input type="checkbox"/>	.4 1500-1001 .3 1000-500 .2 500 .1	.W6
	2001 .5 2000 -1501	
<input type="checkbox"/>	.4 1500-1001 .3 1000-500 .2 500 .1	.W7
	2001 .5 2000 -1501	

: الحيازة					
(X)					
<input type="checkbox"/>	<input type="checkbox"/>	<input type="checkbox"/>	<input type="checkbox"/>	<input type="checkbox"/>	.1
<input type="checkbox"/>	<input type="checkbox"/>	<input type="checkbox"/>	<input type="checkbox"/>	<input type="checkbox"/>	.2
<input type="checkbox"/>	<input type="checkbox"/>	<input type="checkbox"/>	<input type="checkbox"/>	<input type="checkbox"/>	.3
<input type="checkbox"/>	<input type="checkbox"/>	<input type="checkbox"/>	<input type="checkbox"/>	<input type="checkbox"/>	.4
<input type="checkbox"/>	<input type="checkbox"/>	<input type="checkbox"/>	<input type="checkbox"/>	<input type="checkbox"/>	.5
<input type="checkbox"/>	<input type="checkbox"/>	<input type="checkbox"/>	<input type="checkbox"/>	<input type="checkbox"/>	.6
<input type="checkbox"/>	<input type="checkbox"/>	<input type="checkbox"/>	<input type="checkbox"/>	<input type="checkbox"/>	.7
<input type="checkbox"/>	<input type="checkbox"/>	<input type="checkbox"/>	<input type="checkbox"/>	<input type="checkbox"/>	.8

:		
<input type="checkbox"/>	.1 ممتازة .2 متوسط .3 اسمع بها .4 لا اعرفها مطلقا	.H1
<input type="checkbox"/>	.1 ممتازة .2 متوسطة .3 ضعيفة .4 لا اعرف	.H2
<input type="checkbox"/>	.1 .2 .3	.H3
<input type="checkbox"/>	.1 .2 .3 .4	.H4
<input type="checkbox"/>	.1 ( ) .2 .3 .4 .5 .6 .7 .8	.H5
<input type="checkbox"/>	.1 .2 .3 .4 .5 .6 .7 .8	.H7

<input type="checkbox"/>	.3	.2	.1	<b>.H8</b>
<input type="checkbox"/>	.3	.2	.1	<b>.H9</b>
<input type="checkbox"/>	.3	.2	.1	<b>.H10</b>
<input type="checkbox"/>	.3	.2	.1	<b>.H11</b>
<input type="checkbox"/>	.3	.2	.1	<b>.H11</b>

1	2	3	(X)	:
				B1
				B2
				B3
				B4
				B5
				B6
				B7
				B8
				B9
				B10
				B11
				B12
				B13

				B14
				B15
				B16

				:
			(X)	
				C1
				C2
				C3
				C4
				C5
				C6
				C7
				C8

				:
			(X)	
				R1
				R2
				R3
				R4
				R5
				R6
				R7
				R8
				R9
				R10
				R11

				:
			: للاستيطان آثار سلبية واضحة على القطاعات	:
			(X)	التالية:
				T1

				T2
				T3
				T4
				T5
				T6
				T7
				T8
				T9
				T10
				T11
				T12
				T13
				T14
				T15
				T16
				T17
				T18
				T19
				T20
				T21
				T22
				T23
				T24
				T25

(X)						:	
( ) 6	5	4	3	2	1		
							E1
							E2
							E3
							E4
							E5
							E6
							E7
							E8
							E9
							E10

-

)

:(1.5)

.(2006

500.000

•

.2005

1997

500

•

:

•

:

○

:

○

:

○

.

:

○

:

○

:2.5

	+		1996/4/22
		/	4+
48			1996/6/13
		412	1996/7/20
		/	
	6+	4	1996/8/25
	10	+	+
			/
			1996/10/20
/			
1996/12/10			1996/12/8
		10	1996/12/12
		/	
		/	1997/2/26
	/	4	1997/4/21
			1997/4/21
			/
	6+	4	1997/5/13

			/	+
			/	1997/5/17
	4+	6	1997/5/22+8	+
			/	
		6	1997/6/5	/
			1997/7/3	
		/		
	4+	3	1997/7/18	
			3	
	10+	6	1997/7/19	
	3		10	
	/		10+	
	+	4	1995/6/14	
			3	
	10+	20	1997/7/22+21	
	3		20	
48		+	4	1997/7/22
			/	
	10+	10	1997/8/8	
		/	3	+
	10+	10	1997/8/29	
			/	

	7+	3+	1997/8/29 /
			1997/8/31+30
			1997/9/1 ( 5000)
	/	11	1997/10/16
	6+	6 /	1997/10/20 +
		/ 5	1997/11/14
		/ 4	1997/11/14
			1997/11/12 90
		/	1997/11/17
			1997/11/25 /
		4+ 4 /	1997/12/4 +
70 /90	1997/12/23	70 /90	1997/12/23
			1998/3/19

48	/
	1998/4/1
	1998/4/20 /
	1998/5/4 /
	3+ 5 1998/5/25 / +
	/ 1998/5/27
	+ 5 1998/5/28 /
	/ 5 1998/7/6
	1998/7/13 /
	3+ 3+ 1998/7/20 / +
	1998/7/21 /
	6 1998/8/28 / / 6+
	1998/8/28 / ( 5000)

	5+	5	1998/9/25	
	/	/		+
	/		1998/12/29	
		/	1999/4/20	
	/		1999/5/28	
	/		1999/7/9	
			1999/7/26	
		/ 3	2000/3/13	
	/ 4+	5	2000/5/20	
			2000/5/31	
			/90	
	/ 3+	3	2000/7/30	
	7+	3	2000/9/22	
			/	+
	/	7	2001/5/4	
			/	
		+ 5	2001/6/2	
			/	

	/ 4	2001/6/15
		2001/7/28 /( 20)
	/	2002/5/20
	/	2002/6/3
	10 + 10	2002/9/3
	/	/
	/ 3	2003/5/21
	/ 3	2003/6/11
	/ + 5	2005/5/28
	20	2005/5/28
	/	
		2005/7/5
		/
+	/ 3+2	2005/7/5
	8	2005/7/5
+ +		/
	4	2005/9/8
+ +	/	4+
	7	2005/9/8

	3+	2005/9/8 /
--	----	---------------

9	.....1976		1.1
17	.....		2.1
18	.....		3.1
19	.....		4.1
19	.....		5.1
39	.....		1.2
42	.....		2.2
49	.....		3.2
51	.....		4.2
63	.....		1.4
71	.....		2.4
72	.....		3.4
79	.....	F/T	1.5
81	.....	T/F	2.5
83	.....		3.5
85	.....	T/F	4.5
88	.....	T/F	5.5
90	.....	T/F	6.5
92	.....	T/F	7.5

94		T/F	8.5
	.....		
95		T/F	9.5
	.....		
98			10.5
	.....		
99			11.5
	.....		
101			12.5
	.....		
102			13.5
	.....		
104			14.5
	.....		
106		,	15.5
	....		
109			16.5
	.....		
111		T	17.5
	.....		

6	.....( )	1.1
27	.....	1.2
29		2.2
	.....1993	
47	.....	3.2
48	.....	4.2
50	.....	5.2
52	.....	6.2
53		7.2
58		1.3
	.....1997 -	
59	-	2.3
	.....1999	
60		3.3
	.....1998 -	
61	-	4.3
	.....2001	
65	.....	1.4
66	.....	2.4
67	.....	3.4
68	.....	4.4
69	.....	5.4
70	.....	6.4
73	.....	7.4
77	.....	1.5
77	.....	2.5

124	.....	1.1
125	.....	2.1
126	.....( )	3.1
127	.....	4.1
128	.....	1.2
129	.....	2.2
130	.....	3.2
132	.....	1.3
134	.....	2.3
135	.....	3.3
137	.....	4.3
138	.....	5.3
141	.....	1.4
148	.....	1.5
149	.....	2.5

.....  
 .....  
 .....  
 .....  
 .....( )  
 .....( )

**1** ..... :

1	.....	1.1
2	.....	2.1
3	.....	3.1
3	.....	4.1
3	.....	5.1
4	.....	6.1
5	.....( )	7.1
7	.....	1.7.1
7	.....	2.7.1
9	...	8.1
10	.....	9.1
11	.....	10.1
11	.....	11.1
11	.....	12.1
12	.....	13.1
12	.....	14.1

134	.....	1.14.1
145	.....	2.14.1
156	.....	15.1
156	.....	1.15.1
168	.....	2.15.1
20	.....	16.1
<b>25</b>	..... :	
25	.....	1.2
26	.....	2.2
28	.....	1.2.2
30	.....	2.2.2
30	.....	3.2.2
30	.....	3.2
31	.....	1.3.2
31	.....	1.1.3.2
31	.....	2.1.3.2
32	.....	3.1.3.2
32	.....	4.1.3.2
33	.....	2.3.2
33	.....	1.2.3.2
33	.....	2.2.3.2
34	.....	3.2.3.2
34	.....	3.3.2
34	.....	1.3.3.2
35	.....	2.3.3.2
36	.....	3.3.3.2
36	.....	4.3.3.2
36	.....	4.3.2

37	..... ,	4.2
39	.....	5.2
39	.....	6.2
41	.....	1.6.2
42	.....	2.6.2
43	.....	3.6.2
43	.....( )	7.2
45	.....	1.7.2
49	.....	2.7.2
<b>54</b>	..... :	
54	.....	1.3
55	.....	2.3
55	.....	3.3
56	.....	4.3
56	.....	5.3
57	.....	6.3
57	.....	7.3
57	.....	1.7.3
58	.....	2.7.3
59	.....	3.7.3
60	.....	8.3
60	.....	1.8.3
60	.....	2.8.3
61	.....	3.8.3
<b>62</b>	..... :	

62	.....	1.4
62	.....	2.4
63	.....	3.4
63	.....	4.4
64	.....	5.4
64	.....	6.4
64	.....	1.6.4
64	.....	2.6.4
64	.....	7.4
72	.....	8.4
75	.....	9.4
<b>76</b>	..... :	
76	.....	1.5
79	.....	1.1.5
80	.....	2.1.5
82	.....	3.1.5
84	.....	4.1.5
87	.....	5.1.5
89	.....	6.1.5
91	.....	7.1.5
93	.....	8.1.5

95	.....	9.1.5
97	.....	2.5
100	.....	3.5
104	.....	4.5
108	.....	5.5
111	.....	6.5
114	.....	7.5
<b>116</b>	..... :	
116	.....	1.6
117	.....	2.6
<b>119</b>	.....	
<b>124</b>	.....	
<b>156</b>	.....	
<b>158</b>	.....	
<b>159</b>	.....	
<b>160</b>	.....	