



-

2013 - 1434

:

. . . :

/

-

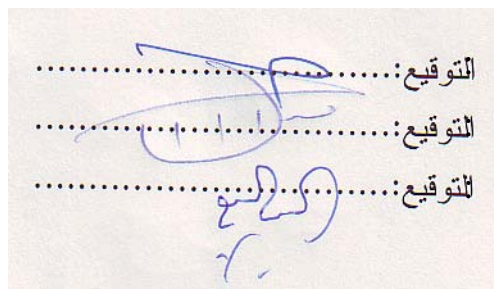
2013- 1434



:  
21010605 :

... :

: 2013/10/5

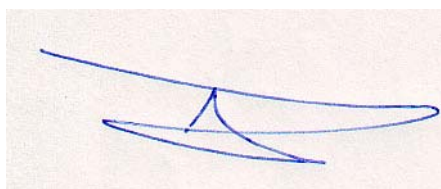


- .1 . . . :
- .2 . . . :
- .3 . . . :

-



إقرار



:

..... :



:

) .

.(1997

:

)

.(2011

:

.(2012

)

:

(2009

)

:

)

.(2009

:

.

.(2011 )

:

)

.(2011

:

.(2011 )

:

.

.(2011 )

:

.(2012 )

)

:

.(2004



:

(38)

(0.90)

( )

,(161)

(%75.8)

(141)

(spss)

)

( )

(T) :

(

( )

(

)

:

(%71)

(%76.6)

(%68.8)

(0.05 = $\alpha$ )

:

(0.05 =  $\alpha$ )

.

:

.

# **The Role of Women in the Municipalities of Jenin District in Decision-Making Between Obstacles and Ways of Reinforcing.**

**Student name: Eman Fawzi Abdalla Nazzal.**

**Supervisor : Prof. Tareq Al-Haj.**

## **Abstract:**

This study aimed to identify the role of woman who is a member in the municipalities of the province of Jenin in the decision-making from the perspective of the members of the municipal councils in those municipalities. It also aimed to determine the degree of difference in their opinions according to the difference of each of the following variable: age, gender, marital status, qualification, and job title of the municipality member. To achieve the objectives of this study, the researcher has used the descriptive analytical methodology, and she relied on a questionnaire as her study tool; she has designed a questionnaire to collect data related to this study.

To assure the veracity of the questionnaire, the researcher has presented it to a panel of experts in this field. In its final form, the questionnaire consisted of (38) paragraphs, and it enjoyed a high degree of sincerity, as the stability of tool resolution has been ascertained via the coefficient of internal consistency (Cronbach's Alpha), where the study tool enjoyed a high degree of stability worth (0.90). After that the questionnaire was distributed to the entire members of the study population , which consisted of all members of the elected municipal councils in the municipalities of Jenin , totaling (161) , and the number of questionnaires which were returned to the researcher were (141) questionnaires, representing (75.8 %) of the full members of the study population .

After the questionnaires have been collected, the researcher has written down the responses of the individuals surveyed and has entered them into the computer. The data of the questionnaire has been processed by using the software program (SPSS), where the (average balance) of each paragraph of the questionnaire has been calculated separately, also the (frequencies and percentages) have been calculated in order to answer the questions of the study. Furthermore the following tests were conducted: (T Test) for the independent samples, (ANOVA Test), and (Scheffe Test) for multiple comparisons.

This study has concluded that: the degree of the role of a woman who is a member of the municipalities in the decision-making is high, where the percentage of the responses of the respondents in this area was (71%). Also, the study has shown that the total score of the factors that enhance the role of a woman, a member of the decision-making, is high, where the percentage of responses of respondents in this area was (76.6 %), while the total score of the obstacles that restrict the role of a woman in decision-making is medium, where the percentage of responses of the respondents in this area was (68.8 %). This study has also shown that there are differences at the level of statistical significance ( $\alpha = 0.05$ ) between the responses of the respondents attributed to age, while there was no statistical differences at the level of statistical significance ( $\alpha = 0.05$ ) between the responses of the respondents attributed to the variables: age, gender, marital status, qualification, and job title for a member of the municipal council.

The study has had a number of recommendations, most notably: the need to train women members of the municipal councils on scientific methodology in the process of decision-making and problem-solving, and the need to increase the participation of women members in the municipal councils in the preparation of plans, and the development of future scenarios for municipal councils where there are those women members. The study has also recommended the need to find consensus among the members of municipal councils, to hold meetings of municipal councils in times compatible with the ability of women members to attend these sessions , so they would be able to fulfill their role and participate fully in the procedure of approving decisions issued by the municipal councils.



**1.1**

)

.(1999

.(2009 )

(1994)

.(2006 )

(87)

(13)

(74)

(4)

(26)

.(2003 )

.(2004 )

(1877)

( 1948)

(1948-1917)

(%77)

.(1996 ) 1967

(1921)

.(1986 )

(1948)

(1967)

(1972)

(1976)

) (1975/627)

.(1996

(2003)

.(2008 )

)

.(2006

**2.1**

:

-

-

-

-

**3.1**

:

-

:

-



: -

**4.1**

(2005)

:

:

**5.1**

:

.1

.2

.3

.4

.5

:

.

**6.1**

:

.1

.2

.3

.4

**7.1**

:

( $\alpha=0.05$ )

-1

( $\alpha=0.05$ )

-2

( $\alpha=0.05$ )

-3

( $\alpha=0.05$ )

-4

( $\alpha=0.05$ )

-5

.

### 8.1

:

(2012)

:

-

.(2013)

:

-

.

:

-

-4

- 3

-2

-1)

(13)

-9

-8

-7

-6

-5

-13

-12 ( )

-11

-10

.( ( )

---

1.2

.(2012 )

.(2006 )

(1918)

(1921)

(1929)

(1935)

(1938)

.(1999 )

(1948)

(1994)

(2012 )

**2.2**

(2011 )

(2007 )

**3.2**

:

.1  
.2  
.3  
.4  
.5  
.6  
)

.(2010

## 4.2

: -

.(2005 )

: -

" " (... )  
.

( )

.(2007 )

**5.2**

:

: -

( )

.(2005 )

: -

.(Mahmood,2002)



: -

)

.(2009

2000

1987

**6.2**

:

.1

.2

.(2006 )

.3

:

: .

(... )

.(2004 )

: .

( )

.( 2010•Shakib)

: .

)

(

.(2006 )

: .

.(2002 )

( )

( )

**7.2**

:

(2003)

(Murrel & Meredith,

(2000

(Melhem, 2006)

.(2011 )

)

.(2006

(1976) (1972)

.(1996 )

-

-

(1998)

(61)

(%1.6)

(3739)

)

.(2004

(1996/1/20)

-

( ) -

(%51)

(%49)

(%3.7)

(25)

.(2012 )

)

.(2006

(2006) (6) (17) (2011)

(2011 )

(13) (3) (25) (12)

186 26 1990 - %30  
%16.8 %12 %42 2010 %30  
%56

%63

%45

.(2011 )

**9.2**

) (1997) (1)

(1997

(1997)

1

)

.(15 1997

:

-

-

-

-

-

-

-

-

-

-

-

-

)

.(2011

**10.2**

( )



(2005 )

**11.2**

Anthony

:

:Strategic Decision : -

Management Decision: -

Operational Decision : -

:

knowledge-Level Decision : -

.(2006) Laudon

**12.2**

: Simon

:( ) -

:( ) -

:( ) -

.(2004 )

**13.2**

.(2004 ) .

14.2

:

: -

.(2004 )

: -

) (1)

(2)

(4)

(3)

.(2008 )

: -

.

.

.

.

.(2009 )

: -

.

:

.

.

.

.

.

.(2004 )

: -

( )

(2009 )

-

- -

(2009 )

15.2

:

-

-

-

-

.(2005 )

-

16.2

:

:

-

:

-

.

:

-

:

-

.(1999 )

:

:

:(2012)

-

:(2012)

-

:(2011)

-

:(2009) -

(205)  
(%0.05)

.(SPSS)

/

(2009) -



(2008) -  
(2006 2000)

:

:(2008) -

/

:(2007)

-

:

:(2005)

-

:(2005) -

:

:(2012) -

( )

:(2012) -

:

.

.

.

.

.

:(2012) -

( - )

:(1997) -

:

:

:(Chew, 2001) -

1991 1988 1984

:(Majed,2009) -

(1300)

%83

(1079)

: (Jakubowska & Stanisławiak-Oniszczenko, 2011) -

( )  
(24-18)

( )  
(538)

(64-36)

:

"

:(2012Kalaramadam,2012)

-

1993

-

(2009)

(2012)

(2012)

(2001 Chew)

(2009)

(1997)

(2012)

(2012)

( 2012•Kalaramadam)

(2009)

(2011)

(2012)

(2004)

(2005)

(2006)

(2006)

(2009)

(2009)

:

-

-

-

:

-

-

.

-

.

-

-



**1.3**

**2.3**

(162)

.2012



(141)  
(5.3-1.3) (%87.0)

:

-1

:1.3

%		
17.0	24	
83.0	117	
100.0	141	

(%83)

(1.3)

(%17.0)

.%20

-1

:2.3

		النوع الاجتماعي				العمر
		ذكر		أنثى		
%	العدد	%	العدد	%	العدد	
9.90	14	64.3	9	35.7	5	35-25
27.7	39	84.6	33	15.4	6	45-36
62.4	88	85.2	75	14.8	13	45
100.0	141	83.0	117	17.0	24	

(%62.4)

( 45 )

(2.3)

(%27.7)

( 45-36)

(%9.90)

( 35-25)

:

-3

:3.3

		النوع الاجتماعي				الحالة الزوجية
		ذكر		أنثى		
%	العدد	%	العدد	%	العدد	
9.20	13	15.4	2	84.6	11	/
90.8	128	89.8	115	10.2	13	/
100.0	141	83.0	117	17.0	24	

(3.3)

(%9.20)

(%90.8)

:

-4

:4.3

		النوع الاجتماعي				المؤهل العلمي
		ذكر		أنثى		
%	العدد	%	العدد	%	العدد	
22.7	32	84.4	27	15.6	5	
29.1	41	82.9	34	17.1	7	
48.2	68	82.4	56	17.6	12	
100.0	141	83.0	117	17.0	24	

(4.3)  
 (%30.0) (%48.2)  
 (%23.0)

-5

:5.3

		النوع الاجتماعي				المسمى الوظيفي
		ذكر		أنثى		
%	العدد	%	العدد	%	العدد	
85.1	120	80.0	117	20.0	24	
7.80	11	100.0	11	0	0	
7.10	10	100.0	10	0	0	
100.0	141	83.0	117	17.0	24	

(5.3)

(5.3)

3.3

: 1.3.3

:

(38)

: (6.3)

:6.3

15	:	1
12	:	2
11	:	3
38		

(5)

.(1)

(2)

(3)

(4)

: **.2.3.3**

)

(8)

(

.%75

. (38)

: .3.3.3

( )

.(Cronbach Alpha)

:

(7.3)

:7.3

0.91	
0.89	
0.90	

(7.3)

(0.91-0.89)

.4.3

:

:

.( 45 45-36 35-25) : -1

.( / / ) : -2

( ) : -3

( ) : -4

( ) : -5

5.3

(141)

(SPSS)

6.3

(SPSS)

(Independent Samples-T-Test)

(Two-Way Analysis of Variance)

(One-Way Analysis of Variance)



**1.4**

(SPSS)

:

:

**.1.1.4**

(2.4)

:

:1.4

	2.5	%50
	3 -2.5	% 59.9-50
	3.5 -3	% 69.9-60
	4 - 3.5	%79.9-70
	4	%80

: -2.4

	79.8	1.01	3.99	( )	11	1
	78.2	0.82	3.91		10	2
	76.6	0.93	3.83		8	3
	72.6	0.94	3.63		9	4
	72.0	0.98	3.60		15	5
	71.8	1.03	3.59		6	6



: -2.4

	71.0	0.96	3.55		7	7
	70.8	0.87	3.54		1	8
	70.6	1.05	3.53	( )	14	9
	70.2	1.03	3.51		13	10
	69.6	0.93	3.48		5	11
	68.6	0.94	3.43		3	12
	67.8	0.90	3.39		4	13
	64.4	1.00	3.22		2	14
	61.2	1.12	3.06		12	15
	71.0	0.64	3.55			

(2:4)  
 (14 1 7 6 15 9 8 10 11)  
 (70.2 70.6 70.8 71.0 71.8 72.0 72.6 76.6 78.2 79.8)  
 (12 2 4 3 5)  
 (61.2 64.4 67.8 68.6 69.6)

.(71.0)

( 2012)      (2008)  
                  (2012)

:      **.2.1.4**

:      (3.4)

: -3.4

	81.2	0.83	4.06		2	1
	81.0	0.84	4.05		1	2
	80.0	0.81	4.00		3	3
	79.4	0.91	3.97		5	4
	78.2	0.80	3.91	) (	7	5
	77.6	0.93	3.88		6	6
	76.8	0.89	3.84		4	7
	76.6	0.84	3.83		11	8
	74.4	0.96	3.72		10	9
	73.8	0.93	3.69		12	10

: -3.4

	72.4	1.00	3.62		9	11
	67.6	0.97	3.38		8	12
	76.6	0.60	3.83			

(3:4)

81.2)

(3 1 2)

(9 12 10 11 4 6 7 5)

(80.0 81.0

73.8 74.4 76.8 77.6 78.2 79.4)

(8)

(72.4

(67.6)

.(76.6)

(1997) (2012) (2006)

: 3.1.4

(4.4)

: -4.4

	78.4	0.91	3.92		4	1
	73.6	0.89	3.68		1	2
	73.4	0.89	3.67		2	3
	70.4	1.07	3.52		3	4
	70.4	1.09	3.52		9	5
	67.8	0.96	3.39		6	6
	66.8	1.18	3.34		7	7

: -4.4

	66.4	1.04	3.32		8	8
	65.2	0.97	3.26		11	9
	64.0	0.99	3.20		10	10
	49.6	1.24	2.98		5	11
	68.8	0.71	3.44			

(4.4)

(3 2 1 4)

11 8 7 6)

(70.4 70.4 73.4 73.6 78.4)

(64.0 65.2 66.8 67.8)

(10

(5)

(49.6)

.(68.8)

(2007)

(2012)

:

**.4.1.4**

:

**.1.4.1.4**

$(\alpha \leq 0.05)$

(Independent t-test)

( )

:

(5:4)

( ) :5.4

	( )	(117= )		(24= )		
*0.002	3.204	0.65	3.47	0.46	3.92	
*0.013	2.517	0.63	3.77	0.34	4.10	
0.472	0.721	0.68	3.42	0.83	3.53	

(139)

( $\alpha \leq 0.05$ )

\*

( $\alpha \leq 0.05$ )

(5:4)

(0.472)

( $\alpha \leq 0.05$ )

0.002)

(0.013

(2011)

(2007)



( $\alpha \leq 0.05$ )

(Two-Way ANOVA)

: (7:4) (6:4)

:6.4

0.80	3.67	0.61	3.79	35-25	
0.70	3.65	0.30	4.09	45-36	
0.59	3.37	0.47	3.89	45	
0.94	3.77	0.32	3.95	35-25	
0.60	3.91	0.24	4.06	45-36	
0.59	3.71	0.37	4.19	45	
0.77	3.64	0.96	4.04	35-25	
0.73	3.69	0.60	2.98	45-36	
0.61	3.27	0.79	3.59	45	

: -7.4

	" "					
*0.026	5.053	1.908	1	1.908		
0.345	1.072	0.405	2	0.810		
0.577	0.552	0.208	2	0.417	×	
		0.378	135	50.984		
			140	54.119		
0.082	3.079	1.074	1	1.074		
0.838	0.177	0.062	2	0.123		
0.512	0.672	0.234	2	0.469	×	
		0.349	135	47.095		
			140	48.761		

: -7.4

مستوى الدلالة	"ف" المحسوبة	متوسط الانحراف	درجات الحرية	مجموع مربعات الانحراف		
0.976	0.001	0.000	1	0.000		
0.100	2.347	1.084	2	2.168		
*0.014	4.378	2.022	2	4.045	×	
		0.462	135	62.359		
			140	68.572		

( $\alpha \leq 0.05$ )

\*

$(\alpha \leq 0.05)$

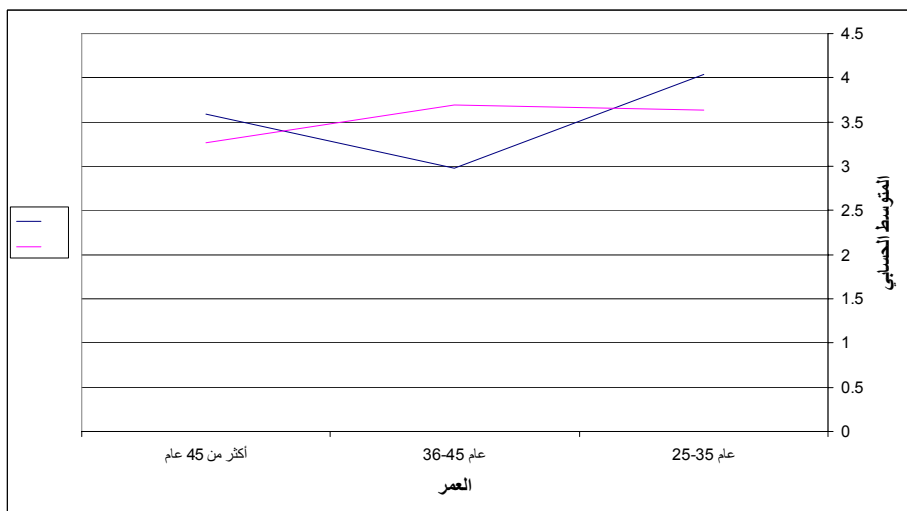
(7.4)

$(\alpha \leq 0.05)$

$(\alpha \leq 0.05)$

(1.4)

: (1.4)



( 45-36)

(1.4)

( 45-36)

( 45-36)

(45-36)

%9.9

(35-25)

25

( 45 )

(2009)

(2008)

:

**.3.4.1.4**

$(\alpha \leq 0.05)$

(Two-Way ANOVA)

: (9:4) (8:4)

:8.4

0.02	4.73	0.44	3.90	/	

0.63	3.45	0.49	3.93	/	
0.35	4.33	0.25	4.04	/	
0.63	3.76	0.40	4.16	/	
0.96	3.86	0.88	3.48	/	
0.68	3.41	0.82	3.57	/	

:9.4

	" "					
0.485	0.491	0.180	1	0.180		
*0.013	6.304	2.313	1	2.313		
*0.009	6.930	2.542	1	2.542	×	
		0.367	137	50.259		
			140	55.294		
0.833	0.045	0.016	1	0.016		
0.356	0.859	0.298	1	0.298		
0.154	2.051	0.711	1	0.711	×	
		0.347	137	47.473		
			140	48.498		
0.709	0.140	0.071	1	0.071		
0.538	0.381	0.193	1	0.193		
0.349	0.882	0.447	1	0.447	×	
		0.507	137	69.440		
			140	70.151		

( $\alpha \leq 0.05$ )

\*

$(\alpha \leq 0.05)$

(9.4)

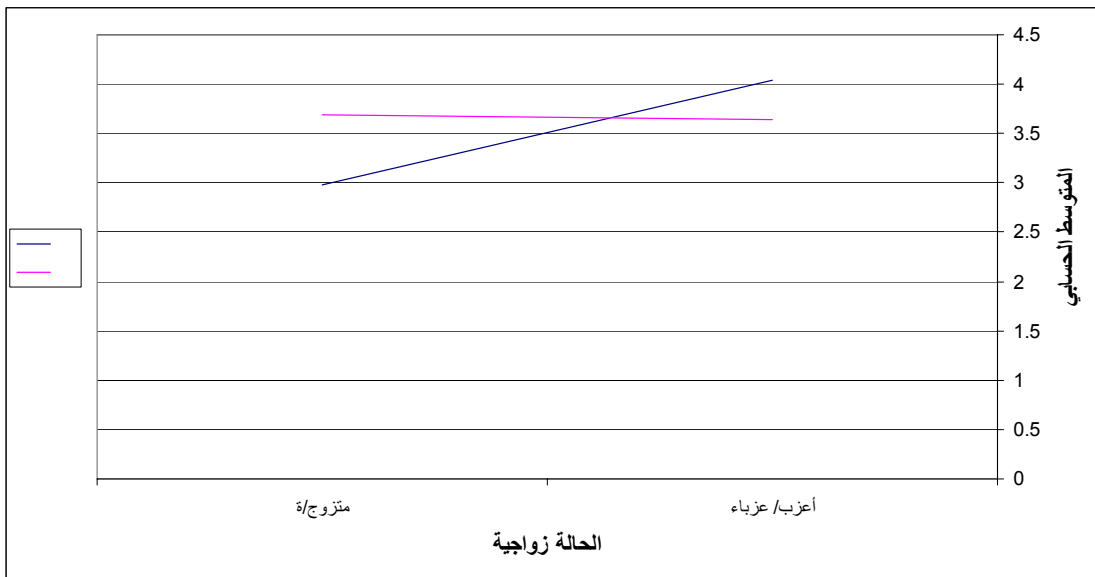
( / )

$(\alpha \leq 0.05)$

$(\alpha \leq 0.05)$

(2.4)

:(2.4)



(2.4)

( / )

( / )

(2012)

(2012)

:

.4.4.1.4

$(\alpha \leq 0.05)$

(Two-Way ANOVA)

: (11.4) (10.4)

:10.4

0.56	3.66	0.32	3.99		
0.76	3.52	0.32	4.11		
0.60	3.36	0.55	3.78		
0.49	3.96	0.21	4.17		
0.73	3.82	0.30	4.21		
0.60	3.65	0.39	4.01		

0.70	3.45	0.64	3.47		
0.75	3.53	0.70	3.91		
0.63	3.33	0.95	3.33		

:11.4

	" "					
*0.003	9.298	3.522	1	3.522		
0.190	1.684	0.638	2	1.276		
0.767	0.266	0.101	2	0.201	×	
		0.379	135	51.140		
			140	56.139		
*0.023	5.308	1.816	1	1.816		
0.293	1.238	0.424	2	0.847		
0.875	0.133	0.046	2	0.091	×	
		0.342	135	46.180		
				48.934		
0.423	0.645	0.322	1	0.322		
0.113	2.218	1.109	2	2.218		
0.576	0.555	0.277	2	0.555	×	
		0.500	135	67.510		
			140	70.605		

( $\alpha \leq 0.05$ )

\*



$(\alpha \leq 0.05)$

(11.4)

(2012)

:

**.5.4.1.4**

$(\alpha \leq 0.05)$

(One-Way ANOVA)

(13:4) (12:4)

:

:12.4

0.64	3.58	120		
0.75	3.36	11		
0.43	3.36	10		

0.62	3.85	120		
0.43	3.68	11		
0.48	3.76	10		
0.71	3.47	120		
0.65	3.45	11		
0.61	3.02	10		

:13.4

	" "					
0.348	1.064	0.436	2	0.872		
		0.410	138	56.569		
			140	57.441		
0.635	0.456	0.166	2	0.331		
		0.363	138	50.068		
			140	50.400		
0.154	1.893	0.937	2	1.874		
		0.495	138	68.288		
			140	70.162		

( $\alpha \leq 0.05$ )

\*

( $\alpha \leq 0.05$ )

(13.4)

(0.154 0.635 0.348)

:

**.5.1.4**

:

- 
- 
- 

:

**.6.1.4**

:

- 
- 
- 
- 
-



(SPSS)

1.5

:

-

-

-

-

-

-

**2.5**

:

-

-

-

-

-

:

.(2007) . •

.(2005) . •

:(2005) . •

.1 . : .(2003) . •

.(2009) •

.900 .(2004) . •

.http://www.ahewar.org

.(2) .(2004) •

.(1) :(1999) •

.(2011) •

.(2004) •

.(1998) •

.(2005) . •

.(1996) . •

1

.(1986).

•

.(2009) .

•

.(2000)

•

.(2009) .

•

: (1998) .

•

.(2006) .

•

.(2011)

•

.(2011).

•

.(2006) .

•

.108-71 25

.(2012) .

•

. / -

.(2006) .

•

.(2005) .

•

.2004 -1996

.(1999) .

•

..

- .(1996) . •
- .(2009) •
- .(2012) •
- .(2012 ) . •
- .(1998) . •
- .(2006) . •
- .(2012) . •
- .(2011) . •
- " .(2011) •
- .43-34 61 .
- (2007) . •
- .(2009). •
- .(2011) •
- .(2004) . •
- .(2008) . •
- (2006 -2000)



.(2002) . •

.85 .(2002) •  
[.http://www.ahewar.org](http://www.ahewar.org)

.(2004) . •

.(2011) •

2005 (1) : (2005) . •

(2004 (5 ) ) .(2004) . •

.(2003) •

(2003 (5)

1997 (1) •

— .(1997) •

— .(2008). •

.(1999) •

.(2001) •

.(2011) •

(2011) •

(2000) •

(2005) •

(2010) •

(2012) •

(2010) •

(2009)-(2004)

-1994 (2003) •

2000

(2007) •

- Boshra N. (2006). Investigation of the relation ship between strategic thinking and innovate activeness' of the management at the ministry of health in Gaza strip . Islamic University –Gaza.
- Chew, P. (2001). Political Women in Singapore. Women’s Studies International Forum, 24 (6), pp. 727–736.
- Faris M. (2009). Palestinians attitudes and perceptions tow ards women he Idnnguppet – level administrative: of the case of middle and southten part of the west bank. Hebron University Palestine.

- Ismail S. (2012). Critical evaluation of the inter cross- departmental "projects communications management at UNRWA-GAZA field office within the constriction and –in frastructure sector .Islamic university -Gaza
- Kalaramadam, S. (2012). Dis/empowering political subjects: The production of “failed” elected women representatives in India. *Women's Studies International Forum*. 35, 276-285.
- Mahmood, N. (2002). Women's Role in Domestic Decision-making in Pakistan. *Jstor*, 41(2), 121-148.
- Melhem, Y. (2006). Prerequisites of Employee Empowerment: The Case of Jordanian Mobile Phone Companies. ***Jordan Journal of Business Administration***, 2(4), 585-598.
- Murrell, K. & Meredith, M. (2000). *Empowering Employee*, McGraw – Hill, New York.
- Oniszczenko, W.; Jakubowska, U. & Stanisławiak, E. (2011). Gender differences in socio-political attitudes in a Polish sample. *Women's Studies International Forum*, 34, 371–377.
- Shakib, S. (201). Female Basketball Participation: Negotiating the Conflation of Peer Status and Gender Status from Childhood through Puberty, *American Behavioral Scientist*, 46(10),1405-142.

:(1)

- .  
- .  
- .  
- .  
- .  
- .  
- .  
- .  
- .  
- .

:(2)



/

/

- -

:

:

:

:

45 (3) 45-36 (2) 35-25 (1) :  
 / -(4) / -(3) / -(2) / -(1) :  
 (2) (1) :  
 (3) (2) (1) :  
 (3) (2) (1) :

(X)

-1

						A1
						A2
						A3
						A4
						A5
						A6
						A7

						A8
						A9
						A10
						A11
					( )	A12
						A13
					( )	A14
						A15

						B1
						B2
						3B
						4B
						5B
						6B
					) (	7B



						8B
						9B
						B10
						B11
						B12

-2

						C1
						C2

						C3
						C4
						C5
						C6
						C7
						C8
						C9
						C10
						C11

:(3)

72

. 2005 10

:

36

-23

22

2005-1-27

14

2004-12

. 1996 5

:

5/5/2005

82

76

6

1996 (5)

104

( )

2005/9/29

.2005 (10)

40 2005/12/15

( )

2005 (10)



.

:

:( -3)


-

:

:( -3)


72	.....	(1)
73	.....	(2)
79	.....	(3)

37	.....	1.3
37	.....	2:3
38	.	3.3
38	.	4.3
39		5.3
	.....	
40	.....	6.3
41		7.3
	.....	
44		1.4
	.....	
44		2.4
	.....	
47		3.4
	.....	
49		4.4
	.....	
51		5.4
	( )	
	.....	



53		6.4
53	.....	7.4
56	.....	8.4
57	.....	9.4
59	.....	10.4
60	.....	11.4
61	.....	12.4
62	.....	13.4
	.....	

55

1.4

.....

58

2.4

.....

.....

.....

.....

.....

.....

..... **Abstract**

**1** .....

1 ..... 1.1

3 ..... 2.1

4 ..... 3.1

5 ..... 4.1

5 ..... 5.1

5 ..... 6.1

6 ..... 7.1

6 ..... 8.1

**8** .....

8 ..... 1.2

10 ..... 2.2

10 ..... 3.2

11 ..... 4.2

12 ..... 5.2

13 ..... 6.2

15	.....	7.2
16	.....	8.2
19	.....	9.2
20	.....	10.2
21	.....	11.2
22	.....	12.2
22	.....	13.2
23	.....	14.2
25	.....	15.2
26	.....	16.2
26	.....	17.2
26	.....	.1.17.2
31	.....	.2.17.2
32	.....	.3.17.2
34	.....	18.2
<b>36</b>	.....	:
36	.....	1.3
36	.....	2.3
39	.....	3.3
39	.....	.1.3.3
40	.....	.2.3.3
40	.....	.3.3.3
41	.....	.4.3
42	.....	5.3
42	.....	6.3
<b>43</b>	.....	:
43	.....	1.4
43	.....	.1.1.4
46	.....	.2.1.4

49	.....	.3.1.4
51	.....	.4.1.4
62	.....	.5.1.4
63		.6.1.4
	.....	
<b>64</b>	..... :	
64	.....	1.5
65	.....	2.5
<b>66</b>	.....	
<b>83</b>	.....	
<b>84</b>	.....	
<b>86</b>	.....	
<b>87</b>	.....	