

:

-

2007 - 1428

:

()

. . :

-()

2007 - 1428



20011529:

23\5\2007

- : . . : -1
- : . : -2
- : . : -3
- : . . : -4

-

2007- 1428

إلى كل المخلصين والشرفاء في هذا الوطن

إلى الشهداء الذين ضحوا بدمائهم لرفعة الوطن

إلى روح والدي ووالدتي

إلى زوجتي وأولادي

إلى أخوتي لم تلدهم أمي

إلى الأصدقاء والزملاء جميعا

سامر حيدر صالح أبو بكر

:

.

:

23/5/2007:

:

:

.(2004)

.(2004)

:

.(2004)

:

()

.

:

(1999

)

:

•

:

•

:

•

:

•

.(

)

:

•

:

•

.(

)

:

•

(

)

:

•

•

:

•

:

: PARC

: CARE

: ACH

:

.

.

.

:

.

.

و

**(The Role of the Non-governmental local and International organization
on the Development of Small Ruminants Sector in Jenin governorate)**

Abstract

The objectives of this study are to investigate role of the non-governmental local and international organization in developing the small ruminants sector in Jenin district, the influence of some social and economical factors of the farmers in relation: to support, the current status of the funded projects, and the impact of support on the funded project and the degree of coordination between projects and fund organizations.

Three villages in Jenin district and three fund organizations are the focus of this study.

All families of these villages were surveyed. Social and economical factors related to the funding of projects were considered in the survey.

This study show that there is a weak coordination between the non-governmental local organizations and the international organizations, in addition to the reliance on the relief role of the projects and programs proposed by these organizations instead of the developmental role.

moreover, there is a lack in the official referential that organizes, coordinates and monitor the work of these associations.

By comparing the work of the international organizations with the local organizations, similarity in the project proposed by some organizations.

It was also found that some organizations especially, the international ones , depend on distributing the projects on a larger number of farmers in unstudied way .

The study shows confused irregular standards in relation to funded projects adopted by the international organizations on this study, no clearance in the plans, goals, and the finance by most organizations working in this field, poor extension and follow up by the funding organizations.

In general, most of funds went to projects which had little impact on sustainability and utilizing of labor force.

1.1

(2005–2000)

(%60)

)

(2005-2000)

(

(1998

)

%12

.(1994) (%60)

(2003)

(856)

(%44.7)

.(2003

)

.
()
(1.220.800)
) .(158.140
(2003 .2003
:

(2002 Abo-Omar 2001 Abo-Omar)

.(2002 .2001 Hammad)

Abo Omar)

.(2002

.

(2000)

22 (1260) (1,000,000)

.(PARC 2005, ACH 2005, CARE 2005)

(%60)
)

.(1997

1.2

()

(2005-2000)

.

1.3

:

:

•

•

•

•

1.4

1.5

:

1.5.1

)

.(

: **1.5.2**

: **1.5.3**

: **1.5.4**

: **1.5.5**

: **1.5.6**

: **1.5.7**

: **1.5.8**

: **1.5.9**

: **1.5.10**

: **1.5.11**

: **1.5.12**

: **1.6**

()
)

.(2004

2.1

Abo)

(2001 Omar

(%49)

(%36)

.(2002 Abo Omar)

(%30

%20)

(2003

)

(1.220.800)

(2003

)

(158.140)

(%11.4)

.2004) (%12.4)
 : (1.2) (2005

: (1.2)

2003	1999	1996	1993	1990	1987	1984	1981	
36593	63000	76700	74300	64000	64680	45180	39630	
111911	11000	9000	8200	4590		0	0	
9636	18216	33700	26050	23650	21360	25350	18350	

(.2003)

: **2.1.1**

- 60)

(500 - 1)

(% 70

.(Abo Omar 2002,)

:

.(Abo Omar,2002)

(% 56)

2.1.2

: ()

2.1.2.1

(Seasonal polyestrous) ()

(1999 Zarqawi)

:

(Kridili, 2003, Zarqawi, 1997)

:

(5)

(Kridili et al., 2006,

).(Nawaz, 1998)

2.1.2.2

:

.(2004)

: **2.1.2.3**

()

.(2004)

: **2.2**

1994

)

.(2003

(% 60)

(2004)

.(2004)

(%12)
) (%44.7)
(2004
()
(2004)
(2003 2001)
:
:
.2.2.1
:
2.2.2

) (Abo Omar, 2002)
(2005

(% 70)

.2002

.2001 Hammad.(2003

:

2.2.3

.(2004)

:

2.2.4

.(2004)

:

2.2.5

()

:

.

.(2004)

.(2004)

() **2.3.1**

(2004)

() **2.3.2**

(1967)

(2004)

: **2.4**

(2005-2000)

:(PARC): **2.4.1**

(1983)

(15-8)

(1-0.8)

(2005)

: (Care International): 2.4.2

(CARE)

(60)

(CARE)

CARE

1948

(CARE)

(CARE)

(CARE)

(CARE)

:

(7)

(2)

(USAID)

(EU)

.(2005

)

:(ACH) :

2.4.3

)1979)

(Action Against Hunger)

:

40

(2002)

:

:

"

.

.

%85

:

)

.(2005

: **3.1**

(pretest)

: 3.2

:

.PARC. .1

Care International. .2

ACH. .3

(1,3)

:1.3

30	PARC	
31	ACH	
30	CARE	

: 3.3

91

: 3.4

(SPSS)

:

•

(Chi square X^2)

•

1.4

:(1.4)

(37) (35-24)

(50-35)

(% 41)

(%45)

(41)

(%14)

(13)

(50)

:1.4

40.7	37	35-24	
45.1	41	50-36	
14.3	13	50	
65.9	60	7-4	
27.5	25	10-8	
6.6	6	10	
24.2	22		

75.4	69		
11	10		
37.4	34		
47.3	43		
4.4	4		
3.3	3		
1.1	1		
19.8	18		
75.8	69		
67	61		
33	33		
36.3	33		
63.7	58		
64.9	59	3	
3.3	30	7-4	
2.2	2	8	
16.5	15		
19.8	18		
37.4	34		
26.4	24		

(7-4)

(%66)

(60)

6 (11)

(25) (10-8)

(7-4)

(% 24.2)

(22)

(%75.8)

(69)

(% 11) (10)
(%37) (34)
(%47) (43)
(%4.4) (4)

(3)
(18) ()
(69)

(61)
(30)

(33)
(58)

(59)

(30)

(7-3)

(8)

(15)

(18)

(34)

:

(24)

(Chi square)

(X^2)

(2.4)

: (2.4)

(X²) : 2.4

<i>P</i>	df	X ²	X ²	()
*0.000	4	18.55	40.42	2.1
*0.000	2	10.60	43.32	2.2
*0.000	4	14.86	170.53	.3
*0.000	3	12.84	69.14	4.1
*0.000	6	18.55	44.80	4.2
000.0	2	10.60	46.72	.5
*0.000	6	18.55	70.75	.6
*0.000	3	10.60	14.26	7.
0.002	6	18.55	21.40	.8
0.15	9	23.59	20.58	.9
0.603	9	12.84	7.32	.10
*0.128	3	12.84	5.68	.11
*0.37	4	14.86	4.25	.12

.(0.05) *

(2.4)

(31)

(21)

.

(31)

(28)

.()

)

(-

(31)

(30)

(30)

(29)

(30)

.

.

()

()

.

()

.

() ()

.

.()

()

)

.(

()

.

()

.

:

1.1.4

.(3.4)

:3.4

91	62	29	
91	2	89	
91	2	89	
91	62	29	

(29)

(89)

(89)

(29)

.

:4.4

:

	31	31	-		
	30	30	- -		
	10	30			

20 (4.4)

.()

: 2.4

:

•

•

•

)

.(

•

•

•

•

•

(%50) (%50)

. (%100)

•

•

•

•

•

•

)

(

:

-
-
-
-
-
-
-
-
-
-
-
-
-
-
-

•

.

- .2004 . •
- (2005) •
- (2005) •
- (2005) •
- (2004 2003) •
- :(2004). •
- :(1999). •
- .() •
- 6 () :(2001) . •
- :(2005). •
- .22
- :(2005). •
- .69
- :(2002) . •
- .23

- .(1997). •
- .(2002). •
- .46
- :(1994) . •
- 13 -11 . 32
- () :(2003) . •
- :(2004) . •
- .35 29 3
- :(2004) . •
- :(2003). •
- .(2003) •
- :(1998) •
- :(2003) •
- :(2003) . •

- Abo Omar, J. (2002): Utilization of carton cardboard in fattening rations of Awassi lambs. *Small Ruminant Research*. 46:187-190
- Abo Omar, J.(2001): Utilization of sesame cake in fattening rations of Awassi lambs. *Small Ruminant Research*. 42:169-172
- Hammad,W.2001. Comparison and Evaluation of Awassi Lambs Fattening Systems in Palestine.
- 4.Kridli, R. Abdullah Y. Abdullah, Moh'd Momani Shaker and Nawzat M. Al-Smadi .(2006): Reproductive performance and milk yield in Awassi ewes following *Small Ruminant Research*,50, 45-53 .
- Kridli, R. , M. Q. Hussein and W. D. Humphrey.(2003): Effect of royal jelly and GnRH on the estrus synchronization and pregnancy rate in ewes using intravaginal sponges. *Small Ruminant Research*, Volume 49, 25-30.
- Nawaz, M. and M. Khalil Ahmad.(1998): Comparison of Lohi and crossbred ewes: productive and reproductive traits • *Small Ruminant Research*, 27, Issue 3, 223-229.
- Zarkawi, M. (1997): Monitoring the reproductive performance in Awassi Ewes using progesterone radioimmunoassay . *Small Ruminant Research*, Volume 26, Issue 3, 291-294 .

- Zarqawi M., M. R. Al- Merestani, and M. F. Wardeh. 1999. Induction of synchronized estrous in indigenous Damascus goats outside the breeding season. *Small Ruminant Research*.33: 193- 197.

(1)

/

"

:

"

:

.

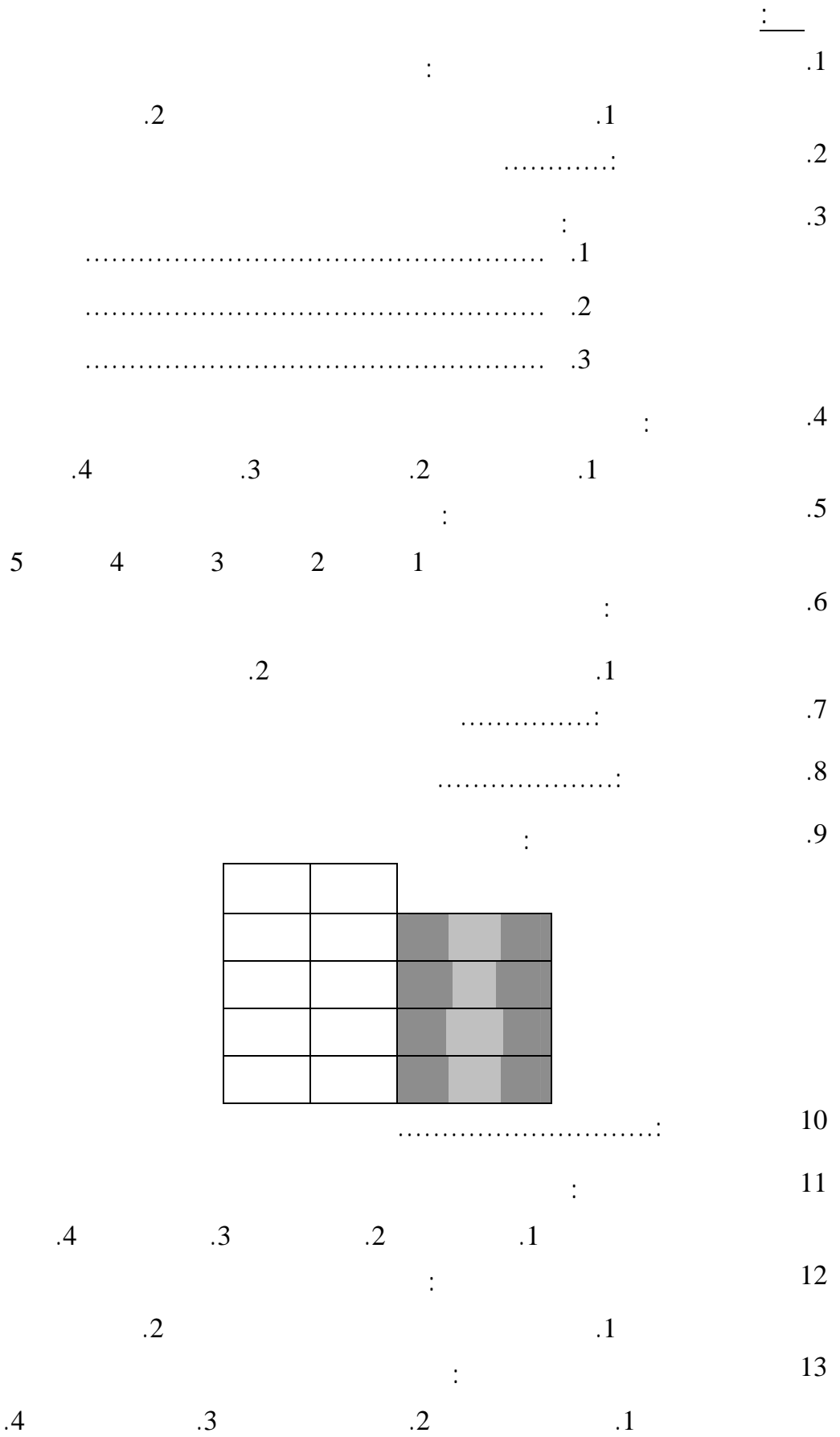
/

-

2007

40

					:	.1
					:	.2
					:	.3
					:	.4
	.2		.1		:	.5
.4	.3	.2	.1			
					:	.6
	.3	.2	.1			
					:	.7
	.2		.1			
					:	.8
.5	.4	.3	.2	.1		.9
	%.....:					.10
		:			.11
					:	.12
	.3	.2	.1			



(X²) : (2)

*	2							
*0.000	40.42	31	21	6	1	3		
		31.0	9.5	5.5	9.2	6.8		
		30	7	4	10	9		
		30.0	9.2	5.3	8.9	6.6		
		30	0	6	16	8		A.C.H
		30.0	9.2	5.3	8.9	6.6		
		91	28	16	27	20		
		91.0	28.0	16.0	27.0	20.0		

(18.55)

2 (6)

(0.05)

*

χ^2 : (3)

*	2					
*0.000	43.32	31	28	3		A.C.H
		31.0	13.3	17.7		
		30	6	24		
		30.0	12.9	17.1		
		30	5	25		
		30.0	12.9	17.1		
		91	39	52		
		91.0	39.0	52.0		

(10.60)

2 (2)

(0.05)

*

*	2						
*0.000	170.53	31	0	30	1		A.C.H
		31.0	9.9	10.2	10.9		
		30	29	0	1		
		30.0	9.6	9.9	10.5		
		30	0	0	30		
		30.0	9.6	9.9	10.5		
		91	29	30	32		
		91.0	29.0	30.0	32.0		

(14.86)

2 (4)

(0.05)

*

*	2					
*0.000	69.14	20	1	19		
		20.0	8.6	11.4		
		27	0	27		
		27.0	11.6	15.4		
		16	11	5		
		16.0	6.9	9.1		
		28	27	1		
		28.0	12.0	16.0		
		91	39	52		
		91.0	39.0	52.0		

(12.84)

2 (3)

(0.05)

*

*	2						
*0.000	44.800	20	9	3	8		
		20.0	6.4	6.6	7.0		
		27	10	0	17		
		27.0	8.6	8.9	9.5		
		16	3	6	7		
		16.0	5.1	5.3	5.6		
		28	7	21	0		
		28.0	8.9	9.2	9.8		
		91	29	30	32		
		91.0	29.0	30.0	32.0		

(18.55)

2 (6)

(0.05)

*

*	2					
*0.000	46.72	32	5	27		
		32.0	13.7	18.3		
		30	28	2		
		30.0	12.9	17.1		
		29	6	23		
		29.0	12.4	16.6		
		91	39	52		
		91.0	39.0	52.0		

(10.60)

2 (2)

(0.05)

*

*	2								
*0000	70.75	59	24	4	17	14			
		59	15.6	22.0	11.7	9.7			
		30	0	29	0	1		7-3	
		30	7.9	11.2	5.9	4.9			
		2	0	1	1	0		7	
		2	0.5	0.7	0.4	0.3			
		91	24	34	18	15			
		91	24.0	34.0	18.0	15.0			

(18.55)

² (6)

(0.05)

*

2

:(9)

*	2					
*0.003	14.26	3	0	3		
		3	1	2		
		1	0	1		
		1	0.3	0.7		
		18	0	18		
		18	5.9	12.1		
		69	3	39		
		69	22	46.3		
		91	30	61		
		91	30	61		

(10.60)

2 (3)

(0.05)



*	2							
				16	15-8	7		
*0.002	21.40	37	29	0	3	5		35-24
		37.0	24.4	3.3	6.1	3.3		
		41	23	4	12	2		50-36
		41.0	27.0	3.6	6.8	3.6		
		13	8	4	0	1		50
		13.0	8.6	1.1	2.1	1.1		
		91	60	8	15	8		
		91.0	60.0	8.0	15.0	8.0		

(18.55)

2 (6)

(0.05)

*

*	2							
0.15	20.58	3	0	0	1	2		
		3.0	0.9	0.5	0.9	0.7		
		1	0	1	0	0		
		1.0	0.3	0.2	0.3	0.2		
		18	0	4	9	5		
		18.0	5.5	3.2	5.3	4.0		
		69	28	11	17	13		
		69.0	21.2	12.1	20.5	15.2		
		91	28	16	27	20		
		91.0	28.0	16.0	27.0	20.0		

(23.59)

2 (9)

(0.05)

*

*	2							
0.603	7.32	10	2	2	4	2		
		10.0	3.1	1.8	3.0	2.2		
		34	12	7	10	5		
		34.0	10.5	6.0	10.1	7.5		
		43	14	5	12	12		
		43.0	13.2	7.6	12.8	9.5		
		4	0	2	1	1		
		4.0	1.2	0.7	1.2	0.9		
		91	28	16	27	20		
		91.0	28.0	16.0	27.0	20.0		

(23.59)

2 (9)

(0.05)

*

*	2							
0.128	5.68	33	7	4	11	11		
		33.0	10.2	5.8	9.8	7.3		
		58	21	12	16	9		
		58.0	17.8	10.2	17.2	12.7		
		91	28	16	27	20		
		91.0	28.0	16.0	27.0	20.0		

(12.84)

² (3)

(0.05)

*

*	2					
0.37	4.25	34	9	25		%2.5
		34.0	13.1	20.9		
		19	10	9		%5
		19.0	7.3	11.7		
		18	7	11		%10
		18.0	6.9	11.1		
		10	5	5		%15
		10.0	3.8	6.2		
		10	4	6		%20
		10.0	3.8	6.2		
		91	35	56		
		91.0	35.0	56.0		

(14.86)

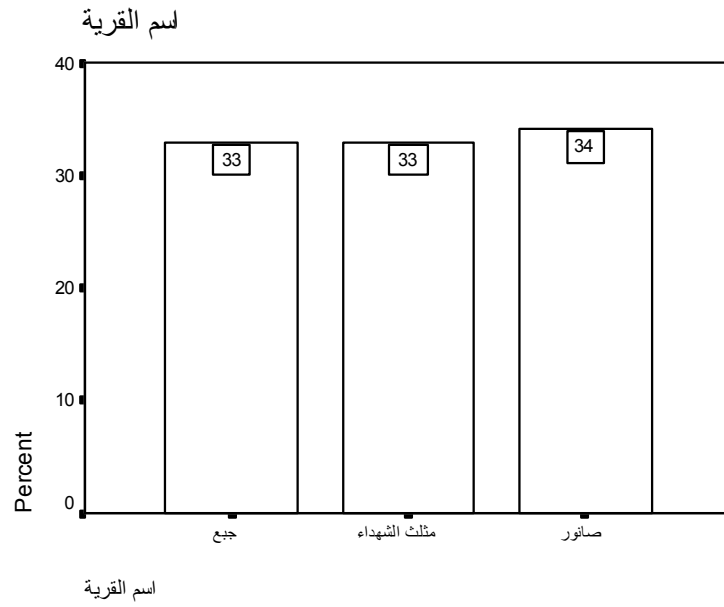
² (4)

(0.05)

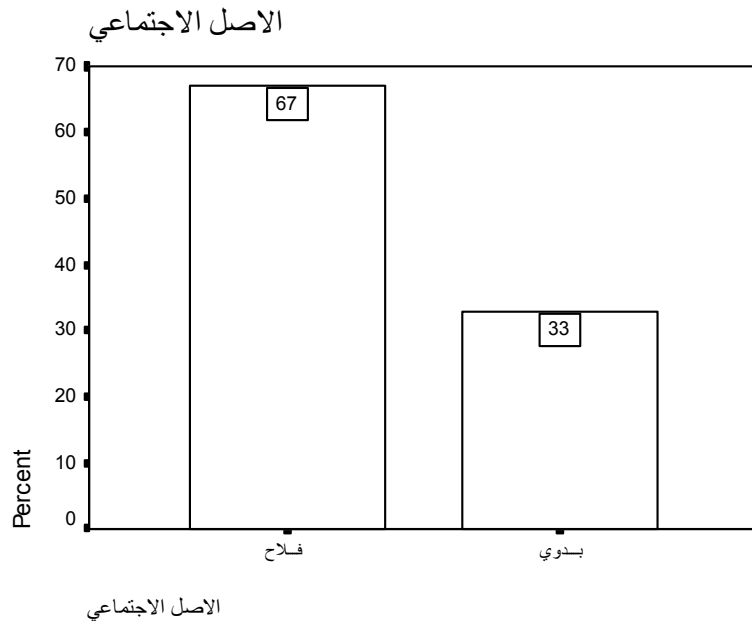
*

:(15)

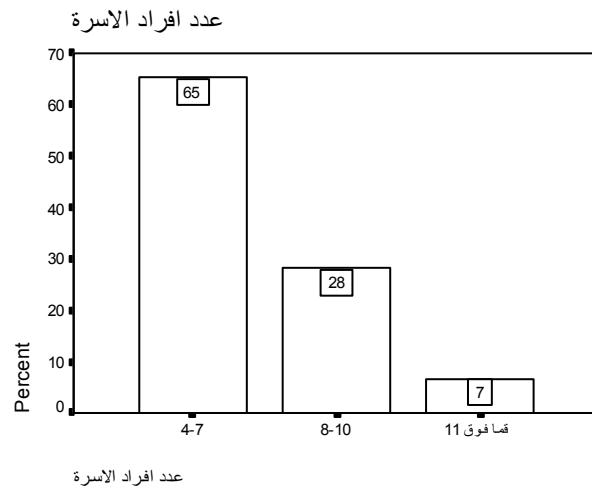
91	62	29	
91	2	89	
91	2	89	
91	62	29	



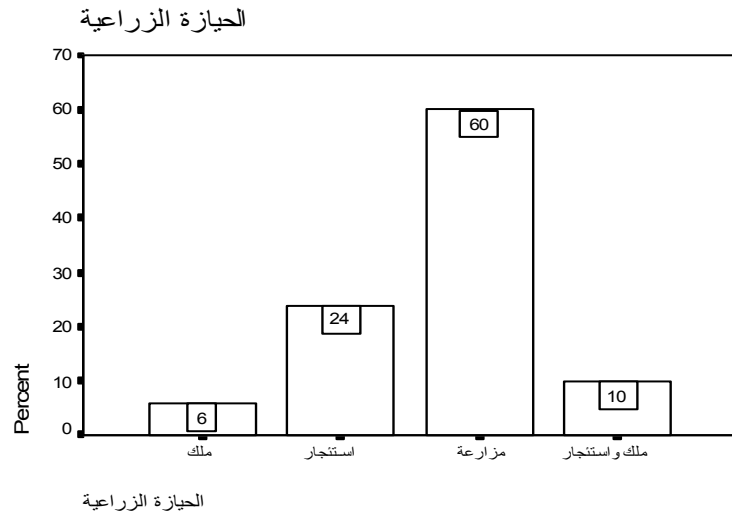
(1.4)



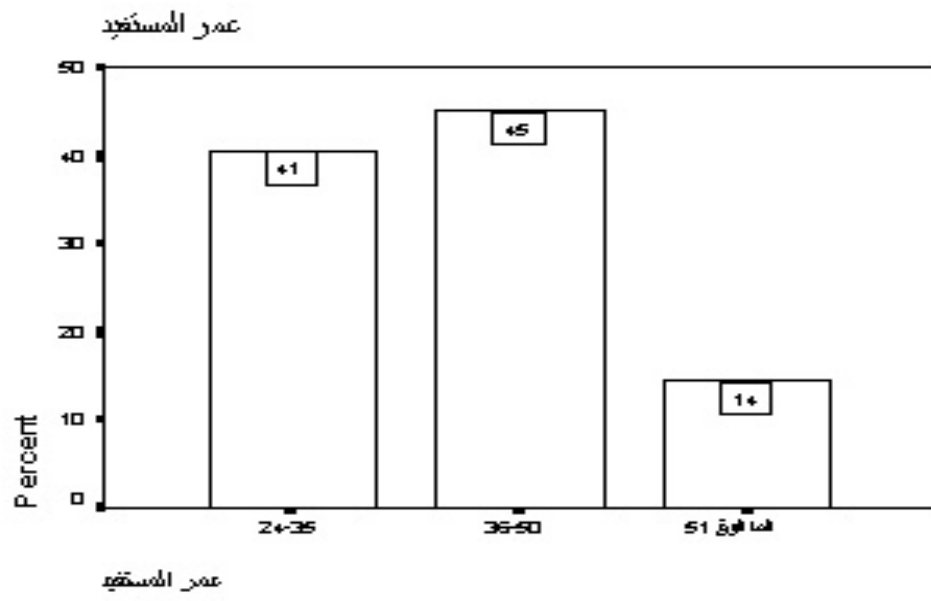
(2.4)



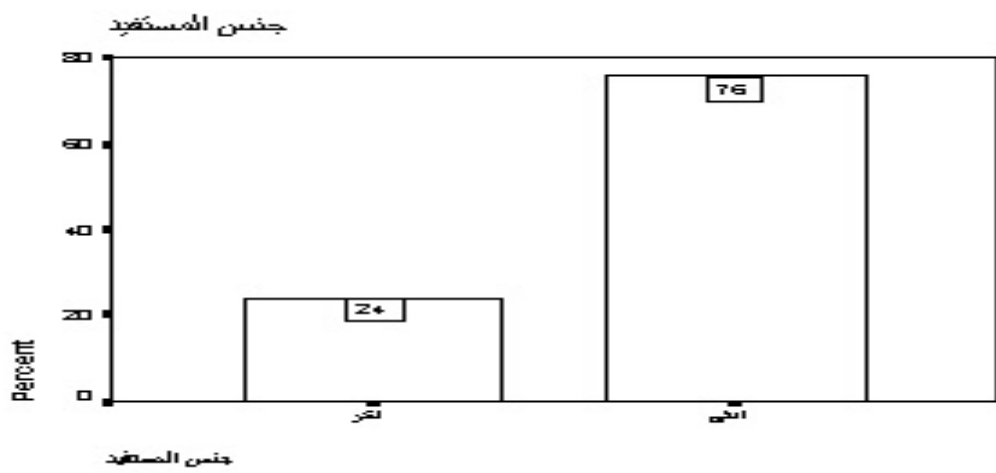
(3.4)



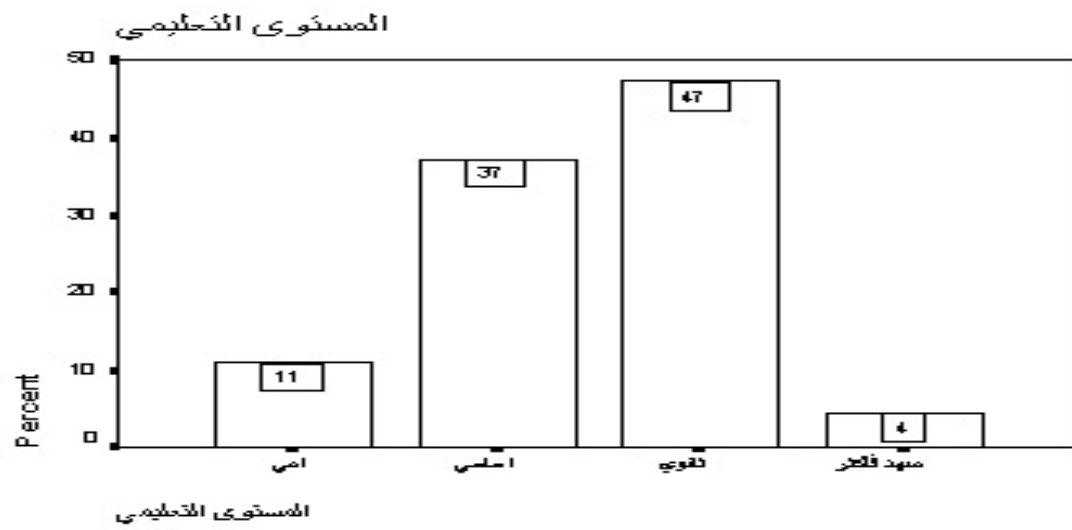
(4.4)



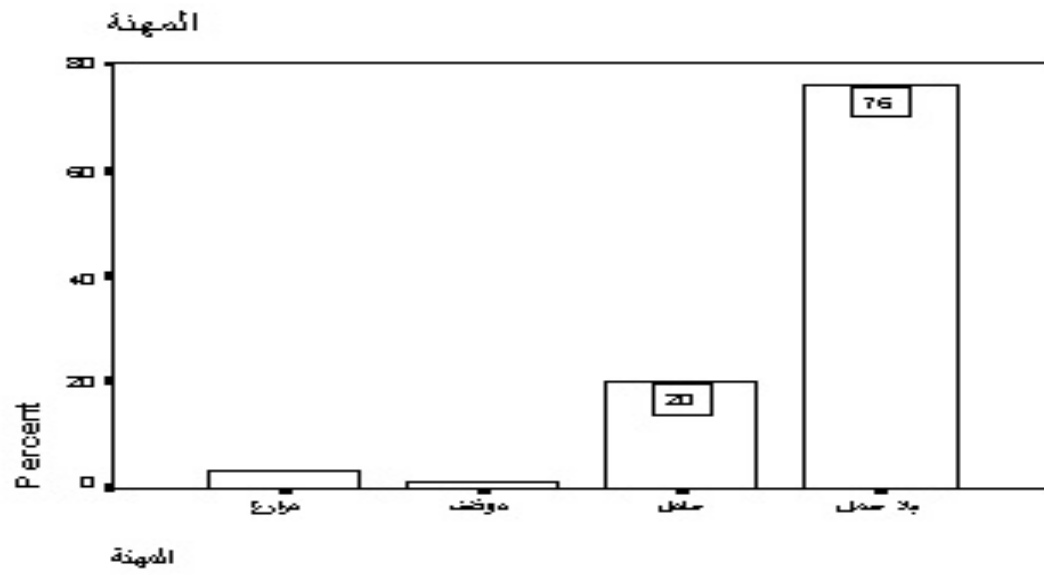
(5.4)



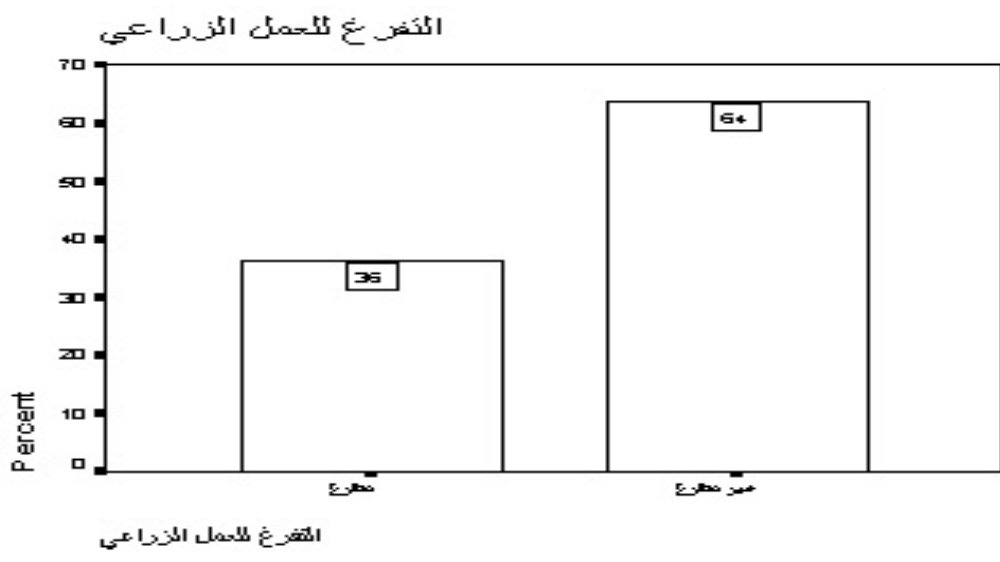
(6.4)



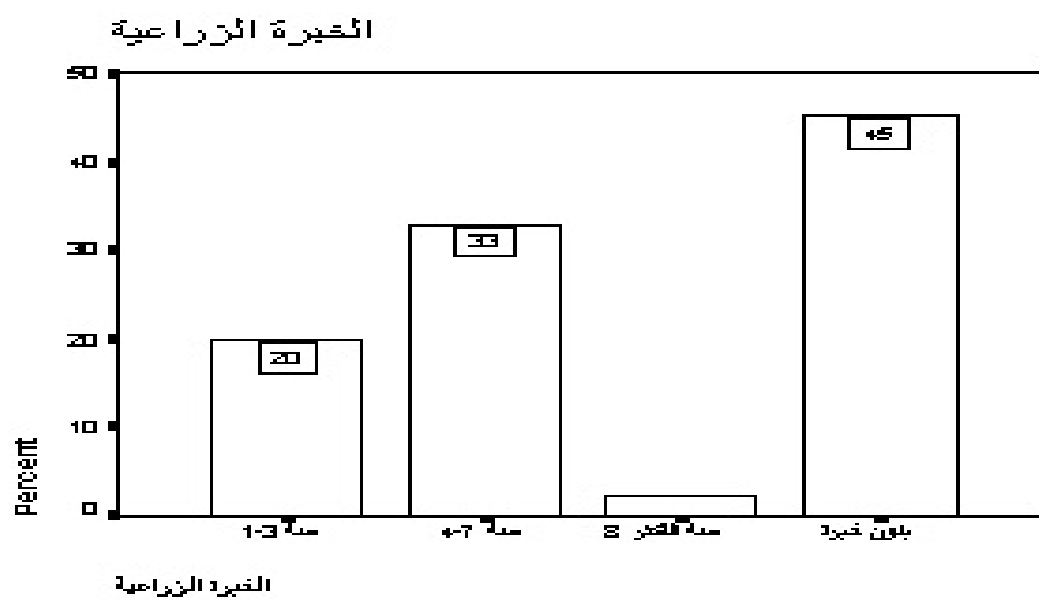
(7.4)



(8.4)



(9.4)



(10.4)

9	.	1.2
21	.	1.3
23		1.4
27	(X ²)	2.4
30		3.4
31		4.4

57		1.4
58		2.4
59		3.4
60		4.4
61		5.4
62		6.4
63		7.4
64		8.4
65		9.4
66		10.4

40		1
43	(X^2)	2
44	X^2	3
45	2	4
46	2	5
47	2	6
48	2	7
49	2	8
50	2	9
51	2	10
52	2	11

53	2	12
54	2	13
55	2	14.4
56		15

1	:	
1		1.1
4		2.1
5		3.1
5		4.1
5		5.1
7		6.1
8	:	
8		1.2
11		2.2
14		3.2
15		4.2
20	:	
20		1.3
21		2.3
22		3.3
22		4.3
23	:	
23		1.4
32		2.4
34		3.4
36		
38		
40		
67		

68	
69	
71	

.

The End.