



-

1930 هـ - 2009 م

:

-

-

:

/

/

/

۲۰۰۹ - ۱۳۹۰



جامعة القدس

عمادة الدراسات العليا

برنامج أساليب التدريس

إجازة الرسالة

تقويم برامج إعداد المعلمين في الجامعات الفلسطينية من وجهة نظر الخريجين

اسم الطالبة: ابتسام ميشيل بشارة سلسع

الرقم الجامعي: 20714356

المشرف: الأستاذ الدكتور أحمد فهميم جبر

نوقشت هذه الرسالة وأجيزت بتاريخ: 2009/09/12 من لجنة المناقشة المدرجة
أسمائهم وتواقيعهم.

التوقيع:
أحمد فهميم

رئيس لجنة المناقشة

1 - الدكتور: الأستاذ الدكتور أحمد فهميم جبر

التوقيع:
زيد قباجة

ممتحناً داخلياً

2 - الدكتور: زياد قباجة

التوقيع:
علم الدين الخطيب
2009
9/24

ممتحناً خارجياً

3 - الدكتور: علم الدين الخطيب

القدس - فلسطين

1930 هـ - 2009 م

•

.

.

.

.

.

•

.

.....

:

2009/09/12 :

:

.(2002)

.(2005)

:

.(Borg, & Gall, 2002)

:

.(France, 1979)

:

.

°

"

"

(2009-2008)

(287)

(81)

.(0.964)

Abstract

"An Evaluation of In-service Teacher Programs in Palestinian Universities from the Graduates' Perspectives"

This study aims at evaluating the in-service teacher programs offered by the Colleges of Education in Palestinian Universities from the graduates' perspectives. The researcher adopted the qualitative method, The study population included all the graduates of the Colleges of Education at the Palestinian Universities working as teachers in the schools of Bethlehem district. The questionnaire and the interviews were used as instruments. The questionnaire, which was distributed among all the teachers (n=287), included (81) items distributed among six main domains: admission, attitudes towards education, educational plan, academic and educational preparation, cultural preparation and field training, where the interview included six open-ended questions.

The validity and constancy were achieved and Cronbach alpha coefficient was (0.964).

The study revealed the following results:

Except for the average the student obtains in the General Certificate Examination, no other well-defined standards were adopted for admission.

Graduates have no positive attitudes towards teaching for several reasons.

The Educational plan, academic, educational and cultural preparation as well as field-training are all regarded as medium level from the graduates' perspectives, and include many positive respects. However, these programs are still in need for further development to suit the graduates' needs as well as the needs of the Palestinian society.

In light of these results, the researcher recommended that technological techniques should be integrated as a part of the programs, which should be developed to keep up with the novelties of the age. Teaching a foreign language should receive more stress and the faculty should coordinate their efforts to develop a comprehensive plan. Additionally, the field training period should be extended, and training itself should be developed through preparing well qualified cooperative teachers, and upgrading coordination between the universities and the schools of training. The universities should also adopt definite standards for admission.

•

•

•

•

•

•

:

.(1999)

(2006)

Sanders, Wright & Horn, 1997)

(Stronge, Tucker & Hindman, 2004 Goldhaber, 2002

(1966)

:

.(2005) .

(2000) (Gliessman)

:

(2000) (Kramer)

:

:

Competence-Based)

(Teacher Education

.(Reynolds, 1992)

Hollins, 1993)

.(Weigand, 1991 Houston, 1994

.(Scales, 1993)

(2000)

:

:(Insufficient Time)

-

:

-

:

-

:

-

(2000 2007)

(Holmes Group)

.(Pedagogy)

(Clinical)

. 10-8

.(Darling-Hammond,2003; Goldhaber 2002)

.(2001) .

.(2006)

.(2001) .

.(2001) .

(2005)

:

(1996)

:

:

:

(1

.

(2

.

(3

.

()

(4

.

:

(1

(2

(3

(4

(5

()

(6

(7

:

.

.

.

.

:

:

:

•

:

.

.(2008-2009)

:

•

•

•

•

•

•

:

:

(2001)

.(2003)

(2001)

: (1996)

-

-

-

-

-

.(2007)

: **1**

: **1.1**
(2005) (Anderson)

.(1986)

.(2006 2005)

.

:

1.2

.

:

-

.(2005)

.(2004) .

:

-

:

.(1998)

()

(%70)

(15)

Darling-Hammond &)

.(Cobb, 1995

.(Cobb, 1999)

1986

.(2005)

: **1.3**

: -

.(2005) .

: -

:

:

:

.(2005)

:

(1996)

•

.

:

•

.

:

•

:

.

.(1991)

) : : -

: (

:

:

1985) .

(1991

: 2

:
5 = (1+4) -

)

(...

()

(...)

:(4) -

.(1996)

/

:

: -

: -

.(1996 1996)

: -

.(2001)

: 3

:

-

-

.(Performance-based-teacher education)

-

.(Competence-based-teacher education CBTE)

-

/

-

.(2001) .(Competence Performance-based Teacher Education)

:

3.1

(Valli & Rennert-Arview, 2002)

(Competence-Based-Teacher Education)

.(Performance Standards-Based Teacher Education)

(Shepard, 2000)

(Behaviorism)

(Constructivism)

(Cognitivism)

(Prior Knowledge)

(Self-Monitoring)

(Time Awareness)

.(Darling-Hammond, Wise & Klein, 1995 Valli & Rennert-Arview, 2000)

(Direct Teaching)

(Wenzlaff & Wiese, 2004) .

/

.
":
/

.(2001) "

(Delandshere,1996; Darling-Hammond, 2000)

(Facilitator)

Bransford, Brown & Cooking,) .

(2000

.(Russell & McPherson, 2001) (Accountability)

/

.(2003)

: **3.2**

(2001)

(Cognitive competencies) :

. - -

(Performance competencies) :

(Affective competencies) :

(1999)

.(2000)

.(1990)

: (Bowie)

.(Webb, 2008) (Teamwork)

.(2001)

: **4**

: **4.1**

: -

(Self Reflection)

-Critical Consciousness-

.(Gay & Kirkland, 2003)

()
)

(

.(2005)

:

: -

: -

.(2001)

: -

:

•

•

•

•

.(2001)

: -

.(2005) .

:

4.3

.(2005)

.(2005)

⋮

(2005)

(2005)

(2001)

:

(1

(2

(3

(4

(5

(6

(7

⋮

:

:

(Problem Solving)

(Critical Thinking)

(Reflection)

(Self-Assessment)

.(Webb, 2008)

/

(2005 2005) .

(Beck & Kosnick, 2002)

:(Emotional Support)

:(Peer Relationship)

:(Collaboration)

Flexibility In Teaching Content)

-

(And Method

:(Feedback) :

-

-

-

:

4.4

: (2000)

:

-

-

-

-

(2005 2005 1999)

:

:

5

:

5.1

(1996)

:

:

/ :

)

:

:(/

/

(1

(2

(Academic and Professional Faculty)

(3

(4

(5

(6

(7

:

:

•

•

•

•

(1996)

: **5.2**

:

:

5.2.1

(2005) (Bullough, Clark & Patterson, 2003)

:

(Candidate knowledge, skills and : (1

:dispositions)

(pedagogical)

:(Assessment System And Unit Evaluation) (2

:(Field Experience And Clinical Practice) : (3

:(Diversity) : (4

(Faculty Qualifications, : (5

:Performance And Development)

:(Unit Governance And Resources) : (6

(2005) (Holm & Horn)

(NCATE)

:

teaching strategies

.student diversity

learning styles

()

5.2.2

:

(Quality Assurance Agency, 2006)

()

)

.(2007)

(

:

:(Academic Standards)

:

(Intended Learning Outcomes) (ILOs)

•

(Curricula) •

(Student Assessment) •

()

(Student Achievement) •

: (Quality of Learning Opportunities) :

(Teaching and learning) •

)

(

.(2007)

(Student Progression) •

(Learning Resources)

•

(Quality Assurance and Enhancement)

•

) ()

.(2007

:

:

(2000) 2010

:

(A Well-Qualified Profession)

(Pedagogy)

(lifelong learning)

(Mobile Profession)

(Mobility)

A Profession based on)

(Partnerships

/

.(2007)

:

(Sustained Innovation)

(R & D)

.(2007)

:

(Statement of Aims)

(Performance Indicators)

(Self-Evaluation)

(Quality Assurance Processes)

(2005) .(QA Inspection)

:

Teacher education accreditation)

National)

(council (TEAC)

(Council for Accreditation of Teacher Education (NCATE)

:

.(2005) .

(2005) :

National Council - (NCATE)

()

.for Accreditation of Teacher Education

:

.NCATE

-

NCATE

:

NCATE

2000

.
.(2005)

"

"2000/1999

:

2005

7

(

)

(

)

.(2005) .

:

-

-

-

.(Outcomes-Based Approach)

:

-

.

-

.

-

.

.

:

7

:

(Microteaching) :

(1

()

:

.(2007)

.(2005)

.(1998) (Feedback)

()

.(2006)

(Self-Learning) (2

.(2005)

.(2005) .

:

-

-

.(2005) .

-

:

.(2005)

:

:

.(2005 2005)

:

.

.

.(2006) .

.

.

:

.

.

)

.(2006

:

:

(1

.

)

.

%60-25

.(

:

(2

.% 72-48

.%27

:

(3

.(2007) .

(2006)

:

(1

(2

(3

(4

)

.(2007

:

"

"

"

2005

"

(UNDP)

(Regional Bureau for Arab States)

:

(1

(QAA)

(2

..

(3

(4

:

13

24

)

50 (

: **UNDP-RBAS (Dec., 2006)**

16

5

-

-

-

-

-

(2007)

: (1996)

(2006)

(1999)

.(2007)

(2007)

.(2007)

(2007)

:

:

-

:(experiential)

-

.(holistic and meaningful)

-

(expressive)

-

-

(Reflective)

-

(Collaborative)

-

(social)

-

(Cognitive)

-

)
(Developmental)

(

-

(Constructivist)

-

(Challenging)

-

:

:

:

:(1982)

:(1984)

:

(117)

:

•

•

-
-

:(1990)

(276 134)

:(1992)

(1994)

(100)

(%60)

(% 34.8)

:(1996)

%43

%57

:(2000)

(40)

(122)

1999/1998

:

•

•

•

:(2000)

:(2002)

:

•

•

:(2004)

:

" "

:(2004)

(548)

1997-1996

:(2005)

(217)

:

(72)

•

•

•

•

:(2005)

:

(814)

.(

)

(512)

(123)

:

•

•

•

•

•

:(2006)

(45)

:

•

()

•

•

•

•

(20)

•

) :(2006)

.(

(90)

:

) :(2006)

/

/

.(2005-2004)

:

) :(2007)

.(

:

:(Welch,1995)

.

(Gibson & Dembo, 1984)

(31)

.

(23)

(18)

:

.

/

•

•

(frustrated)

•

:(Brooker & Hansford, 1997)

:

.

•

•

:(Pepper, 1997)

:

•

•

•

:

•

•

•

:(Homan, 1997)

:

:

•

•

:(Blount, 1997)

(84)

:

:(Blosser, 1997)

(23)

.Ohio

:

.(Focus Group)

•

•

•

•

•

:(1997) Tom

:

(1

(Vague)

(Impractical)

(2

.(Fragmented)

(3

(Muddled)

(4

"

(Cobb, 1999)

"

:

:(Grove & Struddler, 2001)

-
-
-

(2002) :(Beck & Kosnic, 2002)

(11)

:

•

•

•

•

•

(Churchill & Walkington ,2003)

:

(480)

(8)

:

•

•

•

•

•

:(Baird et al, 2006)

(1258)

(100)

:

•

•

•

•

:(Goktas et al., 2008)

(111)

(1429)

(1330)

(6)

(6)

:

•

•

•

:(Hammond & Crosson, 2009)

(40)

:

•

•

•

(Allen, 2009)

.

:

.

•

•

•

•

.

:

:

-

.(2004

2000

)

-

Baird 2007

2006

2005

)

.(2009 Hammond & Crosson 2006

) -

2006 2004 2002 1996 1990

Grove & Homan , 1997 Brooker & Hansford,1997

(2006 2001,Studdler

Churchill 2006 2005 2005)

.(2008 Goktas & WAlkington , 2003

-

2002 1996)

Churchill & 1995 Welch 2006 2005

(2009 Allen 2003 WAlkington

2003 Churchill & WAlkington 1997 Tom 1982)

1984) (2008 Goktas

.(1992) 1996

-

1997 Brooker & Hansford 2006 2004)

(2009 Allen 2001 Groove& Studdler

2006) :

2001 Grove & Studdler 1997 Blosser 1997 &Broker Hansford

(1990) (2006

.(2002 Beck & Kosnic 1997 Pepper 2004)

-1

-2

-3

-4

-5

•

•

-
-
-
-
-
-
-
-

.

:

:

.

:

.

:

:

:	.2009/2008	
.		(104) .1
.		(102) .2
.		(35) .3
.		(16) .4
.		(10) .5

(20) .6

(1)

:(1)

17.42	50		
82.58	237		
100	287		
17.42	50		
73.87	212		
5.57	16		
3.14	9		
100	287		
25.78	74	5	
41.46	119	10-5	
32.75	94	10	
100.00	287		
25.87	74		
74.13	212		
100	286		
61.32	176		
28.57	82		
10.10	29		
100	287		
36.24	104		
35.54	102		
12.20	35		
5.57	16		
6.97	20		
3.48	10		

(287)

:

:

:

:

:

:

:

:

(81)

(5)

:

-

(19)

:

-

(16)

:

-

(15)

:

-

(8)

:

-

(18)

:

-

(4)

(

)

(17)

:

:

(1

(2

(3

(4

(5

(6

:

(5)

:

(Cronbach Alfa)

(0.964)

.(2)

:(2)

0.840	
0.919	
0.932	
0.892	
0.947	
0.964	

:

()

2.33-1.00

-

3.67- 2.34

-

5- 3.68

-

10-5

10

(1)

(3)

(2)

(2)

:

-

(287)

. 176 : ○
. 82 : ○
. 29 : ○

:

(Cronbach Alpha)
(SPSS Statistical Packages for Social
Sciences)

•

•

:

4.1

(3)

)

:(3)

.(

84.67	243	
65.51	188	
56.45	162	
52.26	150	
18.82	54	

(84.67%)

.(18.82%)

:

.(5) (4)

:(4)

	0.45	3.82	.	2
	0.64	3.62	.	6
	0.62	3.45	.	4
	0.67	3.38	.	3
	0.69	3.21	.	5
	0.49	3.53	.	

(4)

(3.53)

:(5)

	0.53	4.65		2
	0.57	4.52		14
	0.63	4.40		16
	0.78	4.36		1
	0.69	4.35		13
	0.75	4.32		10
	0.86	4.02		9
	0.79	4.00		12
	0.92	3.94		17
	0.88	3.94		15
	0.86	3.85		18
	0.93	3.72		11
	0.91	3.70		19
	1.11	3.34		3
	1.12	3.30		8
	1.08	3.17		6
	1.06	3.16		5
	1.14	3.06		4
	1.11	2.69		7
	0.45	3.82		

(5)

(14) (2)

(3.82)

(7) (4)

(4.52) (4.65)

(2.69) (3.06)

:

.(6)

:(6)

	0.94	3.81	(4)	5
	0.86	3.67		11
	0.86	3.66		1
	0.90	3.52		14
	1.08	3.49		8
	0.89	3.46		3
	0.92	3.45		2
	0.88	3.40		4
	1.04	3.36		7
	1.08	3.26		10
	1.13	3.23		16
	1.14	3.21		15
	1.13	3.20		6
	1.06	3.20		9
	1.05	3.20		12
	1.08	3.01		13
	0.67	3.38		

(6)

.(3.01) (3.81)

:

.(7)

:(7)

	0.73	3.80		15
	0.72	3.77		4
	0.83	3.71		7
	0.77	3.70		3
	0.84	3.56		5
	0.88	3.54		6
	0.80	3.52		11
	0.86	3.52		8
	0.77	3.48		9
	0.98	3.47		10
	0.95	3.27		12
	0.97	3.22		13
	0.86	3.15		2
	0.93	3.12		14
	0.99	2.87		1
	0.62	3.45		

(4) (15)

(7)

(3.77) (3.80)

(3.12) (2.87)

(14) (1)

:

.(8)

:(8)

	0.79	3.55		7
	0.88	3.42		3
	0.93	3.32		6
	0.87	3.31		2
	0.89	3.16		1
	0.95	3.01		8
	0.96	2.99		5
	1.06	2.88		4
	0.69	3.21		

(8)

:

.(9)

:(9)

	0.81	3.81		10
	0.82	3.79		4
	0.91	3.78		18
	0.92	3.77		1
	0.79	3.77		12
	0.85	3.75		5
	0.80	3.73		16
	0.80	3.67		6
	0.85	3.67		7
	0.79	3.67		8
	0.88	3.61		13
	0.83	3.53		11
	0.90	3.51		3
	0.92	3.48		17
	0.91	3.43		14
	1.11	3.31		15
	1.07	3.16		2
	0.95	3.01		9
	0.81	3.68		

(9)

(4) (10)

.(3.01) (3.81)

(3.71) (3.81)

:

(10)

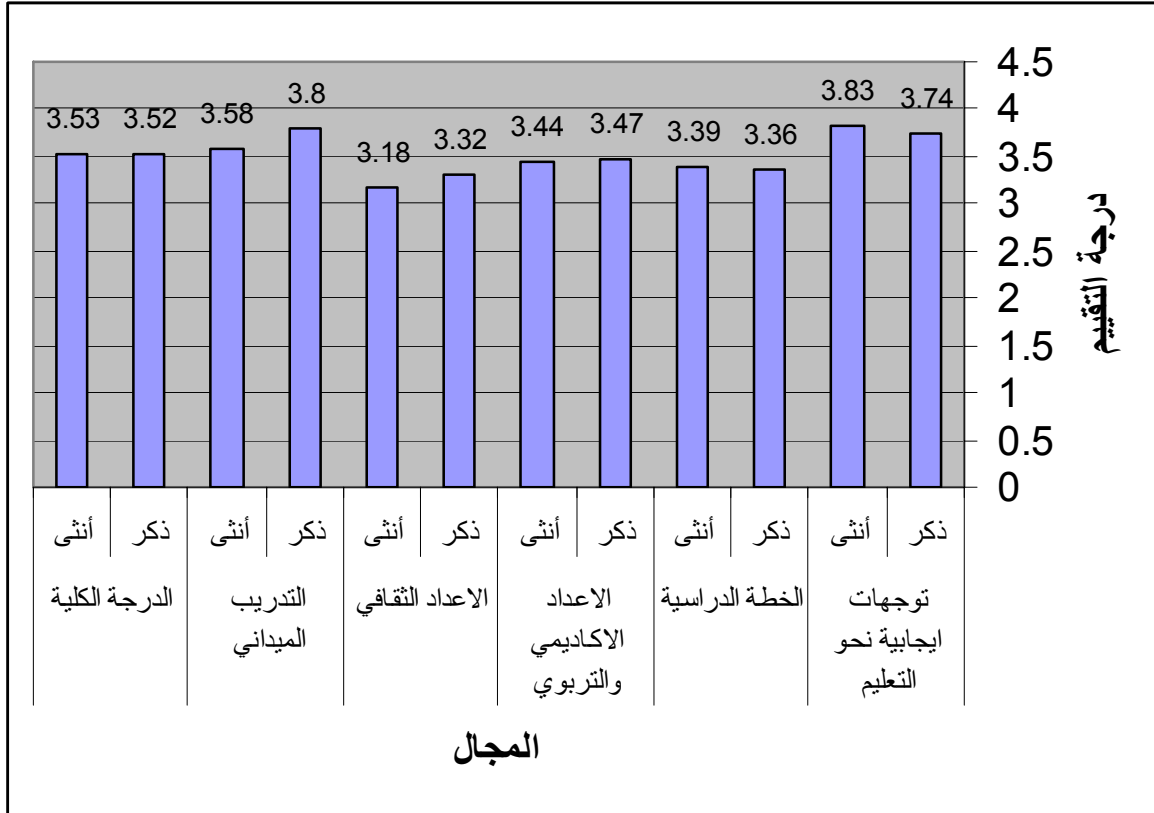
:(10)

	0.42	3.74			2
	0.46	3.83			
	0.67	3.36			3
	0.68	3.39			
	0.66	3.47			4
	0.61	3.44			
	0.72	3.32			5
	0.68	3.18			
	0.52	3.80			6
	0.66	3.58			
	0.45	3.52			
	0.50	3.53			

(10)

.(1)

(1):



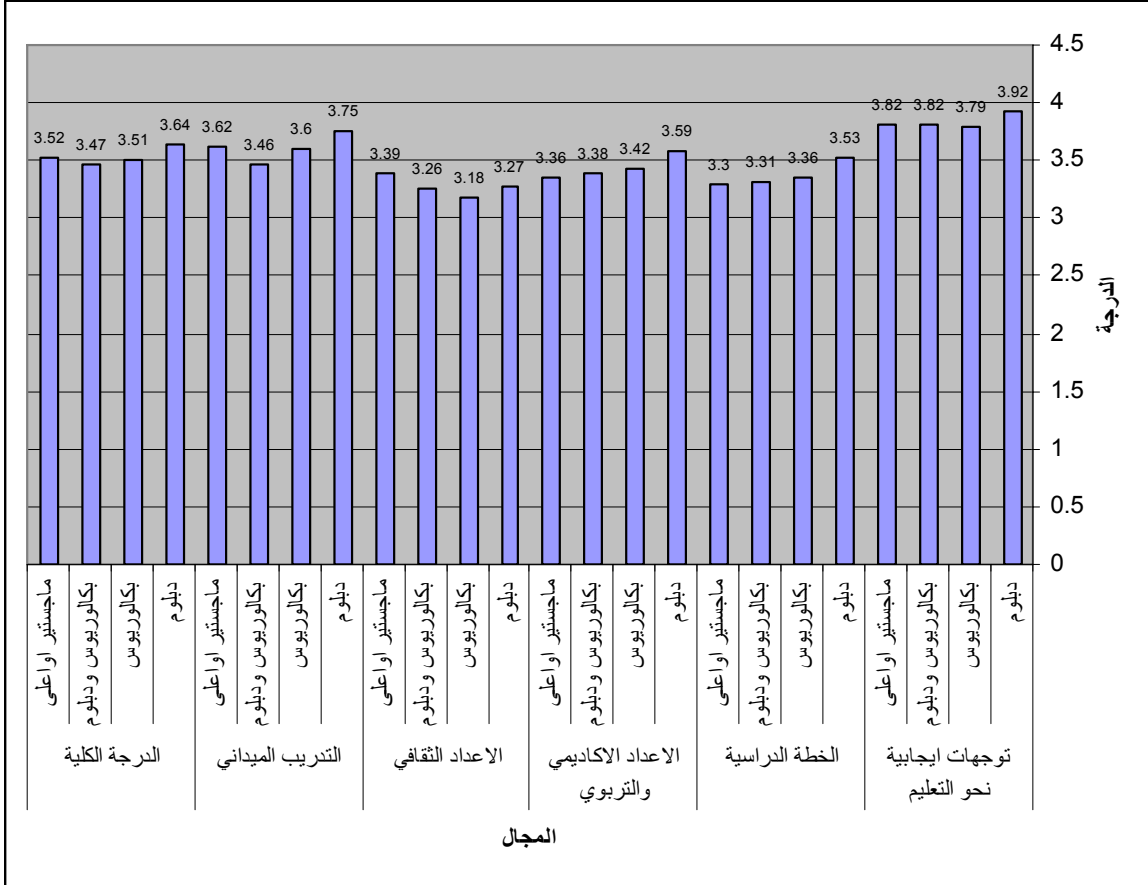
:(11)

	0.43	3.92			2
	0.47	3.79			
	0.33	3.82			
	0.27	3.82			
	0.63	3.53			3
	0.67	3.36			
	0.84	3.31			
	0.58	3.30			
	0.66	3.59			4
	0.58	3.42			
	0.76	3.38			
	0.80	3.36			
	0.73	3.27			5
	0.68	3.18			
	0.75	3.26			
	0.72	3.39			
	0.58	3.75			6
	0.64	3.60			
	0.79	3.46			
	0.66	3.62			
	0.52	3.64			
	0.48	3.51			
	0.57	3.47			
	0.44	3.52			

(11)

.(2)

: (2)



:(12)

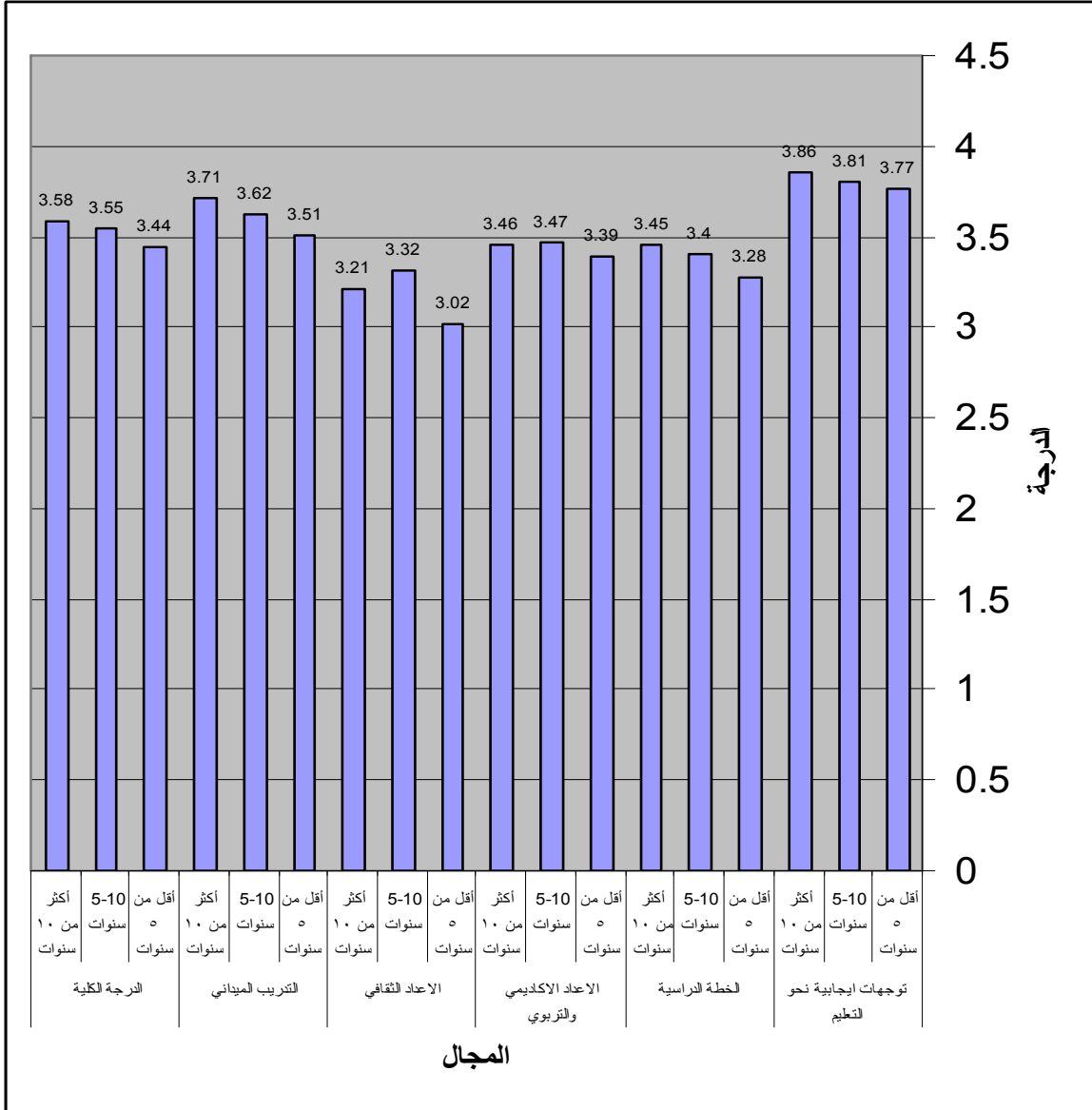
	0.42	3.77	5		2
	0.44	3.81	10-5		
	0.49	3.86	10		
	0.66	3.28	5		3
	0.70	3.40	10-5		
	0.65	3.45	10		
	0.55	3.39	5		4
	0.64	3.47	10-5		
	0.63	3.46	10		
	0.61	3.02	5		5
	0.72	3.32	10-5		
	0.69	3.21	10		
	0.60	3.51	5		6
	0.69	3.62	10-5		
	0.59	3.71	10		
	0.45	3.44	5		
	0.50	3.55	10-5		
	0.50	3.58	10		

(12)

10

.(3)

(3):



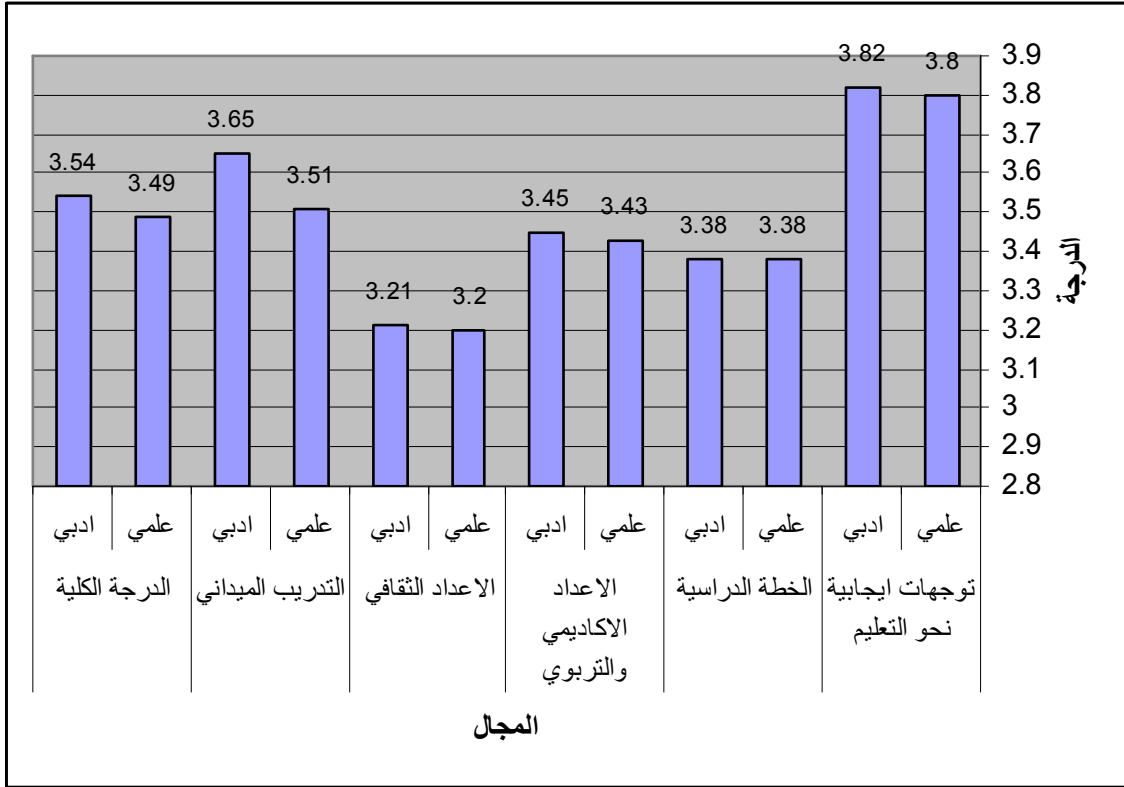
:(13)

	0.42	3.80			2
	0.47	3.82			
	0.63	3.38			3
	0.69	3.38			
	0.53	3.43			4
	0.65	3.45			
	0.53	3.20			5
	0.74	3.21			
	0.68	3.51			6
	0.62	3.65			
	0.43	3.49			
	0.51	3.54			

(13)

.(4)

(4):



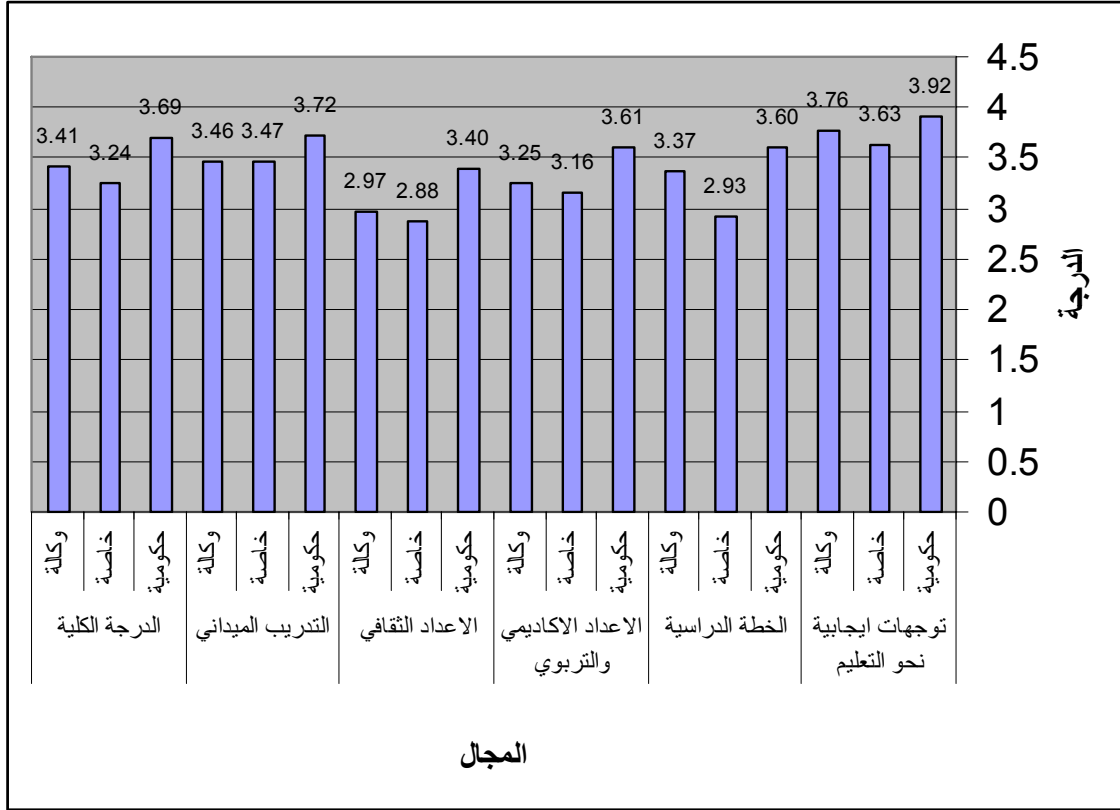
:(14)

	0.41	3.92			2
	0.47	3.63			
	0.50	3.76			
	0.58	3.60			3
	0.67	2.93			
	0.58	3.37			
	0.59	3.61			4
	0.54	3.16			
	0.64	3.25			
	0.65	3.40			5
	0.57	2.88			
	0.83	2.97			
	0.65	3.72			6
	0.60	3.47			
	0.57	3.46			
	0.43	3.69			
	0.49	3.24			
	0.42	3.41			

(14)

.(5)

: (5)

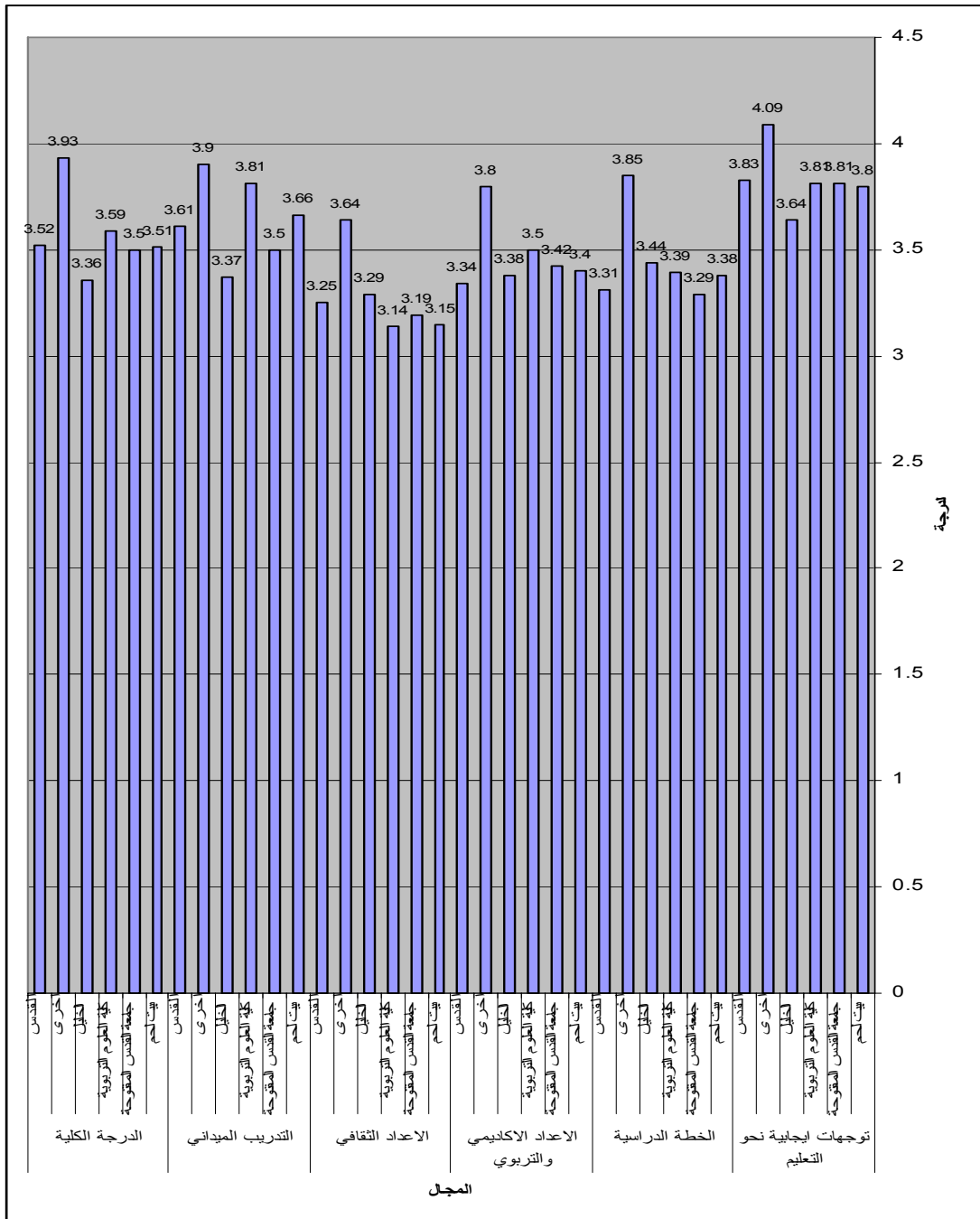


:(15)

	0.46	3.80			2
	0.46	3.81			
	0.46	3.81			
	0.50	3.64			
	0.29	4.09			
	0.41	3.83			
	0.60	3.38			3
	0.76	3.29			
	0.68	3.39			
	0.62	3.44			
	0.43	3.85			
	0.64	3.31			
	0.53	3.40			4
	0.66	3.42			
	0.62	3.50			
	0.58	3.38			
	0.71	3.80			
	0.70	3.34			
	0.64	3.15			5
	0.69	3.19			
	0.78	3.14			
	0.77	3.29			
	0.68	3.64			
	0.67	3.25			
	0.53	3.66			6
	0.72	3.50			
	0.67	3.81			
	0.65	3.37			
	0.59	3.90			
	0.54	3.61			
	0.43	3.51			
	0.55	3.50			
	0.51	3.59			
	0.36	3.36			
	0.47	3.93			
	0.48	3.52			

(6).

(6):



•

•

•

•

•

•

•

•



.

.

:

:

:"

"

" (%84.67) "

.(%56.45) "

.(%52.26)

(%18.82)

" "

(2004)

(2000)

.

:

.

(10.500) 2007

(2000)

.

:

"

:

"

"

"

.(2.65)

(2006)

(1995) Welch

(1995) Welch

:

"

"

.(3.81) (3.01)

)

(3.36

)

.(3.23

)

(3.26

)

(3.67

)

(3.52) (3.40
(3.01) (3,66)
) (3.20)
(3.49) (3.21

(%60) (1994)
(%43) (1996)

(2000)

(2006)

Hammond & Crosson,)

.(2009

:

"

"

.(3.45)

(3.52)

(3.47)

) (3.27)

) (3.12) (3.22

.(2.87

(3.25) (3.15)

.(3.54) (3.48)

(1996)

(2000)

(2006)

(Cobb, 1999)

:

"

)

(3.21)

)

(3.16) (3.32) (3.42)

(3.01) (3.31)

) (2.99)

.(2.88

(2000)

.(Darling-Hammond , 1997)

(1999) Cobb

.

.

:

"

)

.(3.68

)

(3.79)

(3.81

(3.77)

(3.78)

)

(3.75)

(3.67)

(3.73

.(3.67)

(3.67)

) (3.61)

)

(3.48

.(3.48

(3.16)

(3.31) (3.53)

.(3.01)

Brooker & Hansford,)

(Gove & Struddler, 2001) (1997

Brooker&)

(Pepper, 1997) (Hansford, 1997

.(Blosser, 1997)

2006)

.(Blosser ,1997 Brooker & Hansford, 1997 2006

(2006)

(Blosser, 1997; Grove & Struddler, 2001; Allen, 2009)

Pepper,1997; Beck &)

(Kosnic, 2002

.(Blosser, 1997)

:

"

"

(10)

.

.

.

:

.

.

:

"

"

%65

%75-70

:

: :
()

:

:

:

(1

(2

(3

(4

(5

(6

"

" .(1999) .

.(2006) .

.(2007) .

:

"

.(2000).

:

:

.(2005) .

.(2004) .

.10-1

2004

13-11

.(1986) .

"

" .(1996) .

.128

.(2000) .

.2000

: .(2007) .

.(1999) .

: .(2000) .

.(2002) .

.(2007) .

: - .(1992) .

.(1982) .

" .(1996) .

.748 (3) ."

.(2005) .

.(2006) .

/

2

.(1988) .

30-27

.(2006) .

" .(2006) .

.(2007) .

.(1996) .

.(1990) .

.232-192 (4) 2

.(2003) .

:" "(2001) .

.(2004) .

.239-219 (1) 21

.(2006) .

()

.(2007) .

"

() .(1999) .

.(1985) .

1 .(1991) .

" .(1990)

.1919-1879

.(2006) .

.(1989) .

.338-294 4

-

" .(1991) .

"

.(1996) .

-95 58

.130

.(2005) .

.

.(1994) .

.56-38 (13)

() .(2003) .

.

" .(2002) .

"

.(2001) .

.

() .(2001) .

.

) " .(1998) .

.

" :.(1982) .

"

.1080-1077 (4) . (1996) .

. : .(2005) .

.(2001).

.(1985) .

.1985

.(2007) .

etejahatmoasera.<http://www.moe.edu.kw/pages/sectors/06/01/derast>

" .(1996) .

"

.(2002) .

()

.101-98 :

www.mohe.gov.ps

.(2007) .

.(2000) .

.2000

"

" .(1996) .

.

.(2005) .

. 22-35

References:

- Allen, M. (2009). Valuing Practice over theory. *Teaching and Teacher Education: An International Journal of Research and Studies*. 25 (5). 647-654 Jan, 2009.
- Arthur, E. Wise. (2001). Creating a High-quality Teaching Force, *Journal of Teacher Education*, 52: 244-255
- Beck, C. & Kosnick, C. (2002). Components of a good practicum placement: Student Teacher Perceptions. *Teacher Education Quarterly*, Spring , 2002.
- Baird, W., Prather, P. Finson, K. & Oliver, S. (2006). Comparison of perceptions among rural versus non-rural secondary science Teachers: A multistate Survey, *Science Education*, 78 (6), pages 555-576.
- Blosser, C. (1997). Educating Tomorrow's Teachers: re-searching literacy teacher education in diverse settings, *DAI* 58/7.
- Borg, W., Gall, M. (2002). **Educational Research: An Introduction**. New York: Prentice Hall.
- Bransford, J., Brown, F. & Cocking, J. (2000). **How People Learn**. Washington, D.C. National Research Academy.
- Brooker, R. & Hansford, B. (1997). The Practicum in the Landscape of Teacher Education: Does it Meet Student Expectations?/ the 27 Annual Conference of the Australian.
- Churchill, a. & Walkington, J. (2003). **A Longitudinal Study of Learning-to-Teach**. University of Southern Queensland University of Canberra.
- Cobb, B. (1999). An International Comparison of Teacher Education. **Eric digest** 436486

- Darling-Hammond, L.(2000). Solving the dilemmas of teacher supply, demand and standards: How can we ensure a competent, caring, and qualified teacher for every child? National Commission of Teaching and America's Future. **ERIC** Document Reproduction Service. ED 463 637.
- Darling-Hammond, L. Wise, A.E. & Klein, S.P. (1995). **A License to Teach: Building a Profession for 21st Century Schools**. Boulder , Co: West view Press.
- Darling-Hammond, L. & Cobb, V. (1995). **Teacher preparation and professional development in APEC members: A comparative study**, Washington , DC: U.S. Department of Education. ED 383 683.
- Darling-Hammond, L. (2003). **Does Teacher Preparation Matter?**
Available at the website
www.ncate.org/documents/edNews/Standford Teachers Certification.
- France, Evelyn. (1979). Two year Assessment of selected performance competencies in the Carolina state college Elementary teacher education program, **Dissertation Abstract Int**, vol1.40 no7.
- Delandshere, G. (1996). From static and prescribed to dynamic and principled assessment of teaching. **The elementary School Journal**, 97 (2), 105-120.
- Gay, G. & Kirkland, K. (2003). **Developing Cultural Consciousness and self reflection in preservice teacher education: Theory and Practice**, 42(3) pp 181-187
- Goktas, Yuksel. Yildrim, Zahide. Yildrim, Soner.(2008). A Review of Related Cources in Pre-service Teacher Education Programs. **Asia Pacific Education Review**, 9(2) p.168-179 April 2008.

- Goldhaber, D. (2002). Does Teacher Certification Matter? High School Teacher Certification Status and Student Achievement. **Educational Evaluation and Policy Analysis**, 22(2) 129-145.
- Grove, K. & Strudler, N. (2001). Cooperating Teacher Practice in Mentoring Student Teacher toward Technology use. Available at URL:<http://www.fastlache.nsf.Gov\ServletShawaward?>
- Hammond, M. & Crosson, P. (2009). Why do some student teachers make very good use of ICT? An Exploratory case study. **Technology, Pedagogy and Education**, 18(1), p.59-73 March 2009.
- Hollins, E. (1993)." Assessing Teacher Competence for Diverse Populations", **Theory and Practice**. 32(2). pp.93-99.
- Homan, E. (1997). An Investigation of the Multicultural perceptions of selected secondary social studies teachers, **Dissertation Abstracts International**, Vol 58/7.
- Houston, Robert. (1994). The Role of the University in meeting the needs of First Year Teachers, **Dissertation Abstracts International**, 55(5), A 1916.
- Millman, J. & Darling-Hammond, L. (1991). **Teacher Education** , Library Congress, U.S.A.
- NCATE.(2000). **NCATE 2000 Standards**. Washington, DC: Author. Available on NCATE's Web site, www.ncate.org
- Pepper, S. (1997). An Evaluation of the Elementary Senior Block field Experience Program at Missisipi State University, **Dissertation Abstarcts International** , Vol 58/7.
- Reynolds, A. (1992). " What is Competent Beginning Teaching? A Review of the Literature". **Review of Education Research**. 62(1). pp1-35.

- Russell, T. McPherson, S. (2001). **Indicators of Success in Teacher Education: A Review and Analysis of Recent Research**, prepared for the 2001 Pan-Canadian Education Research Agenda Symposium, May 22-23 2001 Laval University, Quebec City.
- Sanders, W., Wright, P. & Horn, G. (1997). Controlling for Student Background in Value-Added Assessment of Teachers. **Journal of Education and Behavioral Statistics**, 29(1) pp 37-65.
- Scales,P. (1993). "How Teachers and Education Deans Rate the Quality of Teacher Preparation for Middle Grades", **Journal of Teacher education**.44 (5) pp35-41.
- Shepard,L.A. (2000). The Role of Assessment in Learning Culture. **Education Researcher**, 29 (7), 4-14.
- Stronge, J. Tucker, P. & Hindman, J. (2004). Handbook for Qualities of Effective Teachers. Available at the website **<http://books.google.com/books?ht=en&lr=&id=QLEwzRbLeCWCoi=fnd&pg=PR7>**
- Tom, A. (1997). **Redesigning Teacher Education**. Albany, NY: state University of New York Press. Available at <http://books.google.com/books?id=CAHoAD->
- UNDP-RBAS (2006). Quality Assessment of Education programs in Arab Universities. **Regional Overview Report**.
- Valli, L. & Rennert, R. (2000). Identifying Consensus in Teacher Education Reform Documents: A Proposed Framework and Action Implications. **Journal of Teacher Education** , 51(1) pp. 5-17.
- Valli, L. & Rennert, R. (2002). New Standards and assessments; Curriculum Transformation in teacher education. **Curriculum Studies**, 34 (2), 201-225.

- Weigand, J. (1991). **Developing Teacher Competencies**. New Jersey:Prentice-Hall I.
- Welch, A. (1995). The Self-efficacy of primary Teachers in art education. **Issues in Educational Research**, 5 (1) 71-84.
- Wenzleff, T.L. & Wieseman, K.C. (2004). Teachers need Teachers to Grow, **Teachers Education Quarterly**.
- Wise, A. E. & Liebbrand, J.A. (2000). Standards and Teacher Quality. **Phi Delta Kappan**, 81 (8), 612-618

(1

(2

(3

(4

(5

(6

ملحق رقم 1

بسم الله الرحمن الرحيم

Al-Quds University
Faculty of Educational Science
Graduate Studies Programs



جامعة القدس
كلية العلوم التربوية
برامج الدراسات العليا

الرقم: ب د ع/09/03/384/12
التاريخ: 2009/03/17

معالي الأستاذة لميس العلمي المحترمة
وزيرة التربية والتعليم العالي

الموضوع: تسهيل مهمة

تحية طيبة وبعد،،

نقوم الطالبة: ابتسام ميشيل بشارة سلسع ورقمها الجامعي (20714356)، بدراسة تتعلق
برسالة ماجستير، بعنوان

" تقييم برامج إعداد المعلمين في الجامعات الفلسطينية من وجهة نظر خريجها "

لذا يرجى من حضرتكم تسهيل مهمة الطالبة المذكورة أعلاه والتعاون معها.

شاكرين لكم حسن تعاونكم

والله الموفق

د. محسن عدس
مُنسق برامج الدراسات العليا - كلية العلوم التربوية
Dep. of. Edu. & Psi.
AL-QUDS UNIVERSITY
القسم التربوي وعلوم النفس

بِسْمِ اللَّهِ الرَّحْمَنِ الرَّحِيمِ

Palestinian National Authority
Ministry of Education & HE
Directorate of Education \Bethlehem



السلطة الوطنية الفلسطينية
وزارة التربية والتعليم العالي
مديرية التربية والتعليم/بيت لحم

الرقم: ب/1/3/ 2125
التاريخ: 13/ 5/ 2009
الموافق: 19/ جمادى الاول / 1430هـ

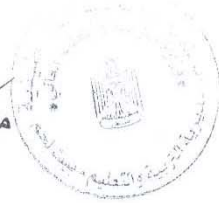
مديرة مدرسة رفح س / م
تحيةة طيبة وبعد،،،
ث. المحترم/ة

الموضوع: تسهيل مهمة

مرفق طيه الاستبانة الخاصة بالباحثة ابتهام ميشيل سلسع راجياً تعبتتها من قبل المعلمين والمعلمات المرفقة اسماؤهم واعادتها الى قسم التعليم العام في المديرية في موعد أقصاه نهاية دوام يوم الخميس الموافق 2009/5/21 .

مع الاحترام

أ. عبد الله شكارنة
مدير التربية والتعليم



التعليم العام
ن. ح/ف.ن

هاتف (00970-2741271/2) / فاكس (00970-2-2744392) Fax



عاصمتها الثقافة العربية
Capital of Arab Culture
القدس - QUDS
2 0 0 9

القدس

سار سري

ملحق رقم 3

بِسْمِ اللَّهِ الرَّحْمَنِ الرَّحِيمِ

Palestinian National
Authority
Ministry of Education & H.E
Directorate of Education \Bethlehem



السلطة الوطنية الفلسطينية

وزارة التربية والتعليم العالي

مديرية التربية والتعليم/بيت لحم

مدرسة مراح معلا الأساسية المختلطة

رقم الكتاب: ت ب ع / 116 / 1 / 3 / 83

التاريخ: 2009 / 5 / 27 م.

الموافق: - / 3 / جمادى الآخرة / 1430 هـ.

الرقم الوطني: 22112043
رقم الهاتف: 2763545

حضرة السيد عبد الله شكرانة - المحترم.

مدير التربية والتعليم - بيت لحم.

تحية وبعد.

الموضوع: تسهيل مهمة.

بالإشارة إلى كتابكم رقم ت ب / 2125/1/3. بتاريخ : 2009/5/13م. ارفع إلى حضرتكم الاستبانة الخاصة بالباحثة ابتسام ميشيل سلسع. مجهزة حسب الأصول.

مع الاحترام.

جهة الاختصاص: التعليم العام.



عاصمة الثقافة العربية
Capital of Arab Culture
al-QUDS
2 0 0 9



(5)

"

"

/

/

.

"

"

.

.

:

-

(×)

-1

-2

+

10-5

-3

-4

----- :

-5

-1

						-1
						-2
						-3
						-4
						-5

-2

						-1
						-2
						-3
						-4
						-5
						-6
						-7
						-8
						-9
						-10
						-11
						-12
						-13
						-14
						-15
						-16
						-17
						-18
						-19

-3

						-1
						-2
						-3
						-4
					(4)	-5
						-6
						-7
						-8
						-9
						-10
						-11
						-12
						-13
						-14
						-15
						-16

-4

						-1
						-2
						-3
						-4
						-5
						-6
						-7
						-8
						-9
						-10
						-11
						-12
						-13
						-14
						-15

-5

						-1
						-2
						-3
						-4
						-5
						-6
						-7
						-8

-6

						-1
						-2
						-3
						-4
						-5
						-6
						-7
						-8
						-9
						-10
						-11
						-12
						-13
						-14
						-15
						-16
						-17
						-18

(6)

		-1
		-2
		-3
		-4
		-5
		-6
		-7
		-8
		-9
		-10
		-11

73		.1
76		.2
80	.()	.3
81		.4
82		.5
83		.6
84		.7
85		.8
86		.9
87		.10
89		.11
92		.12
94		.13
96		.14
98		.15

88		.1
91		.2
93		.3
95		.4
97		.5
99		.6

0	
1	
2	
6	
7	
7	
8	
8	
9	
10	
11	
17	
20	
24	
27	
29	:
34	
38	

42	
50	-
59	
70	
71	
71	
71	
73	
73	
75	
76	
76	
77	
78	
79	
98	
99	
109	
117	
118	
126	
131	
139	
140	
141	