

•

-

.

:

-

-

. :

-

-

-



-

.

:

(20510025) :

. :

:

2008/ / :

.....:
.....:
.....:

. : -1
. : -2
. : -3

-

.

.....:

2010/ / :

:

:

:

:

:

:

:

:

:

2008 2008 وشمل

.(SPSS)

The role of Palestinian NGOs in supporting the organizational capacity of small enterprises in the West Bank

Abstract

This study was conducted in the period January 2008-August 2008, and study group included all administrative board members of organic oil manufacturers association in the West Bank. Study scope could be justified by lack of literature and studies that deal with role of Palestinian non-governmental organizations in supporting organizational capacities of small institutions locally, as well as defining organizational capacities which Palestinian NGOs provide small institutions with.

This study used descriptive method and data were collected, questions were answered, hypotheses were tested by reviewing, analyzing and criticizing previous literature, a study questionnaire was designed and results were reviewed using Statistical Package for the Social Sciences (SPSS).

The most important results the study came up with is that its clear that NGOs took part greatly in supporting organizational capacities of small institutions, and that could be seen through answers of study group and high values of study axes.

Those NGOs supported capacities and skills of employees, improved their capabilities to carry out jobs effectively, reinforced ability to set timetables for objective defining, strengthened financial management capacities so that ability to control financial operations was high, improved ability to measure performance so as to reinforce ability to devise clear plans to follow up performance and reinforced ability to spot problems.

All of which increased the ability to hold responsibility at work and solve problems, moreover, NGOs reinforced small institution ability in time-management and significantly contributed in training personnel in time-management. The marketing side was also strengthened by increasing ability to develop products put on sale. Furthermore, results ended up that most of organic oil associations could be found in Salfeet region, most of study group are males and experience varies from five to ten years. In sum, NGOs do contribute in reinforcing organizational skills of small institutions.

The study also ended up with some suggestions, the most important of which:
Forming a joint work unit among various NGOs that support small projects sector and all organizations concerned.

Characteristic of unit work must be in several aspects such as training small institutions owners about latest related technology, and providing them with up-to-date information.
Training associations staff about communication skills.

Focusing on education as an elemental characteristic for association members as itobviously affects acquisition of skills and capacities which have benefit for small institutions.

Training courses must be held abroad and to be targeted to small project managers in order to prevent waste of resources and to attract specialists and experts.

1.1

2.1

:

•

•

•

•

•

3.1

:

•

•

•

4.1

:

5.1

:

:

.

•

•

•

•

•

:

:

•

•

•

•

•

•

•

:

.

:

$(\alpha \leq 0.05)$

•

$(\alpha \leq 0.05)$

•

$(\alpha \leq 0.05)$

•

$(\alpha \leq 0.05)$

•

$(\alpha \leq 0.05)$

•

$(\alpha \leq 0.05)$

•

$(\alpha \leq 0.05)$

•

7.1

:

:

:

:

:

:



1.2

.

2.2

: .1.2.2

()

)

.(2007

:

.(2005)

:

" "

.(1996)

:

.(2007)

" " "CIVIL"

/

" "

(" ") ()
() ()
(
(1992) " "

.
)
(
.
.
" "
)
(
.
:
(1995).

:
.
.
(2004)
•
•
•
•

: .2.2.2

.(1996)

()

/

.(2003)

:

:

•

•

•

:

•

:

•

•

:

•

•

:

○

:

○

:

○

•

.(1999)

: **.3.2.2**

1994

.1967

.(2002)

: **.4.2.2**

:

:

•

.1967

1948

.(2002)

1994

1967

:

•

.(2002)

. . . 1982

.(1997) .

1987

.(1997) .

.(1996)

" "

:

•

()

)

.(1997

:

.5.2.2

:

:

:

•

○

○

○

○

○

:

•

○

(2004) .

-
-
-
-

.(2004)

: **.6.2.2**

:

: ●

)

.(

: ●

(2001)

●

“ ”

()

•
:

•
:

() ()

) .
:() .(2001 •

) .
:() .(2001) •

:

.7.2.2

:

:

•

:

•

:

○

:

○

(2001) .

:

•

:

•

.(2001)

:

.8.2.2

.(2001)

:

.9.2.2

.(2001)

.10.2.2

:

"

"

•

•

•

(2001)

•

.(2001)

:

.11.2.2

:

•

•

•

•

•

.(2000)

:

.12.2.2

:

46.8

%28.8

2001

% 5.5

1.4%

%10.8
. %1.8

.(2001)

:

.13.2.2

)

(

.(2004)

:

14.2.2

:

1986

.1987

1987

(75)

(55)

50

500

50

99

.(2006)

:

:

•

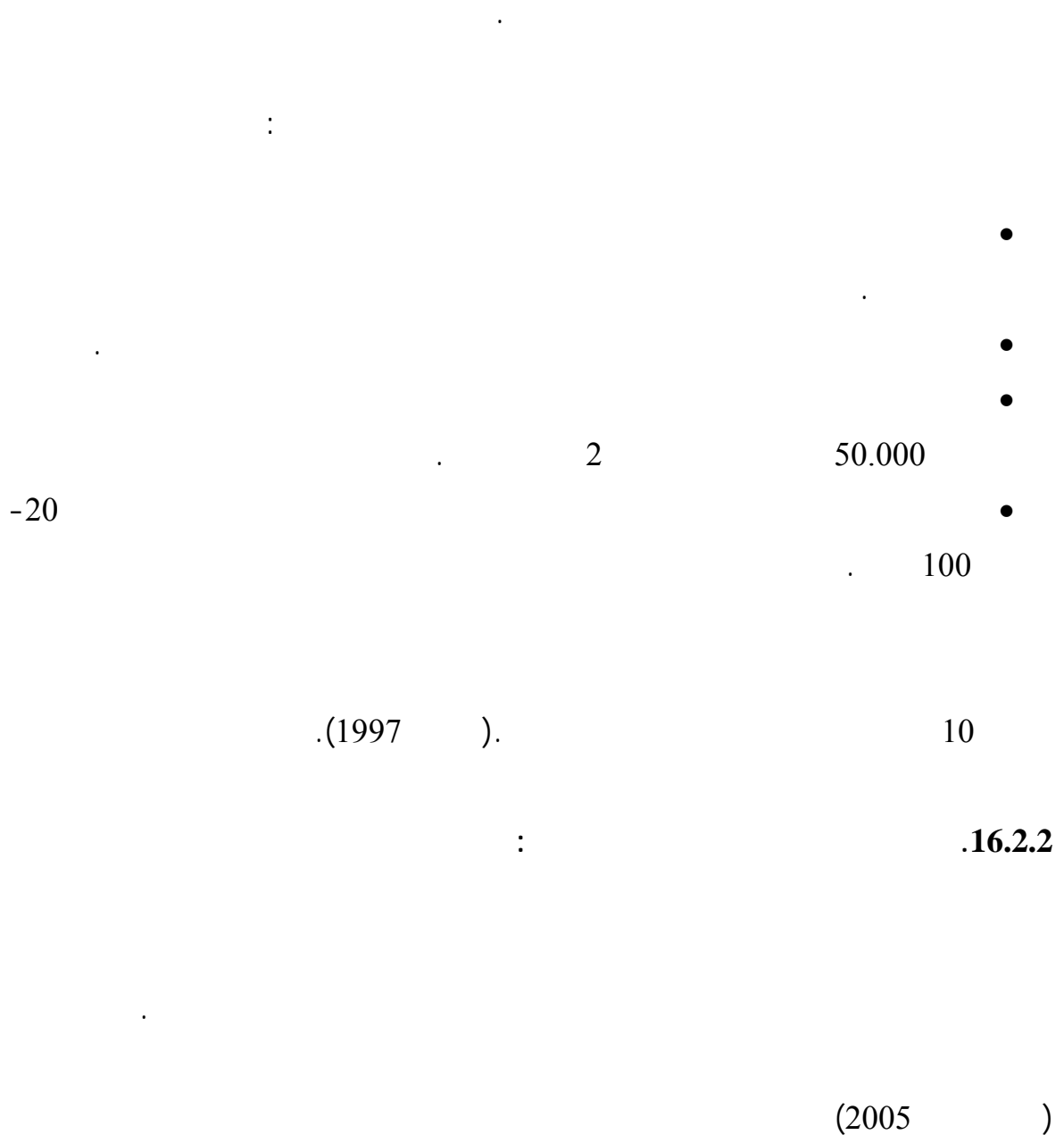
500

(1997) .

100-20

:

•



.(2002)

%52

•

:

.18.2.2

:

:

:

•

○

○

:

•

...

:

•

.(2003).

:

.19.2.2

:

•

•

•

(2007

). .

•

•

•

.(2007)

:

.20.2.2

.(2006) :

:

•

•

"

"

.(2007

)

.(2007

)

:

.23.2.2

1994

2000

()

%25

2002

.(2005

)

10

:

.24.2.2

:

•

•

•

•

•

•

•

•

.(2006)

:

.25.2.2

2004

9/8

."

"

()

2004 8
 5 ()
 15 0.18
 . 8

()
 15000 30 /
 500
 2005/6/6
 20 31 2006
 17 2007
 25000 2200 متر مربع 26
 .(2008)

3.2

:

" : (2006)

•

"

(150)

" : (2005)

•

"

spss

" : (2006)

•

"

" : (2002)

•

"

" : (2001)

•

"

."2005-2000

" :(2007)

spss

.

" : (2006)
)

•

."

spss

.

" : (.)

•

."

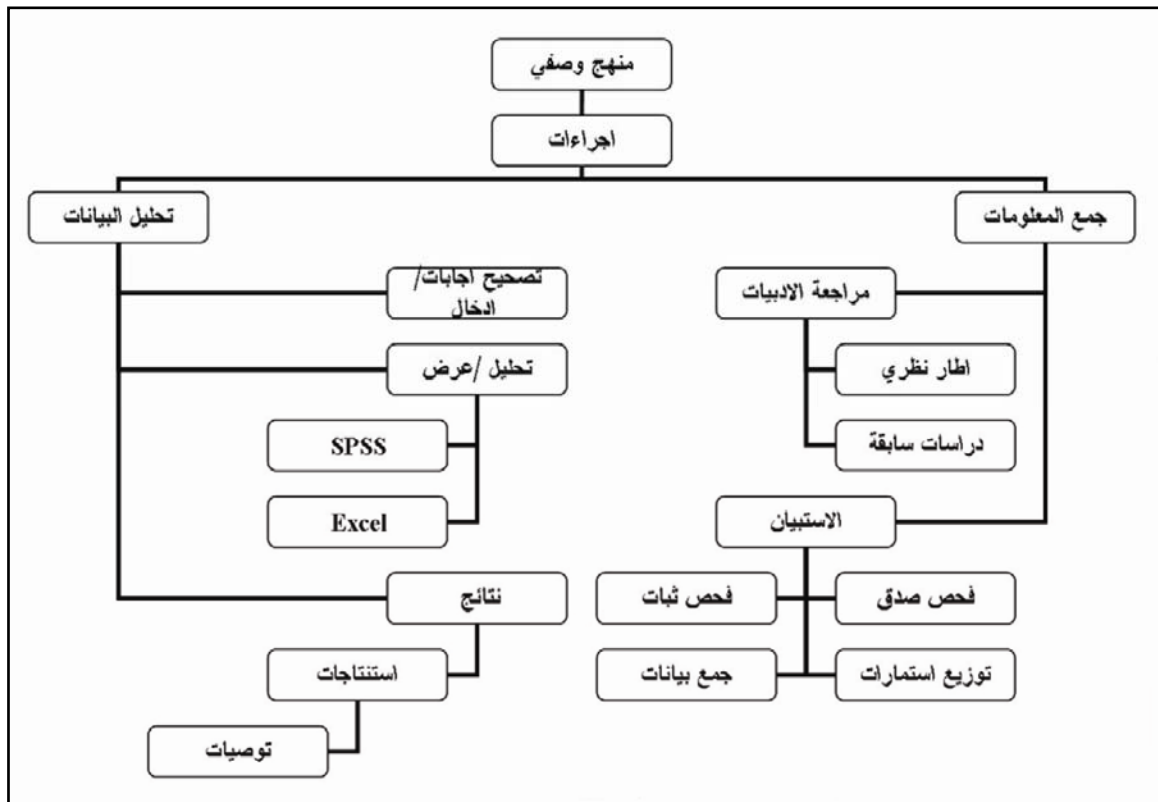
SPSS

(2000)

•

4.2

(1.3) .



1.3:

1.3

2.3

(1.3) /

:

(1.3) /

:1.3

6		1
6		1
5		2
7		3
6		4
7		5
7		6
9		7

3.3

)

(2.3) (1.3

.(2.3)

:2.3

811.0	
890.0	
931.0	
838.0	
900.0	
898.0	
923.0	
964.0	

4.3

(10)

.(3.3)

(Pearson correlation)

:3.3

0.000	0.479	
0.000	0.479	
0.000	0.670	
0.000	0.544	
0.000	0.490	
0.000	0.594	
0.001	0.464	
0.000	0.667	

(0.667)

(3.3)

(0.670 0.464)

(0.000)

.(0.001 0.000)

0.05

5.3

(SPSS)

.(

)

T-test

(ANOVA)

6.3

:

: •
.2008
:
:
:

7.3

62

80

. %77.5

8.3

: ()

: **.1.8.3**

54

.(%12.9) 8

(%87.1)

.4.3 /

:4.3

87.1	54	
12.9	8	
100	62	

:

.2.8.3

(4.3)

50 - 41 (%8.1) 30 (%50) 40 - 31 (%33.9)

45 - 30

45 - 30

.(5.3) /

:5.3.

8.1	5	30
50.0	31	40 31
33.9	21	50 41
8.1	5	50
100	62	

:

.3.8.3

(%35.5)

(%38.7)

.(%28.8)

%64.3

.(6.3) /

:6.3.

38.7	24	
35.5	22	
28.8	16	
--	--	
100	62	

:

.4.8.3

15 - 11

(% 54.8)

10 - 5

(% 24)

5

(% 14.5)

. 15

15

.(7.3) /

5

:.7.3

24.2	15	5
54.8	34	10 -5
14.5	9	15-11
6.5	4	15
100	62	

:

.5.8.3

.(%8.1)

(%30.6)

.(8.3) /

:.8.3

14.5	9	
14.5	9	
19.4	12	
30.6	19	
12.9	8	
8.1	5	
100	62	

:

•

•

•

•



.()

1.4

:

. (1.4)

(4.11)

(4.46-3.91)

:1.4

528.0	4.12	
668.0	4.32	
580.0	4.46	
477.0	3.94	
606.0	4.03	
599.0	4.08	
538.0	3.90	
445.0	4.11	

.1.1.4

:

.(2.4)

:.24

876.0	3.95		B1
700.0	4.03		B2
623.0	4.06		B3
796.0	4.38		B4
656.0	4.20		B5
740.0	4.09		B6
4.12	4.12		

(4.12)

%4.39

.%3.95

.2.1.4

.(3.4)

:3.4

781.0	4.44		C1
733.0	4.23		C2
758.0	4.2		C3
862.0	4.45		C4
867.0	4.25		C5
4.36	4.32		

(4.32)

%4.45

.%4.18

.3.1.4

.(4.4)

:4.4

560.0	4.69		D1
594.0	4.67		D2
764.0	4.14		D3
806.0	4.14		D4
757.0	4.12		D5
662.0	4.70		D6
651.0	4.74		D7
580.0	4.46		

(4.46)

%4.74

.%4.13

)

(

.4.1.4

.(5.4)

:5.4

785.0	4.19		E1
575.0	3.88		E2
614.0	3.82		E3
603.0	3.88		E4
608.0	3.91		E5
638.0	3.95		E6
477.0	3.94		

(3.94)

%4.19

.%3.82

.5.1.4

.(6.4)

:6.4

723.0	3.96		F1
731.0	3.91		F2
740.0	4.09		F3
930.0	4.04		F4
721.0	4.06		F5
564.0	4.09		F6
--	--		F7
606.0	4.03		

(4.03)

%4.10

.%3.92

.6.1.4

.(7.4)

:7.4.

649.0	3.93		G1
663.0	3.95	.	G2
767.0	4.03		G3
668.0	4.43		G4
838.0	4.04		G5
839.0	4.01		G6
872.0	4.16		G7
599.0	4.08		

(4.08)

%4.44

%3.94

.7.1.4

.(8.4)

:8.4

677.0	4.00		H1
757.0	3.87		H2
639.0	3.98		H3
743.0	3.85		H4
703.0	3.88		H5
748.0	3.88		H6
645.0	3.90		H7
711.0	3.77		H8
495.0	3.98		H9
538.0	3.90		

(3.91)

.%3.77

%4.00

: 2.4

($\alpha \leq 0.05$)

:9.4

	F/T	
051.0	652.0	
052.0	2.733	
493.0	716.0	
092.0	2.249	
004.0	3.969	()

($\alpha \leq 0.5$)

0.05

()

0.05

4.30 4.30

3.79 3.68

: .1.2.4

($\alpha \leq 0.05$)

:10.4

	F / T	
530.0	721.0	
000.0	7.430	
506.0	689.0	
001.0	6.655	
058.0	2.284	()

()

($\alpha=0.5$)

0.05

0.05

30

50 - 41

40 - 31

50

4.18

4.19

4.33

3.20

0.05

10 - 5

4.01 4.12 4.27

5

15-11

.

3.21

15

:

.2.2.4

($\alpha \leq 0.05$)

:11.4

	F / T	
014.0	1.242	
453.0	888.0	
515.0	671.0	
252.0	1.400	
001.0	4.764	()

($\alpha=0.5$)

0.05

0.05

4.36

4.05

0.05 ()

4.56 4.62

3.75 3.62

: .3.2.4

($\alpha \leq 0.05$)

:124.

	F / T	
875.0	168.0	
007.0	4.458	
720.0	330.0	
007.0	4.457	
003.0	4.030	()

($\alpha \leq 0.05$)

0.05

0.05

50- 41

40 -31

50

4.50 4.56

3.92

0.05

0.05

: .6.2.4

($\alpha \leq 0.05$)

:15.4.

	F / T	
047.0	596.0	
011.0	4.071	
183.0	1.750	
033.0	3.126	
001.0	5.214	()

(05 $\alpha \leq 0.$)

0.05

0.05

4.10

3.96

0.05

4.28

40 -31

3.91

30

0.05

4.28

10⁻⁵

3.7905

5

()

0.05

3.28

4.39

:

.7.2.4

($\alpha \leq 0.05$)

:16.4

	F / T	
192.0	2.040	
055.0	2.609	
038.0	3.450	
974.0	073.0	
118.0	1.849	()

()

0.05

($\alpha \leq 0.05$)

0.05

4.12

3.68

3.4

:

%4.39

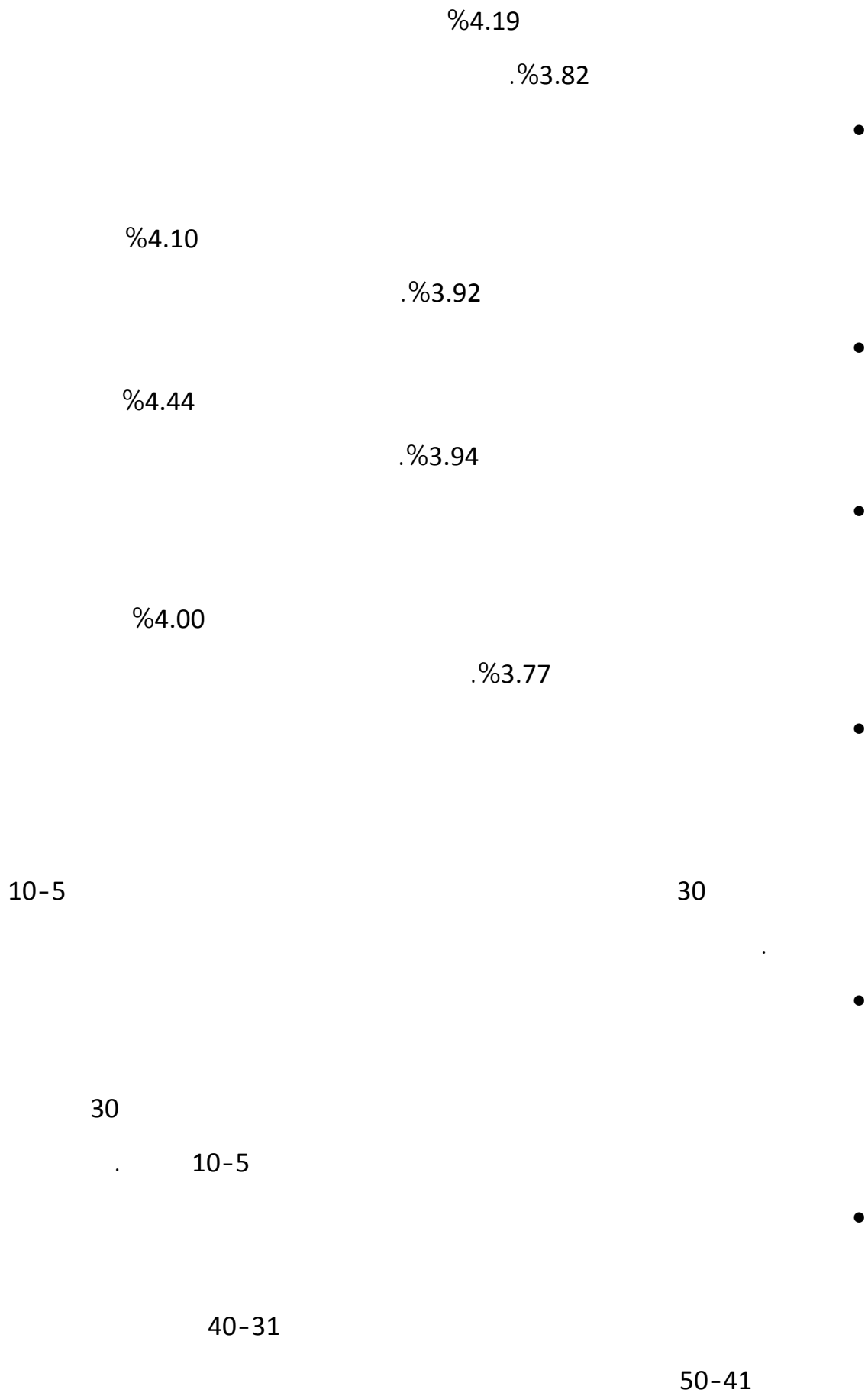
%.3.95

%.4.18

%4.45

%.4.13

%4.74



15

•

50

40-31

•

•

40- 31

10-5

•



1.5

:

•

•

•

•

•

•

•

•

•

•

2.5

:

•

:

○

○

○

○

○

●

●

●

●

●

●

●

()

●

●

- (1995) •
- :(2006) •
- 2006 15-13
- 145-125
- (2006) معلومات عامة حول الاغاثة الزراعية، رام الله، فلسطين •
- <http://www.pal-arc.org/arabic/about/general.html> 20.07.2008
- :(2006) •
- 2006 15-13
- 96-75
- 1,2 " .:(2000). •
- 89-84
- :(1996). •
- (1992). •
- 70-69
- :(2007) •
- 2005-2000
- :(2006) •
- 2006 15-13
- .1 .:(2005). •
- :(2006) •
- " .:(1999). •
- 21-6 .24

• (2003).

• (2006)

()

• 1. (2003).

• (2000).

-19

2000 30

<http://www.boell-meo.org/ar/web/219.html> 29/1/2008

• (2005)

• <http://www.ahewar.org/debat/files/40243.doc> 29/1/2008

• (2004)..

• (1997).

76-89- 3٠4 "

• (2001)

• (2008)

• 25.1.2008 <http://www.bahrainchamber.org.bh/ar/Content.aspx?pid=60>

• (2006)

• <http://www.ngoce.org/content/ngorg.doc> 28/1/2008

• مركز العلوم الوطني الفلسطيني (2007) قطاع المؤسسات الصغيرة في الاراضي الفلسطينية

• <http://www.pnic.gov.ps>

• (2002)

• (1997)

- (2001)
- (2001)
- (2006)
- 2006 15-13 797-775
- (2005)
- 25-9 .9
- (2004)
- 1
- (2003)

:1.3



:

:

:

:

.()

— —

—

.

:

. :

:

:

	(2)	(1)	<input type="checkbox"/>	1
40-31	(2)	30	(1) <input type="checkbox"/>	2
50	(4)	50-41	(3)	
	(2)	(1)	<input type="checkbox"/>	3
	(4)	(3)		
10-5	(2)	5	(1) <input type="checkbox"/>	4
15	(4)	15-11	(3)	
	(2)	(1)	<input type="checkbox"/>	5
.....:				6

:

(x)

:

					:
					:
					-1
					-2
					-3
					-4
					-5
					-6
					:
					-7
					-8
					-9

						-10
						-11
:						
						-12
						-13
						-14
						-15
						-16
						-17
						-18
:						
						-19
						-20
						-21
						-22
						-23
						-24
:						
						-25
						-26
						-27
						-28
						-29
						-30
					/	-31
:						
						-32
						-33
						-34
						-35

					-36
					-37
					-38
:					
					-39
					-40
					-41
					-42
					-43
					-44
					-45
					-46
					-47

: :2.3

- •
- •
- •
- •
- •
- •

: :3.3

:

2004

9/8

()

)

(

2004

8

()

0.18

5

8

15

.

()

15000

30

/

500

2005/6/6

.

20

31

2006

26

17

2007

2006

(145000) 2007

(155000)

25000 2 2200

).

.(2008

:

-2003

:

2004

16

1320

2005

3

2008

400

. 19

:

-
-
-
-

:

1224

2003\8\20

	25	9		16
			2004	
Extra			65	
				.Vergin
8			15	
2006 2005				.2008 2007
	2007	60	2005	45
	. 25	()		50 ()
2005				
			.Olive Oil Organic	
2000				
80				22
		550		UNDP

(1

. 1976
. 84
. /
. 2004

:

.	/	•
.	/	•
.	/	•
.	/	•
.	/	•

84 1976

()

(50)

()

" 14000 "

" 30000 "

" 25000 "

" 5 "

1100

22

:

30 – 25

3/1

:

.ACDI / VOCA

•

.BABA

•

.

•

.

•

:

•

•

•

/

(2

. 2005

. 52

. 45

2007/5

:

- . / •
- . / •
- . / •
- . / •
- . / •

2005

.()

()

6 2005

45 2005 Extra 15

12000

.2006 Extra

:

5 6)
(

- / •
- . / •

:

1200

:

45000

30000

(3

. 1983

. 15

. 165

. 150

. 17

/

.04-2462416:

0599-241784:

/

-
-
-
-
-
-

15
 13
 10
 14
 27
 200
 1983
 210
 1000

:

:

•
•

•
•
•
•

:
Acidi /

2007/8/13
Voca

(4

. 2005/2/28
. 32
. / 20

:

. / •
. / •
. / •
. / •
. / •

:

. •
. •
. •

2500

2000 - 1500

%70-60

4000

2007/8/7 :

3

18
(

Extra Virgen
)

18

16

Virgen

()

\$ 4000

:

. 5 2

. 500

-
-
-
-

ACDI COVA

:

()

-

•
•

(5

5000

20

2007

20-18

:

2005

:

:

/

•

.

/

•

•

.

:

(

)

:

.

•

.

•

.

•

.

•

.

•

acid / voca

(6

9500

24000

4000

500

2004

25

organic

4000-2006

2007-5 /

.2007-5

.

-
-
-
-
-

:

25

2004

()

2006 (PAPA)

ACDI VOCA

.

:

-
-
-
-
-

(7

:

650

%90

20.000

:

. 2005

2003

-
-
-
-
-
-

17

75

8

.2006

/

- 316607

/ 09 - 2900411

:

/

0599

:

2003

5

60

:

Acidi / Voca

(8

. 2007/6/6

.1376

. 27

. 25 - 20

. 2007

:

. /

•

. /

•

. /

•

. /

•

. / •
. / •
. / •

:

27 2007/6/6

4500

()

5 17 2006

EXTRA

25

ACDI /

.207

VOCA

/

(9)

. 2003/8/20

57

60 – 55

.2006/9/23

:

. / / •
. / / •
. / / •
. / / •
. / / •

:

)

2003

(

:

1	2	5	6	•
			4000 – 3500	•
				•
			–	•
	150000	650	KFW	•
		20		•

:

.

•

:

.

•

.

•

/

(10

. 2005

. 52

. 45

2007/5

:

.

/

•

.

/

•

.

/

•

.

/

•

.

/

•

2005

.(

)

(

)

6

2005
12000

.2006 Extra 45 2005 Extra 15

:

•

5

6

)

(

/

•

.

•

:

1200

:

45000

30000

76	1.3
80	2.3
81	3.3

41

1.3

42	1.3
43	2.3
44	3.3
46	4.3
46	5.3
47	6.3
48	7.3
48	8.3
51		1.4
	
51		2.4
	
51		3.4
	
53		4.4
	
54		5.4
	
55		6.4
	
57		7.4
	
58		8.4
	
59	9.4
60	10.4

61	11.4
62	12.4
63	13.4
64	14.4
65	15.4
66	16.4

	
	
	
4	
	
1	:
1	1.1
2	2.1
2	3.1
3	4.1
3	5.1
4	6.1
6	7.1
7	:
7	1.2
7	2.2
7	1.2.2
10	2.2.2
12	3.2.2
12	4.2.2

14	5.2.2
15	6.2.2
16	7.2.2
18	8.2.2
18	9.2.2
19	10.2.2
19	11.2.2
20	12.2.2
21	13.2.2
22	14.2.2
24	15.2.2
25	16.2.2
27	17.2.2
27	18.2.2
25	19.2.2
28	20.2.2
29	21.2.2
30	22.2.2
31	23.2.2
32	24.2.2
32	25.2.2
33	3.2
39	4.2
41	:
42	1.3
42	2.3

43	3.3
43	4.3
44	5.3
44	6.3
45	7.3
45	8.3
49	9.3
50	:
50	1.4
51	1.1.4
52	2.1.4
53	3.1.4
54	4.1.4
55	5.1.4
56	6.1.4
57	7.1.4
59	2.4
60	1.2.4
61	2.2.4
62	3.2.4
63	4.2.4

64	5.2.4
65	6.2.4
66	7.2.4
67	3.4
70 :	
70	1.5
71	2.5
73	
100	
101	
102	
104	