

1967-1948

" "

-

2011 / 1432

1967-1948

" "

-

2011 / 1432

1967-1948

∴
" "

- -

. ∴

- -

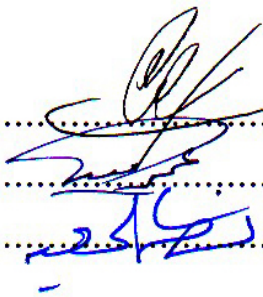
2011 / 1432

1967-1948

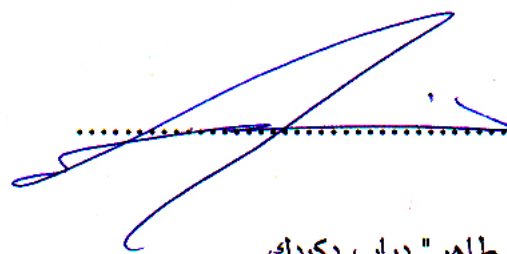
" " :
20714408 :

2011/ /

.....:التوقيع .. : .1
.....:التوقيع : .2
.....:التوقيع : .3



-
2011 / 1432

التوقيع: 

نور " محمد طاهر " دياب دكيدك

التاريخ: 2011 / 5 / 11

"

"

.

.

.

.

.

.

.

.

.

.

.

.

"

"

1967 1948

1964

1955

1957

Abstract

This study intended to examine the educational status in the City of Jerusalem within its municipal borders between 1948-1967, taking into consideration that Jerusalem was the center of a governorate, thus when comparing it with other governorates the issues are put within the general educational context in the Kingdom during that era. The study aimed to draw the framework within which the Jordanian education policies were examined. As well it aims to reveal the extent of investment in the educational infrastructure; at the same time, it measured the quantitative development that coincided with this investment. Both human resources investment and models system theories served as a guide in the process.

The historical analytical model was used as it suits the purposes of the study. Original archived documents from the archives of the Jerusalem governorate and the archives of some of the private schools, in addition to the utilization of some of the formal Jordanian governmental archives were all consulted together with undertaking interviews with education specialists of the era under study and other people engaged in the education profession.

The study found that the Jordanian educational policies; although they were affected by the political mandate in the beginning, evolved independently of these policies as time elapsed. This was evident in both the Al Maaref Law of 1955 and the Education Law of 1964. Both these laws dealt with structural and content issues in the educational system and laid down what could be considered as Jordan's independent educational policy.

These laws were significant in empowering the Ministry of Education in dealing with the increased numbers of students and the needs for new

schools and formal training of teachers. Investment in new school buildings went hand in hand with insistence on quality teaching and its enhancement. The educational scene in Jerusalem also saw several attempts at creating higher education institutions such as a university.

Finally the study found that the Ministry of Education had special interest in following up the private schools, particularly those that were established in order to help the children of those injured in 1948 and those orphaned as a result of that war. UNRWA, the United Nations Works Agency for Palestinian Refugees, established in 1950 also set up schools to cater to thousands of refugee children. However, the formal educational system run by the Ministry of Education absorbed the biggest bulk of students among the governmental, the private and the UNRWA schools. UNRWA focused on the education in the primary and lower stages; the private schools focused on absorbing the students in from the lower stage up to the secondary stage. While most government schools, especially in cities and towns, offered students education in all stages while those in the rural areas stressed more the lower and primary stage.

: - 1

- . 1.1
- . 1.2
- . 1.3
- . 1.4
- . 1.5

1967 1948

)

(

1.2

" "

وجود

1948

.1948

1.3

1948 1917

1.4

":

.(1996

) "

: (2000)

Human "

"

"

"Capital Theory

.(2003) "T.Schultz"

1948

Ludwig von "

"System Theory"

" :

"Bertalanffy

- -

."

"

)

.(2005

"General Systems Theory"

:

.(2000 Weckowicz)

:

(2001)

1.5

:

.1

.2

.3

:

:

: (1961)

1958

:

1948

: (1965)

.1965

1965

:

1965

: (1975)

: (1979)

()

.1985-1948

: (1985)

: (2004)

1967 1948

: (2005)

.1967

: (1989)

1956

: (1998)

1997 - 1910

1959

: (2004)

()

: (2005)

: .2003 1921

: 1946

2003

1946

1950

.1964

1955

)

1946

(

.1967 1948

1964 1946

·
:
) : (1978)
(1999) : : (1999)
:
1967 – 1831 : (2010)

2 الفصل الثاني : - :

2.1

2.2

: 2.1

1917 / 11

1

:

1920-1917

³"Tadman"

².

1918 -

⁴"Humphrey Bowman"

-1920

:⁵1947

(1947)

"

:

:

"

1990 . - :(1990). ¹

.993

1990 . - :(1990). ²

.37

.997 . - :(1990). ³

⁴Tibawi, A.L.(1956): Arab Education In Mandatory Palestine, 1st edition. Luzac & Company LTD, London. p25-26.

:(1986 / 1406). ⁵

.448-447

6

-

:

7

.

:

8

9

:

(

)

10

:

11

-

.98

1948-1918

:(. .) . . 6

.98

7

.37

:(1990).

8

.447

0

:(1986).

9

.445-444

10

.1948-1917

:(2004).

11

.32 1994

: .152

12

:

:

:

13

1928

16

14

1933

15

1933

¹² Tibawi, A.L.(1956): p93-95.

¹³ Tibawi, A.L.(1956). p78.

.153

:(2004)

14

.1125

:(1990).

15

(The Special Committee)

17

1942

()

1944

18

19

1932

4

8 :

14

1938/1937

20

41

43

58

21 1943/1942

: 22 1945



:(.). 16

.34

.85 1

: .154

:(2004) . 17

.1942 19 1169

-

: .153

:(2004) . 18

.34

:(.). 19

.108

:(.). . 20

.38

-

:(2006). 21

.444

0

:(1986). 22

7²³

5

6

11

.²⁴

40

4311

38

1945

. 3553

7

280

1101

.(1-2)

جدول 1-2:

.1945

57	68	1861	1900	11	
14	46	280	1101	7	
269	193	3553	4311	38	
340	614	5694	7312	56	

(1985). :

.446 .1945 31

.55-54

:(1990) ²³

.445-444

.444

:(1986). ²⁴

10

27 :

6

5

19

1922

(²⁶)

1923

²⁷

1919 1918

²⁸

²⁹

()

		.97	:(.). .	25
	:	.159	:(2004) .	26
			.52 1994	
.1934	24	:	.159	27
.44-42	.	-	:(1990).	28
.1126	.	-	:(1990).	29

30()

31

231 1934 1928

32

92

33

1946 1919

34

1923

940

1947

30

:(200).

31

.62

<http://www.kabuljebain.com/TheBookOfMyLifeStroy.htm>.2010-11-1

:(2007)

32

.296-217 105-85

.83-71

33

.44-43

:(1990)

34

1948

16

81

1946

.³⁵

25

.106

.187 1950 1948-1920

:(2004).

³⁵

:

:

36

37

38

" :

39"

" : 1936

40"

: .75 (2004). 36
 .102
 .41-40 (1990). 37
³⁸ Tibawi, A.L.(1956). p26.
 .Ylana , From Village to Nation , p. 121 – 122: .160 (2004). 39
 : (2005). 40
 : .48
 .55-52 1986 78

1928/1927

.41

.42

.43

.44

.45

.46

1943/1942

20 -

.221				:(2007).	41
	.38		-	:(1990).	42
	.448			:(1986).	43
Palestine, Chief Secretary, :	.1130		-	:(1990).	44
				A Survey..., Vol II, p 650.	
.244	-	1948		.(2001)	45
	.1126		-	:(1990).	46

:

.

.

.

.

:

.

.

.

.

3. الفصل الثالث : السياسة التعليمية الأردنية.

3.1

3.2

3.3

3.4

3.5

1948

50

) :

51

52 (

-) :

53 (

1950

54 "

..."

55

:(.). 50

.376-375

51

:(1998). 52

1950-1947

:(2004). 53

.137

1949-1916

:(1993). 54

.376

:(1960). 55

.307

56

-

de "

-

."jure

57

.1948

20

... " :

58u
... ..

59

60

.706

1952-1947

.310

56

:(.).

57

.315

:(1960).

58

59

8-4

-

2009

.2009 /

.134

1952-1947

:(.).

60

.⁶² 1962 1961 1954 1951 : ⁶¹1957

63

1957 1951

1963

13

⁶⁴ 1950-8-1

1948-11-22

.⁶⁵ 1951

1959-9-1

.⁶⁶

.⁶⁷

1989-1921

:(2008).

61

.398

62

:

:

. 1954

22

1951

:

. 1956

26

1954

. 1962

26

1961

22

27

:

. 1963

21

1962

.684-560

:(1988).

.213 1995

: 1957-1953

63

Benvenuti, Ibid, 42.

17

1993 .

64

65

.4 2004

PASSIA

66

.61

.1996-1850

67

⁷⁰ 1955

⁶⁹ 1954

⁶⁸ 1953

⁷¹ 1956 1

1956

⁷² 1958

1964

⁷³

⁷⁴ 1957

⁷⁵

⁷⁶

1950

14

⁷⁷

1959

1962

⁷⁸

⁶⁸

.268 2005

.96

1957-1950

:(1995) . ⁶⁹

.141-126

:(1995) . ⁷⁰

.96

:(1995) . ⁷¹

.131

:(.) . ⁷²

.40

1974-1964

:(1991). ⁷³

:(1988) . ⁷⁴

.35

.96 .

:(.) . ⁷⁴

.214

:1957-1953

:(1995) . ⁷⁵

.12 1963/1962

⁷⁶

.17

⁷⁷

.12

⁷⁸

79
 .
 80

1952

81
 .

: 1948

82() :

1948

: .

83
 .

1948

84
 .

	.36	:(1988)	79
	.302	:(2008)	80
	.300		81
.1948	-	:(2004)	82
	.26		83
	.340		84

:

3.2

⁸⁵

⁸⁶ 1952

1950

(1954)

15

):

20

1948

20

⁸⁷(1954

16

1949

(1955)

⁸⁸

⁸⁹

. (2011) ⁸⁵
 1989-1921 . (1989). ⁸⁶
 .237 ⁸⁷
 3 1954 6 ⁸⁸
 .1954 16 (1171) ⁸⁹
 1329 23 1331 5 .1 : ⁸⁵
 .1932 .2 .1929/1/9 ⁸⁶
 1 .5 .(1937 (21) .4 . 1933 .3
 .1939 2 .6 .1939 ⁸⁷
 .237 .(1989). ⁸⁸

91

90

.92

93

1960

94

95

96

97

1964

98

99

12

1955 20

90

.4 346 16-04-1955

10 1955 20

91

1960 22

92

93

.1 544

27 1955 20

94

40 1955 20

95

.237 .(1989).

96

97

.(1963/1962)

1961 18

:(1963) .

98

7

253 .(1989).

99

.48 (1967/1966)

16

1964

1955

101

100

102

:

103

()

:

(...

)

(

)

104

(

)

105

106

1964 16

3 100

http://www.lob.gov.jo/ui/laws/search_no.jsp?no=16&year=1964 720

26-05-1964

.2010-10-27

.11 1964 16

101

.13 1964 16

102

.17 1964 16

103

104

.22-21 1964 16

105

.37 1964 16

106

3.3

1948

1948

107

108

109

110

111

.6 1955 20

.6 1964 16

.48 .1955-1954

1922

.(1963/1962)

.1958

3

.(1963/1962)

:

:

-

112

-

. 113

. 114

. 115

. 116

.34	1955	20	112
.33	1955	20	113
.66	1964	16	114
.36	1955	20	115
.68	1964	16	116



- -

1949

8

302

117

:

118

:

:

:

119

:

1958-1948

:(1990).

117

.88

118

<http://typo38.unesco.org/ar/unesco->

.2011-2-15

[home/organization/about-unesco-srtct.html](http://typo38.unesco.org/ar/unesco-home/organization/about-unesco-srtct.html)

.89

:(1990).

119

1959 : 120
121 (John Davies)
: 1967

122

.90 .(1990). 120
121
1959
:
Schiff.B :(1995). Refugees unto the third generation: UN aid to Palestinians, New York.
.95 .(1990). 122

:

3.4

123

124

125

126

39.25

31

127

.(1-2)

.¹²⁸1954-1953

123

.259

.(1989). . :

.238

.(1989). .

124

.85

1964

16

125

4

1956/1955

126

18

1956/1955

:

(1448)

.47

16-7

.47

16-7

18

1956/1955

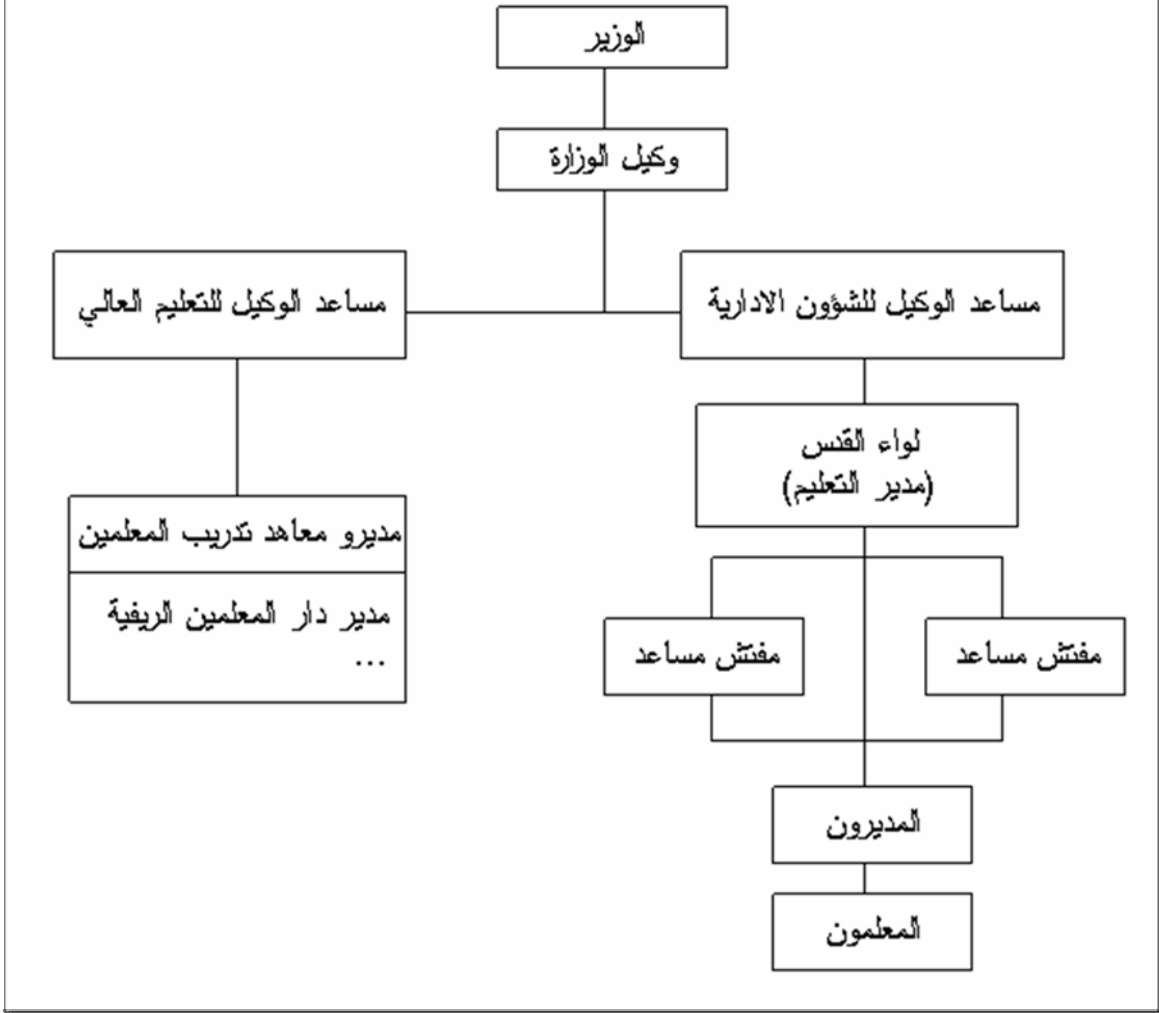
127

.20

(1954/1953)

128

التنظيم الإداري في لواء القدس التعليمي



:1-3

(1989)

:

).

.(3

129 1948

130

131

.90 .(2011)
.(2011)

129
:(2006).() . 130
131

:

3.5

-

-

1671

114

132

.1963

1963

-

-

1948

1955

.40

.1955 20

132

:

1948

1955

1957

:

1955

1964

4. الفصل الرابع: تطبيق قانون التربية والتعليم الأردني في مدينة القدس.

4.1

4.2

4.2.1

4.2.2

4.2.3

4.2.4

4.2.5

1948

133

1948

11 1946/1945

6

135

134

136

45 1947

137

:

8

139

138

:(2010) .

133

134

:(1995) . :

.46-39 1995

1994 ()

12-9

" "

135

136

137

). :

:

-

:(2009

.8

1967-1948

:(2010)

: . 1967

138

139

141

140()

8

5

13

142

143

144

140

141

1958-0-18 : (44) 57/1/10/ .()
 : (2010) .

142

: .1950 3-26 3-30

143

.4 1950-3-13 4568

144

1955

1964

" :
146" 60

41

%2.4 1954/1953

:

1963/1962

40

%52.4

%25.8

49-40

%17

59-50

1-4

.¹⁴⁷ %4.8

60

.(1963/1962)

146

147

:1-0

60	50-59	40-49	40		
%4.8	%17	%25.8	%52.4		
%2.4	%8.1	%9.4	%3.9		
%2.4	%8.9	%16.4	%48.5		

.(1963/1962)

:

%70.4 40
 %22 49-40
 %6.8 59-50
 .¹⁴⁸ %0.8 60

2-4

:2-0

60	50-59	40-49	40		
%0.8	%6.8	%22	%70.4		
%0.8	%2.3	%12.1	%12.1		
-	%4.5	%9.9	%58.3		

.(1963/1962)

:

: -

4.2.1

1952/1951

4-4

.1954/1953 1953/1952

1953/1952 1952/1951

20

15

19

1953/1952

4

1954/1953

17

19

:

9

14

15

1957

151

:

.(1954/1953)

151

:4-0

16	5	11	-	-	-	-	1952/1951
4	3	1	-	-	-	-	1953/1952
4	2	2	14	6	76	2 11	1954/1953
12	8	4	121		88		1963/1962

1954/1953

:
.1963/1962

8 (1958)
1959/1958 130
1963/1962
79 209
15

1957

33

99

:

8 1958 1 : .1
150
31 1958
.152 .1988
.2
:153 (6)
1960 15 : .i
8635
161.410
.154 1960
1961 12 : .ii
3343
62.780
.155 1960
1961 4 : .iii
842

:() : 152
.62/11 57/09 17/4 : 153
: (4000) (14000)
:() :
.65/10 62/02 26/3/4 : 154
:() :
17/4 .62/11 57/09 : 155
:() :
.62/11 57/09 17 /4

15.810

.¹⁵⁶1960

:

.3

1966

20

.¹⁵⁷

1966

158

(1) .¹⁵⁹1965

:()

:

¹⁵⁶

.62/11

57/09

17/4

)

()

:

¹⁵⁷

:(

.67/05 65/03

56/4

1966-7-16

1964

1966-5-19

1966

1967-9-1

1966-8-15

8*6

22

55

1200-1000

:()

:

¹⁵⁸

451-450/17/4

1962

4

.62/11

57/09

17/4

(170)

1965

¹⁵⁹

:(2010)

:

(12)

(433) 1967/1966

:

:

:()

160

163

162

161

164

(2).¹⁶⁵

1959

.() : 160
 -7507/17/4 1961 19
 .62/11 57/09 17/4 (148) 7508
) . : . 161
 (325) 1967/1966 : (2010
 : (11)
 3/14 (.) .()
 .67/03 162
 : (2008) : .
 (9) (410) 1967/1966 .
 :
 .67/03 3/14 .(.) .()
 : (12) (571) 1967/1966 163
 3/14 .(.) .()
 .67/03 164
 (20) (616) 1967/1966
) : : .
 .67/03 3/14 .(.) .()
 60/59 : 165
 1958 4 : ()
 .59/03 58/11 4/4 (1) 37913/62/14

1955

6

8

:

:

:

7

5-4

:5-0

6	99	1954/1953
¹⁶⁶ 12	209	1963/1962
46	195	¹⁶⁷ 1958
14	222	1967/1966

1954/1953

:

.1967/1966 1963/1962

166

.53

:(1961)

167

-7

-

1958

14

1957

1958

(1958)

.

:

.

:

11

168

.(8

) .¹⁶⁹

1963/1962

¹⁷⁰1963/1962

1953/1952

.

1922

171

1948

:

168

18

:

.7

7

1961

169

:

7

1961

18

170

.(1963/1962)

171

3/1/2/35

)

:

.31/22/3

.1963/10-1962/08

(952/6) 21

.(

:6-0

587	14	1954/1953
503	14	1955/1954
449	14	1956/1955
381	16	1957/1956
300	15	1958/1957
241	15	1959/1958
175	16	1960/1959
165	17	1961/1960
165	17	1962/1961

(1963/1962)

:

1958

.1963

(1950) (17) (43) (1963) 172

" (80) " (5)

(8.6) (2.5)

) :

.1963/10-1962/08 21 .(

: . : 173

(1963/1962)

: 4.2.2

1951

530

(

783 725) 1952

1953

-(1958)

-

1748

1967/1966

492 1963/1962

. 1944

(1958)

7-4

.¹⁷⁸

528

1967

1950

1963/1962

90

14 :

187

129

22

43 ()

.54

:(1961)

¹⁷⁸

:7-0

725	1952/1951
783	1953/1952
530	1954/1953
1748	1959/1958
492	1963/1962
1944	1967/1966

1954/1953

.1967/1966

1963/1962

1967/1966

119

19 :

667

325

248

256 ()

90

175

180

45

8-4

.(1963/1962)

.77 (1967/1966)

1963/1962

1967/1966

90

%29

1967/1966

1963/1962

%.1

%16

1955

1963/1962

:8-0

.1967/1966

1967/1966	1963/1962	
19	14	
119	90	
325	129	
667	187	
256	43	
248	22	
175	6	
90	-	
45	1	
1944	492	

1963/1962

:

.1967/1966

1954/1953

8359

181

182

1963/1962

183

()

181

:

.7

:(200).

:

.(1954/1953)

182

.(1963/1962)

183

: 4.2.3

.¹⁸⁴ 12-6

.¹⁸⁵

186

. 9-4

1963/1962 1954/1953

%180

%146 1967/1966

. 18307

.(1963/1962)

184

.188

.(1989)

185

20

25

/

186

21

02-01-1960

1955

:9-0

21650	2778	-	18872	5649	16001	1954/1953
21192	-	-	-	18104	36588	¹⁸⁷ 1958
38979	3999	6160	28820	13477	25502	1963/1962
57286	5089	10077	42120	23628	33658	1967/1966

(1954/1953)

.(1967/1966)

(1963/1962)

-
¹⁸⁸ -60488
 %1.2
 1961

1954/1953
 -1963/1962
 10-4

(14368) 187
 .53 .(1958) : . (4496)
 1961 18 188
7

:10-0

59	11	48	-	1952/1951
76	18	58	-	1953/1952
135	36	99	-	1954/1953
743	143	600	970	1963/1962

(1954/1953)

.(1963/1962)

31

%80

189

25

11-4

12-4

:11-0

282	64	218	1952/1951
442	68	374	1953/1952
1405	492	913	1954/1953

.28 (1954/1953)

.43 (1954/1953)

189

:12-0

919	52	867	1952/1951
1014	67	947	1953/1952
1669	584	1085	1954/1953

.28 (1954/1953)

:

1954/1953

190

11

191

5

192

193

1955

6¹⁹⁰

191

192

193

: 4.2.4

13-4

1963/1962

.1966/1965

331

1967/1966

58

97

176 :

194

%59

14-3

1963/1962

%12

1967/1966

46

195

:

5

45

196

.46 (1963/1962)

:(2009) .

194

195

196

:13-0

1967/1966	1963/1962	
-	743	
4343	93	
1763	166	
58	180	

(1963/1962)

:(1967/1966)

1948

197

1958

198

.3471/10/10/11 1959-2-14 197
: .2210/4 1959-2-23
44/1 :() :
.61/05 58/01 198
:
:
:(989/5) 42/1/33/ / 1958-12-29

:

199

200

100

201

1954/1953

202

203

.1958-12-25		199
	.1958-12-29	200
	:(2008)	1979
	:(989/4) 5/72/ /	1966-9-7
1961	. 1960	1959-1958
58/4	60/11 58/11	(4/13) 5/3/4
		:(.66/11 57/08
		:(1962)
		(3/52)
		203

1958/1957

206

205

204

208

207

:14-0

209		
8	31	²¹⁰ 1955/1954
9	43	1956/1955
13	38	1957/1956
18	35	²¹¹ 1958/1957
16	36	1959/1958
10	41	1960/1959
10	44	1961/1960
-	97	1962/1961

204

205

206

207

208

: (4/13) 5/3/4 : () :1960
 :1963 (16) .60/11 58/11

.66/11 57/08 (3/52) 58/4 : ()
 .57-56 (1962)

.50

209

210

211

-	116	²¹² 1965/1964
---	-----	--------------------------

:(1962) . :

.57-56

1955/1954

14-4

1961/1960

1962/1961

21

1957

1967

1964

-

-

4.2.5 :

213

تشكل

" " :

إلا ،

أن هذا الافتراض يحتاج إلى بحث و

214

) () " "

1959

(Palestinian Entity

1964

215()

" "

216

.31

:(2000). 213

.211 . (1989). 214

²¹⁵ Abu Odeh,A.(1999): Jordanians, Palestinians, and the Hashemite Kingdom in the Middle East Peace Process, 1st Edition, United States Institute of Peace, p100.

²¹⁶ Be'eri,E.(1978): The Palestinians Under Jordanian Rule: Three Issues, Magnes Press and Hebrew University, Jerusalem, p11-12.

1964

...":

"

3

":

"

1963

1955

" "

:(.). 217

.208

1463 %10 2118 13 224
218 %1

219

220

1959

1960

221

:

1959

1959

222

- .103 - .105 :(1975). 218
() . 8 :(.) . 219
.7 :(1978). 220
1997 - 1910 .7 :(1998). 221
.102-101 .102 . 222

1948

1967 1948

223

224

223

224

:

5. الفصل الخامس: نظرة على التعليم الأهلي والتعليم الأونروا.

5.1

5.1.1

5.1.2

5.1.3

:

5.1

/

:

.

1948

.

" "

.

:

.

:
225

:
226

- " 1959/1958 227
" :

"
228

3 7
229

33 1955 20 225

) : 226
(.) :(

:() : 227
.67/03 3/14

) : 228
.61/05 58/01 44/1

.24172/83/82/10 1958-10-21 :(
.61/09 57/05 .(44) 57/1/10/
: 229

30

230

.1964

20

1966

11

231

32

232

15

1965/1964

²³³1961/1960

²³⁴

8

305

1961/1960

²³⁵

50

.- -

:(2010)

230

:(2011) 1966

231

232

233

1967-1948

234

235

.1955

1966

.²³⁶1958

.²³⁷

1950

.²³⁸

()

.²³⁹ 1978

1967

1966

:(2010)

236

)

237

:(

.67/10 66/09

(45/3) 61/4

.2/32/21-52

.1966-9-21

2

.1950-2-3

7194-272

34

238

1948

239

."

" : (1986).

.65-62

5.1.1

:

.

:

:

.

.

:

.

:

•

1948

9

.240

... "

:(1985).

240

.11-7

... 241

...

"

30

125

70

.243

- -

. 242

:

"

"

. 244

241

-
.229

:(1990). :

.8-7 1950/1949

242

.9 1950/1949

243

.(1994-1916)

:(1994)

244

.2

245

:

246

1961

²⁴⁸1964/1963

247

300

480

1964/1963

249

251

250

:

8

1964/1963

3

252

5

253

:

254

.13 1950/1949

245

.11 1950/1949

246

.3

(1994)

247

.8-7 1964/1963

248

.7 1964/1963

249

250

251

1959

1948

:(2009)

.1 1964/1963

252

253

.13 1950/1949

254

:

255

256

983

257

800

1967

9516

120

8912

30156 :

258

30

4895

:

•

1968

259

80-60

260

:

1999-1949

:(1999).

255

.27 -1

.12-11 1950/1949

256

. 1950 1

257

.(1999).

258

:(2009) 1968

259

260

()

)

261 (

262

266 265 264 263

267

268

269

270

.9-6 ":(1985) 261

262

263

264

.1948 265

266

.1967 / 267

268

269

270

1955-9-22) : (

(88/29) 49/154/ 1955-9-24

.56-03 55/09

.7 0 ":(1985) 268

.1956-8-23 (572) 269

() : 270

.67/05 67/03 (11/14) 26/1/4

1949

271

²⁷²1953

22

.1953

.1964

.1956

273

277

276

275

274

1959

280

279

278

:()

1965-3-25

:

271

1964

.67/05 67/03

(11/14) 26/1/4

:()

.67/05 67/03

(11/14) 26/1/4

.1962-2-17

:

272

273

274

275

276

277

278

279

280

:()

.67/05 67/03

(11/14) 26/1/4

1962-2-17

:

				1956		
				6-3		
		40-30				281
	282		100-80			1964
					284	283
1965			285	918		1964
287		555.5		286		1005
:						
<hr/>						
:()		:		281
	1965-3-25			1964		
				.67/05 67/03	(11/14) 26/1/4	
						282
:()		:		283
		1964	31			
.67/05 67/03	(11/14) 26/1/4	1964	31			1
:()		:		284
		1965	31			
.67/05 67/03	(11/14) 26/1/4	.1965	31			1
:()		:		285
		1964	31			
:()		:		286
		1965	31			
:()		:		287
	1966-12-31					

1951

3

25

288

()

289

290

1968

:

291

292

.6

-

:()

288

.6

.()

289

:(2009)

290

.1948

291

.32

.()

292

1948

4

:

:

:



1929

293

1992

.1968

1950

.²⁹⁵ 1967

.²⁹⁴

1956

:

.²⁹⁶

:



.55-51

."

":(1985).

293

.53 .

294

.53 .

295

:(

)

:

296

1955-10-19

.56-03 55/09

(88/29) 49/154/

1931

297

1945/1944

298

:

299

300

301

302

1951/1950

()

1963/1962

.1960/1959

³⁰³ "GSE"

1953/1952

1956/1955

.2 1941/1940

297

.1945/1944

298

299

.1950/1949

300

.1941/1940

301

.1953/1952 1952/1951

302

303

.(GCE)

1967 1950

2044)

(2686)

(
:

305

28

24

306 1959/1958

:

10 - 9

-

:

24

14-

.-

24

14

304

:(2009)

305

.54 .

.(1958) .

306

()

307 4

:- 1-5

12	345			
15	384			
6	239			308
11	424			

(2)

.39/1 1967/5 -1963/11

49

1963/1962

³⁰⁹1959/1958

.53

:(1961).

307

308

.53

.(1955).

309

51

310

15370

492

:

%140

.-

1-5

-

311

312

4

313

198

1953

.(1963/1962)

310

:(1975).

311

.79

.67

312

.34 (1967/1966)

313

:

1948

.

.1950

.

:

(2003) "Schultz"

.

.

:

(2000)

(2005)

:

.

:

:

.

:

:

.

1955

13

1948

-

-

1955

1964

:

1948

1964

1967 1962

1948

1957

1948

1948 :

1948

13

(1955)

1958

:

1964

.

.

:

.

.

:

:

.

.

.

.

.1

.2

.3

.4

						.1
		()		:
)		:			.1
.56-03	55/09	(88/29)	49/154/	.	(
()		:			.2
65/03	56/4	.	()		
						.67/05
)		:			.3
	.61/05	58/01	44/1	:(
)			:			.4
.67/05	67/03	(11/14)	26/1/4	.	(
)			:			.5
.1963/10-1962/08		(952/6)	21	.	(
)		-	:			.6
.66/11	57/08	(3/52)	58/4	:(
)		-	:			.7
.60/11	58/11	(4/13)	5/3/4	:(
)		:			.8
.63/03	61/09	(43/17)	23/3/4	.	(
)			:			.9
.61/09	57/05	.(44)	57/1/10/	.	(
			:			.10
50/4	:()			
		.66/6	63/5	(44/20)		
)		:				.11
.67/03	3/14	.(.)	.(
)		:				.12
.62/11	57/09	.17/4	.	(
)		:				.13
.65/10	62/02	26/3/4	:(

) : .14
. . (3/11) 70/4 .(

61/4 .2/32/21-52 .() : .15
.67/10 66/09 .(45/3)

) : .16
.59/6 (3/2) 13/3/4 .(

) : .17
.66/10 66/9 (3/21) 45/4 .(

-1963/11 (951/10) 39/1 .() : .18
.1967/5

1960/1959 : .19
.(43/22) 4/4 .()

:
. : .1
.(989/5) 42/1/33/ /

: .2
.(989/4) 5/72/ /

: .3
.(953/22) 1/51/ /

: .4
.(987/10) 36/1/33/ /

:
.1967/1966 1951/1950

.1941/1940

.1945/1944

.1950/1949

.1952/1951

.1953/1952

:

.1950/1949

.1964/1963

:

.1967 1949

:

:()

.

:

.1950-3-13 4568

:

.31/22/3 3/1/2/35

- .2 .1950-2-1 .7192-270 34

.

- .2 .1950-2-3 7194-272 34

.

:

:(1962) .1

	:(2005).	.2
.1948-1917	:(2004).	.3
	:(1998).	.4
	1997 - 1910	
1921	:(2005).	.5
	.2003	
:(2011) 1966		.1
:(2010)		.2
:(2008)		.3
:(2008)		.4
:(2010)		.5
:(2011)		.6
:(2009)		.7
(2009)		.8
:(2010)		.9
:(2010)		.10

	:(2009)	.11
	:(2010)	.12
	:(2010)	.13
	:(2009)	.14
	1948	
	:(2009) 1968	.15
	:(2010)	.16
	.(1954/1953)	.1
	.(1963/1962)	.2
	.(1967/1966)	.3
	.1955-1954	.1
	.1956-1955	.2
	.1966	.3
18	:(1963) .	.1
	7	1961

		:(2004).	.1
		:(200).	.2
	(http://www.kabuljebain.com/TheBookOfMyLifeStroy.htm 1-11-2010)		
	:	:(1993) .	.3
:		1949 – 1916	
	(http://www.palestineremembered.com/ar/Palestinian-Struggle.html 2010-10-28)		
		:(.).	.4
1967-1948	–	:(1979).	.5
		:(1999).	.6
		1999-1949	
		:(1978).	.7
		:(1989).	.8
		1989-1921	
(1994-1916)		:(1994)	.9
	–	:(2006).	.10
		:(.).	.11
	1948-1918	–	
		:(.).	.12
		:(2004).	.13
	:	PASSIA	
	(http://www.passia.org/meetings/2004/Ibrahim-Abu-Salem-2004.htm 2010-10-29)		

		:(2005).	
)	:(.).	.14
		.(
		:(2000).	.15
		:(1956).	.16
		6 .	
		:(1958).	
	:(1986 / 1406)	.	
		:(2003).	.17
103	-	:(1975).	.18
		-(
		:(2006).()	.19
	" "	:(1996)	.20
		:(2007).	.21
		:(2004).	.22
		:(2001).	.23

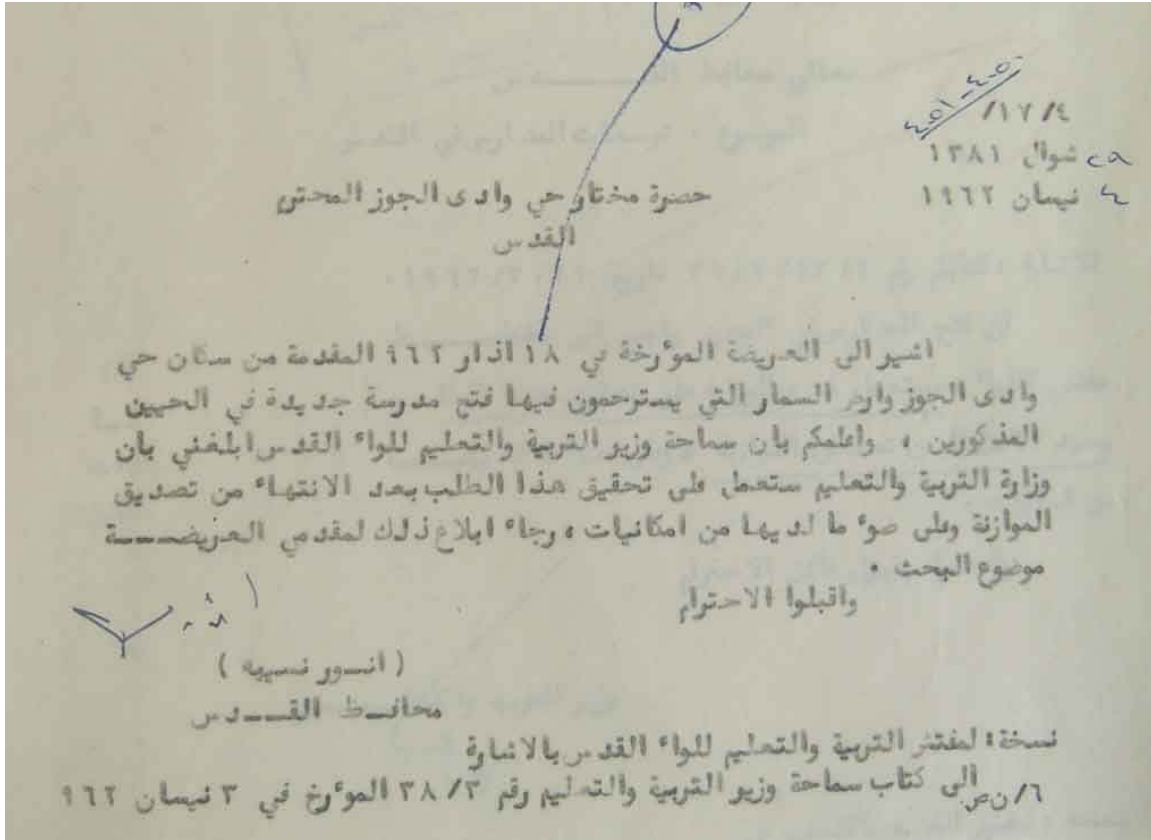
1. Abu Odeh, A.(1999): Jordanians, Palestinians, and the Hashemite Kingdom in the Middle East Peace Process, 1st edition, United States Institute of Peace, United States.
2. Be'eri, E.(1978): The Palestinians Under Jordanian Rule, The Hebrew University, Harry S.Truman Research Institute, Jerusalem.
3. Katz, K. (1999): Jordanian Jerusalem: Postage Stamps and Identity Construction, Institute of Jerusalem Studies, Jerusalem.

4. Ricks Thomas.(2009): Khalil Totah: The Unknown Years. Jerusalem Quarterly, Issue 34.
5. Tibawi, A.(1956) Arab Education In Mandatory Palestine, Luzac.
6. Weckowicz, Thaddus E.(2000): Ludwig von Bertalanffy (1901-1972): A Pioneer of General Systems Theory, University of Alberta Center for Systems Research, Czech Republic.

1967 – 1831	:(2010).	.1
-	:(2009)	.2
.	:(1990).	.3
.	.1958-1948	
.	:(1985)	.4
.	" : (1985)	.5
.	" : (1985)	.6
.	:(1990).	.7
.	.1990	
.	:(1990).	.8
.	:(1990).	.9
.	.1990	
() 12-9 " "	:(1995) .	.10
.	. 1995 . 1994	
.	:	.11
(http://www.arabbab.com/?p=40349 , 2010-11-1)		
.	" : (1986).	.12

1. <http://www.arabbab.com>.
2. <http://www.kabuljebain.com>.
3. <http://www.lob.gov.jo>.
4. <http://www.unesco.org/new/ar/unesco>.
5. <http://www.passia.org>.
6. <http://www.wafainfo.ps>.

.451-450/17/4



)

:

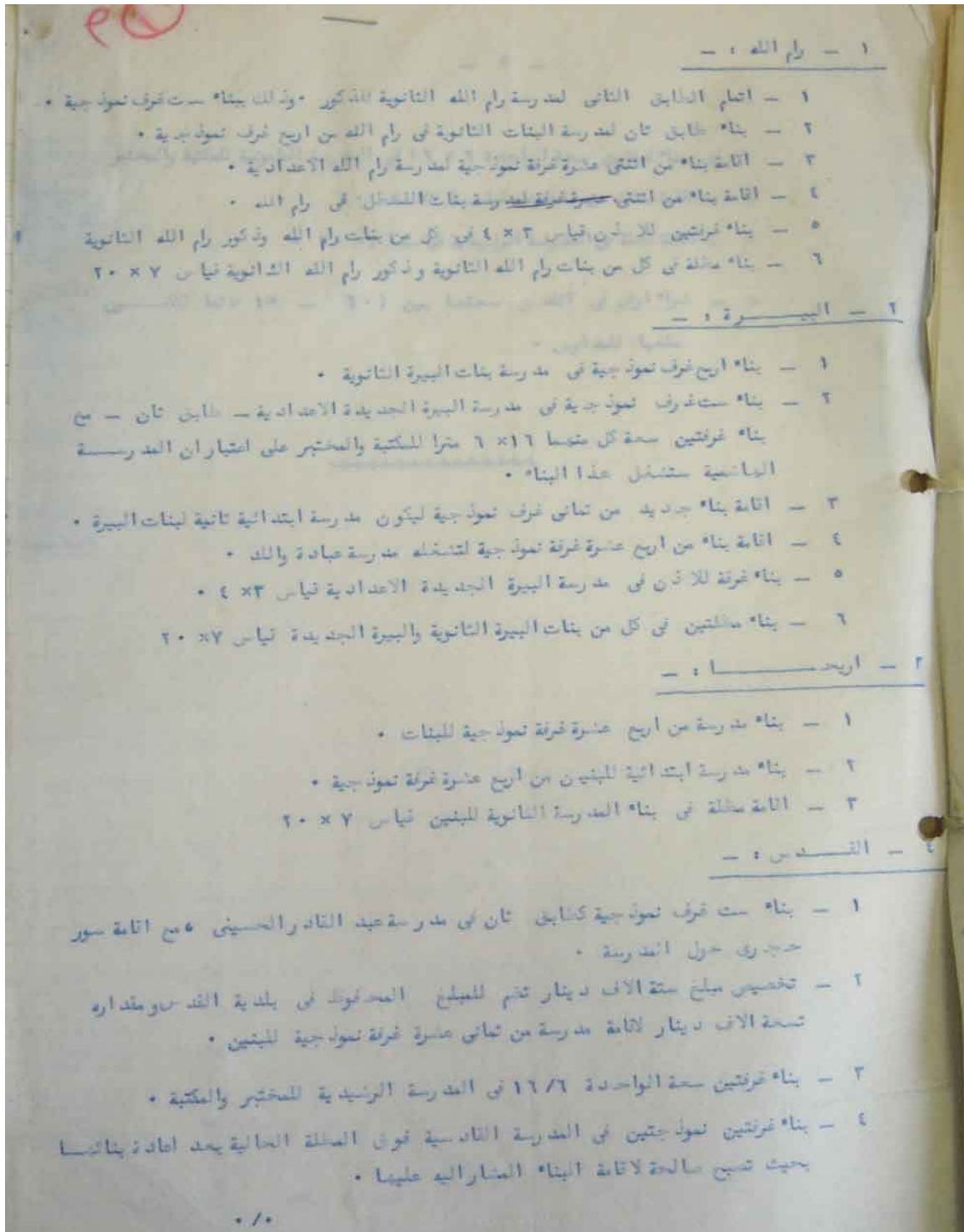
:

.11/62

09/57

.4/17

.(



- ٥ - بناء غرفتين سعة الواحدة 6×16 في المدرسة الماسونية للمكتبة والمختبر
- ٦ - اقامة صالة في الماسونية تياسا 20×27
- ٧ - اقامة صالة في المدرسة الرشيدية تياسا 20×27
- ٨ - شراء ارض في القدس مساحتها بين (10 - 15 دنما لتكون ملحقا للمدارس

) 1959/1960 :
(5) 68 / 83 / 2 :(
.25-3-1959 .(22/43) 4/4

.1960-4-18

مكتب مفتش التربية والتعليم للواء القدس

القدس

الرقم ٢٠٣٤١ / ٦٤ / ٣٥

التاريخ ٦٠ / ٤ / ١٨

مكتب محافظ القدس

التاريخ ١٤١٥

الرقم ٢٠١٤

مدير الكلية الانطونية القبطية

المبحث - الطالب حسنى على ناصر

الاشارة - كتابكم فى ١٩٦٠ / ٤ / ٤

قرر سماحة وزير التربية والتعليم طرد الطالب
المذكور اعلاه من مدرستكم طردا باتا لدخوله المدرسة بشهادة
مزورة .

عبد الحليم الخطيب

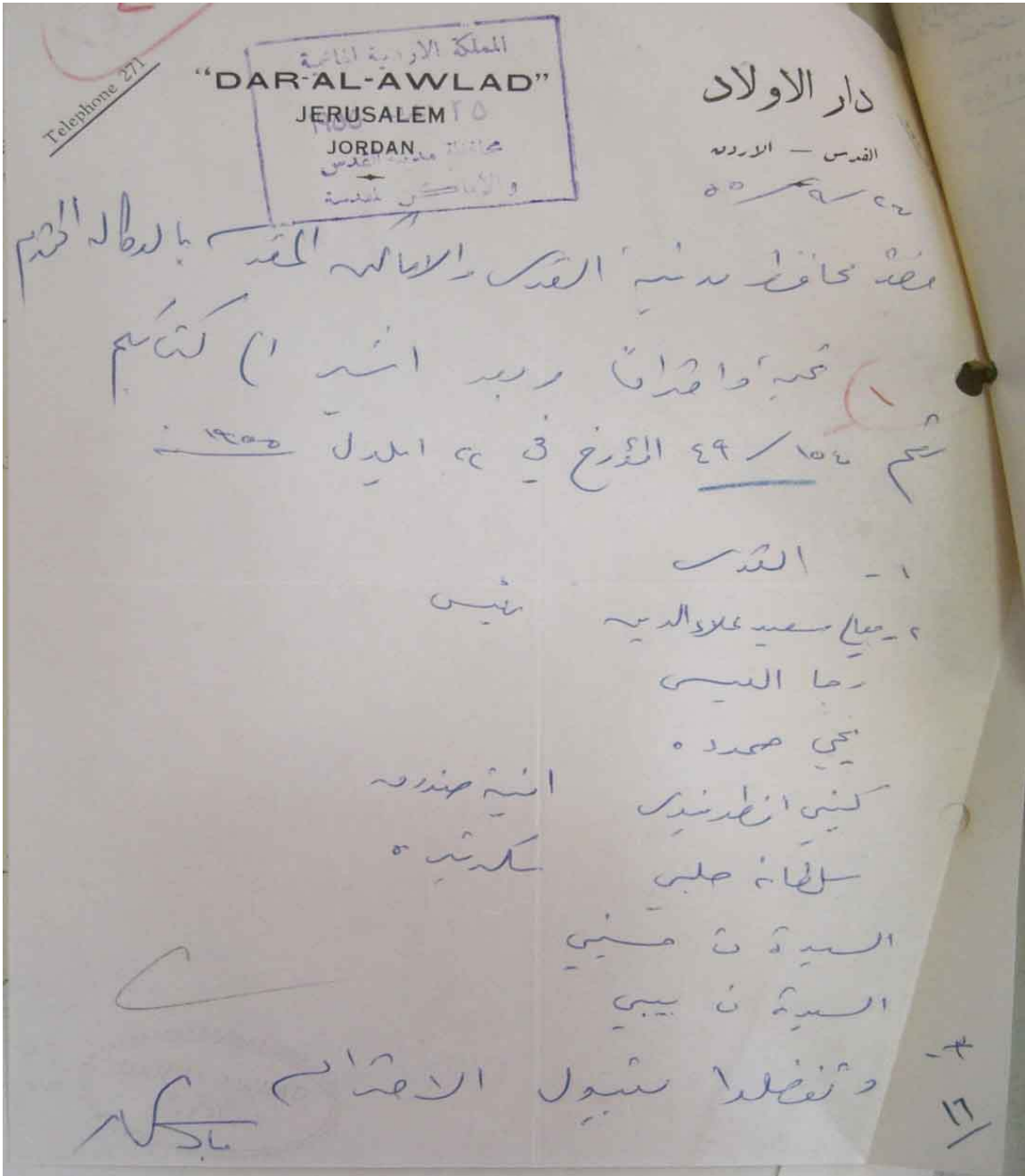
مفتش التربية والتعليم للواء

نسخة - الى عطوفة محافظ القدس المحترم

- الى ملف المدرسة

) - : :

.61/05 58/01 44/1 :(



) : :
 .56/03 09/55 (29/88) 154/49/ :(

1968

:5



.2008 .The Davidson Center :

			314			
-	-		-		315	1
-			-		316	2
-			-		317	3
-			-		318	4
-	-		-		319	5
400			-		320	6

314

1965-1966 315

.1966 : .1960/1959

(27) (678) 1967/1966 .29-27

:

.67/03 3/14 .(.) .()

(24) (1152) 1967/1966 316

) :

.67/03 3/14 .(.) .()

: (10) (478) 1967/1966 317

) :

.67/03 3/14 .(.) .()

17 318

(19) (929) 1967/1966 319

:

3/14 .(.) .()

.67/03 320

.1955/1954

: (16) (640) 1967/1966

3/14 .(.) .()

.67/03

			314			
-	-		1957		321	7
-	-		1957		322	8
240			1961		323	9
400			1950		324	10
150			1958		325	11
-	-		1958		326	12

321

(11) (325) 1967/1966

)

.67/03 3/14 .(.) .(

322

(9) (410) 1967/1966

3/14 .(.) .()

.67/03

(12) (571) 1967/1966

323

12

324

(6) (306) 1967/1966

.67/03 3/14 .(.) .()

(20) (616) 1967/1966

325

)

.67/03 3/14 .(.) .(

" " (1958)

326

) (1991) . 1963

" " " "

(

" "

			314			
-			1965		327	13
			1967			14

: (2004) . : .
 : . PASSIA .
<http://www.passia.org/meetings/2004/Ibrahim-Abu-Salem-2004.htm> . 2010-10-29
 . (1965) 327
 : .) (12) (433) 1967/1966
 : .)
 .67/03 3/14 . (.) . (

:3-5 :7

		328			

.43 1954/1953 :

80 1961 328
:() : .1965-10-1
(44/20) 50/4 :(.)
.66/6 63/5

			1
			2
			3
		329	4
			5
		330	6
			7
		331	8
		332	9
		333	10
			11
-	-		12

.2 .1950-2-1 .7192-270 34 : (10) (222) 329

.(1918) 330

.1950-2-1 .7192-270 34 : .1950 10 222 .2

1951 331

1966

:() .() .()) :

.67/03 3/14

332

:(2011)

333

	-	334	13
		335	14
		336	15
			16
		337	17
		338	18
		339	19

1957

334

) : : . 1960

.63/03 61/09 (43/17) 23/3/4 .(

1964—9-29

335

: .1964-4 1964-3-15

.1964-9-29

:(987/10) 36/1/33/ /

1906

336

1940

.2010-11-1

<http://www.arabbab.com/?p=40349> .

1916

337

14 1958

1964/1963

: .1966

338

339

: : .1967

. . (3/11) 70/4 .()

9: جدول 5-5:

		/	/	/	/	/	/	/	/	/	/	
												49/48
12	470	-	-	-	10/1	73/2	98/2	78/2	31/1	90/2	60/2	50/49
10	371	-	-	38/1	55/2	47/2	84/2	69/2	78/2	-	-	51/50
9	370	-	-	-	71/2	125/3	55/1	77/2	42/1	-	-	52/51
11	503	-	38/1	91/2	124/3	102/2	-	-	98/2	50/1	-	53/52
12	568	62/2	142/3	47/1	103/2	99/2	-	-	-	63/1	52/1	54/53
16	789	94/2	89/2	93/2	103/2	157/3	-	-	-	144/3	109/2	55/54
15	619	62/2	222/5	77/2	120/3	138/3	-	-	-	-	-	56/55
13	695	201/4	229/4	98/2	111/2	56/1	-	-	-	-	-	57/56
20	707	-	-	-	237/5	265/5	105/2	100/2	-	-	-	58/57
16	646	263/6	300/7	83/2	-	-	-	-	-	-	-	59/58
13	553	-	-	-	262/6	291/7	-	-	-	-	-	60/59
14	541	-	-	-	305/8	236/6	-	-	-	-	-	61/60
19	815	-	-	243/6	263/6	309/7	-	-	-	-	-	62/61
20	830	-	-	189/5	269/7	345/8	-	-	-	-	-	63/62
19	739	-	-	182/5	306/8	251/6	-	-	-	-	-	64/63
18	718	-	-	229/6	305/8	184/4	-	-	-	-	-	65/64
18	750	-	-	-	287/6	294/8	169/4	-	-	-	-	66/65
17	668	-	-	-	265/7	276/7	127/3	-	-	-	-	67/66

:

94.....	33, 46
58, 68, 71, 72, 83, 125,	58, 68, 125
126	54.....
32.....	36, 82
32, 41, 46, 77	53, 85, 127
91.....	24.....
33.....	58, 68, 125
24, 47, 54, 55, 56, 58,	57, 58, 68, 72, 83, 125 ..
59, 70, 71, 72, 81, 83, 88,	58, 68, 125
89, 90, 93, 116, 122, 123,	36, 82, 87, 126
124, 125, 126, 127, 128	122
84, 93	1, 2, 3, 4, 13, 14, 15, 16,
15, 24, 32, 33, 40, 42, 69,	17, 18, 19, 23, 24, 26, 33,
71, 74, 75, 76, 93, 96	35, 39, 40, 41, 42, 45, 46,
119.....	47, 48, 49, 50, 51, 52, 53,
87.....	54, 55, 56, 57, 58, 59, 61,
90.....	62, 63, 66, 67, 68, 69, 70,
122.....	71, 72, 73, 76, 77, 81, 82,
23, 33	83, 84, 85, 87, 88, 89, 90,
36, 46	91, 93, 94, 95, 96, 106, 116,
57, 58	118, 120, 122, 123, 124,
ii.....	125, 126, 127, 128
15, 47, 69, 70	36, 84, 93, 94, 95,
15, 24, 71.....	126
19.....	

19, 20, 23, 24, 46,	88	16.....	
36, 81, 94, 126		41	
46, 47, 77, 82, 86, 122 .		77, 86	
118, 122.....		93.....	
17, 47, 77, 82		58, 68, 69, 70, 71, 72,	
46.....		73, 83, 126	
46.....		33, 35	
46, 47		14, 19, 20, 23, 24, 27, 37,	
36, 126		69, 70, 71, 73, 75, 76, 94,	97
ii.....		14..... " Tadman	
87.....		17, 32, 41, 47	
24, 30, 32,		17	
33, 34, 35, 36, 39, 42, 47,		1, 2, 4	
50, 51, 52, 53, 54, 55, 56,		70, 71	
57, 58, 59, 60, 62, 63, 64,		19.....	
65, 66, 67, 68, 69, 70, 71,		69.....	
72, 73, 76, 81, 83, 88, 89,		69.....	
90, 93, 97, 116, 122, 123,		70.....	
124, 125, 126, 127, 128		87.....	
85.....		87.....	
86, 89, 91.....		87.....	
89, 91 فهرس الاعلام		41	
89.....		41	
86, 89, 91.....			
91.....		22	
86.....		70.....	
55, 70, 86, 116		38..... "John Davies	

91.....		19.....
68, 72.....		89, 91.....
41.....		93.....
41.....		88.....
93.....		88.....
32.....		57, 58, 68, 72, 125.....
23.....		91.....
24.....		86.....
122, 123.....		89.....
35, 58, 59, 60,		24.....
	84	58, 68, 96, 125.....
47.....))		71.....
36, 84, 85, 86, 87,		58, 68, 125.....
	88, 89, 90, 126	14, 18, 19, 23, 47,
36, 84, 128.....		53, 58, 95, 96
47.....		18.....
19, 20, 46.....		41.....
94.....		41.....
41.....		41.....
19, 23, 33, 35..... -		41.....
89.....		41.....
88.....		41.....
88.....		94.....
54, 55, 70, 71, 87 ..		89.....
54, 70.....		41.....
36, 89, 90, 91, 95,		86.....
	128	15, 19, 20, 21, 32, 33, 35,
		41, 42, 46, 47, 83, 122

58, 68, 72.....
 22, 32
 90.....
 16.....
 1, 2, 4, 14, 15, 16, 17,
 19, 20, 21, 22, 23, 24, 32,
 34, 37, 42, 58, 60, 69, 74,
 75, 76, 83, 85, 123, 126,
 128
 89, 90
 93.....
 46, 127
 82.....
 47.....
 46.....
 19.....
 88.....
 24, 87
 93.....
 41.....
 86.....
 46.....
 94.....
 82.....
 81.....
 56.....

54, 56,
 123
 19.....
 56.....
 84, 87, 88, 95
 46.....
 57..
 54, 56, 123
 46.....
 93.....
 14, 16, 24.....
 19, 23
 86.....
 118
 93.....
 86.....
 46.....
 23, 33
 91
 91
 86.....
 89.....
 93.....
 23.....
 22
 " Humphrey Bowman
 14.....

84, 86, 89.....

85

88.....

55, 124

93.....

93.....

91

86.....

54.....

88.....

	:	
18.1945		:-10-1
.		:-1-4
50		
		:-2-4
50		
.		:-3-4
51		
53		:-4-4
57		:-5-4
59		:-6-4
62 ...		:-7-4
1963/1962		:-8-4
63	1967/1966	
66		:-9-4
		:-10-4
67		
67		:-11-4
68		:-12-4
		:-13-4
70		
72		:-14-4
96		:-1- 5
	:-25	: 7
122.....		
125.....	:-35	: 8
126.....	:-45	: 9
129.....	:-55	: 10

:

40

:-12

	:	
4		: 1
116.....451-450/17/4	1962	
1960/1959		: 2
117.....		
		: 3
119.....1960-4-18		
		: 4
120.....		
	1968	: 5
121.....		
		: -25
122.....		
125.....		: -35
126.....		: -45
129.....		: 10

ii		
iv		
vi	(Abstract)	
1	:	1
2		1.1
3		1.2
4		1.3
5		1.4
8		1.5
13	: - :	2
14	.	2.1
22	.	2.2
25		
26	.	3
27	.	3.1
32	.	3.2
35	.	3.3
39	.	3.4
42	.	3.5
44		
45	.	4
46	.	4.1
49	.	4.2
52	.	4.2.1
61	.	4.2.2
65	.	4.2.3

69		4.2.4
74		4.2.5
78		
79	:	5
80		5.1
84		5.1.1
93		5.1.2
96		5.1.3
99		
100		
106		
107		
107		
108	:	
108	:	
109	:	
109	:	
109	:	
109	:	
109	:	
109	:	
109	:	
109	:	
110		
111		
111		
111		
111		
111		
112		
112		
113		
114		

115		
116		
130		
135		
136		
137		
138		